



YCI WATER INTAKE

WATER INTAKE STRUCTURE PROJECT

Project Name	YCI Water Intake Structure Project
Client	Bomac
Location	New Orleans, Louisiana, USA
Product	LSAW Pipes
Total Tonnage	2843 MT
Year	2017-2019

ESC SCOPE OF SUPPLY

LSAW PIPES

ESC Steel has been awarded to supply Bo-Mac Contractors with Ø48" variable thickness pipe piles for the YCI Methanol One Plant located in St. James, Louisiana.

The pipe was produced strictly in accordance with the Standard: API 5L-2012 and ASTM A252-2010, with Steel Grade API 5L PSL1 X60.

Pipe specification:

OD: 1.219m (48in), 0.762m(30in), 0.409m(16.14in), 2.133m (84in) and 1.372m(54in).

Thickness: 19.05mm(0.75in), 25.40mm(1.0in) & 38.10mm (1.5in), 15.88mm (0.625in), 9.53mm(.375in), 31.75mm(1.25in) and 50.8mm(2in).

Lengths: 39.93m (131ft), 40.38m (132.5ft), 39.47m (129.5ft), 44.81m (147ft), 35.35m (116ft), 40.08m (131.5ft), 45.72m (150ft), 46.33m (152ft), 44.19m (145ft), 45.42m (149ft) and 36.57m (120ft).

The pipes were used for a water intake structure as a stormwater and wastewater discharge line. The pipes were delivered to the Port of New Orleans, Louisiana early April and the job was completed 2019.



Aerial view of the project.

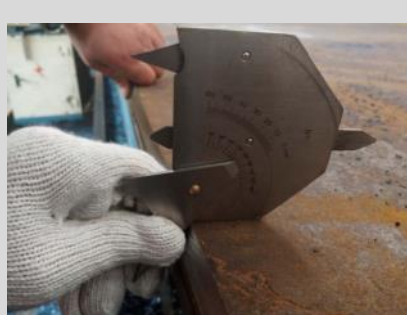
RAW MATERIAL INSPECTION



CHECKING THICKNESS OF PLATES



STEEL PLATE DIMENSION INSPECTION



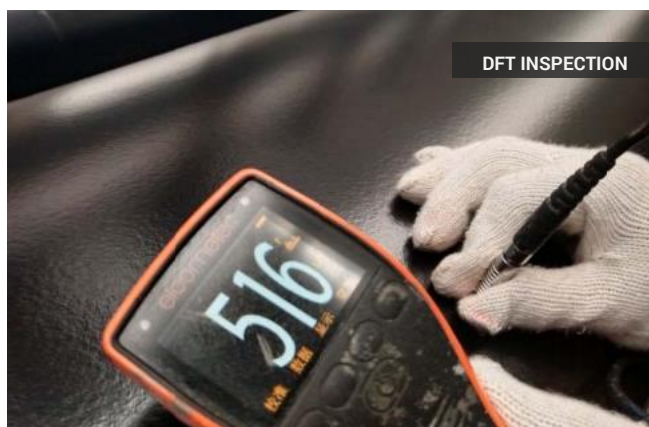
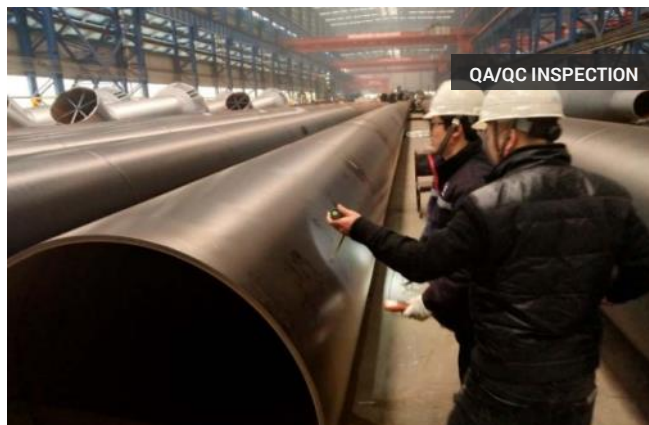
PRODUCTION & INSPECTION



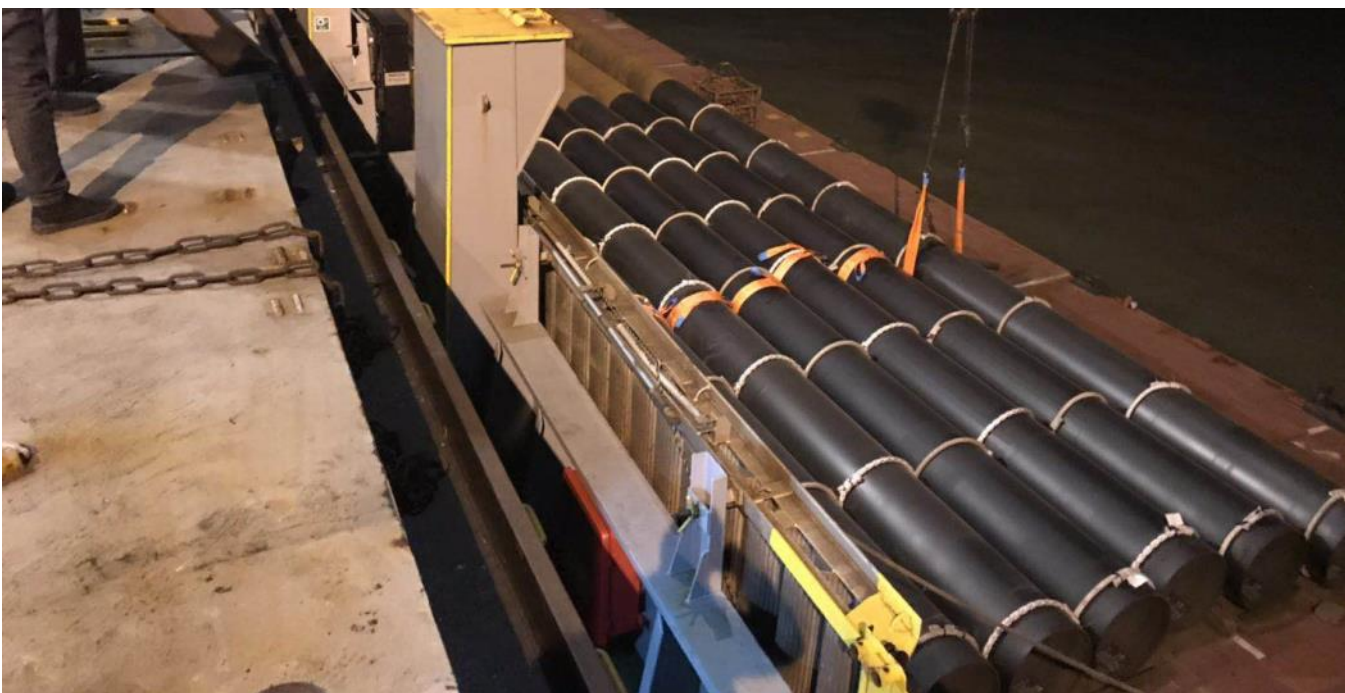
PIPE FORMING



BLASTING & PAINTING



LOADING & DELIVERY



INSTALLATION ON SITE

