

BUNGE GRAIN TERMINAL, USA

MONOPILE PROJECT

Owner	Bunge Grain Terminal, Louisiana
Consultant	River Consulting
Contractor	Kiewit Infrastructure South Co.
Location	Louisiana, United States of America
Delivery Date	Nov 2014
Total Tonnage	2,213 MT

ESC SCOPE OF SUPPLY

LSAW PIPE

ESC was awarded the job to supply painted LSAW pile for Bunge North America Project. The product includes steel pipe in various sizes up to OD2438mm, thickness 63.5mm, and length 49m. All steel pipes with steel grade of ASTM A252 Gr.2 and are manufactured in accordance with API Spec. 2B.



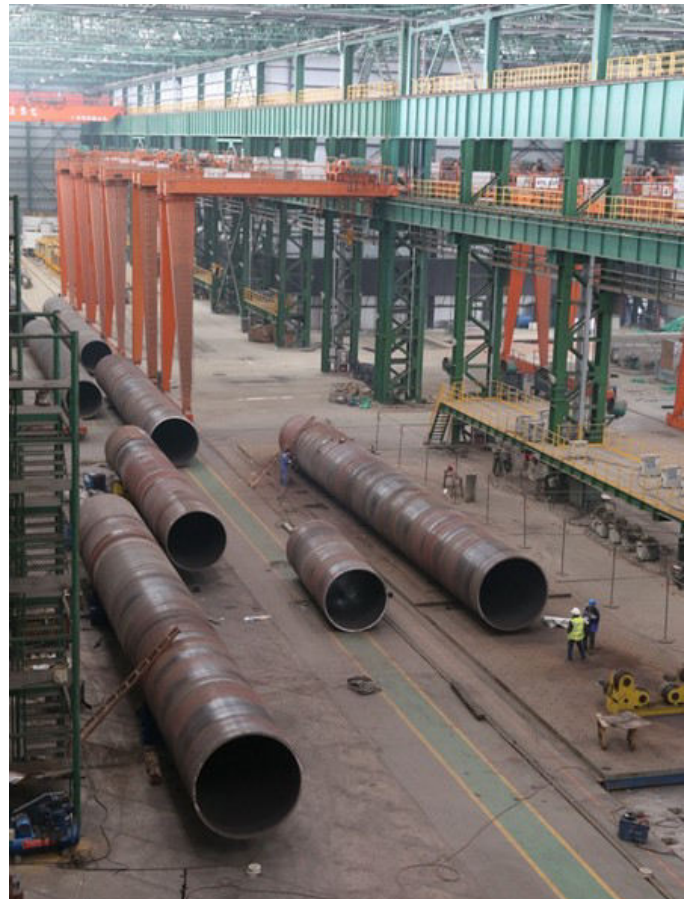
Opening meeting with client representatives.

MONOPILE ROLLING PROCESS



PILE FORMING PROCESS

Preheat of weld to 110°C
in accordance with AWS D1.1



AUDIT & INSPECTION

The project processes and products were audited by AWS D1 committee member - James K Merrill and Chairman of ASNT Certification Management Council Level III Division - John Kinsey.



The project is fully monitored and inspected by Third Party Company (Caltrop) from incoming raw material to ship loading process.



BLASTING & PAINTING



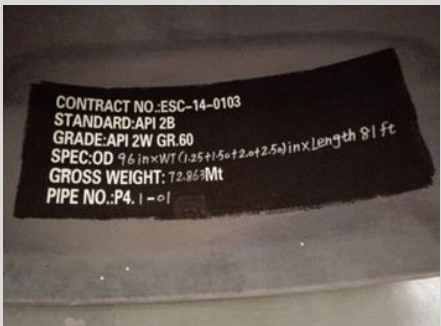
MONOPILE BLASTING PROCESS



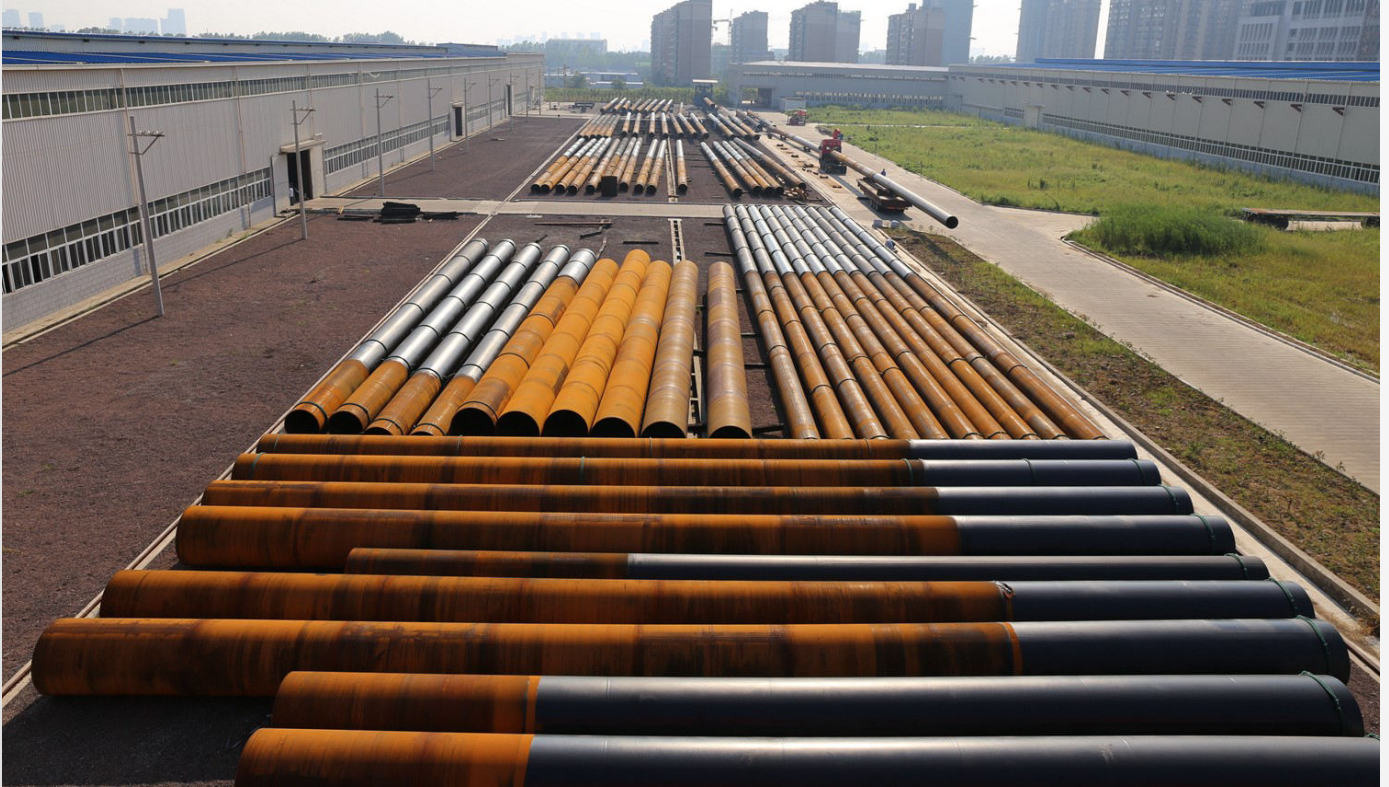
NORMAL PILE BLASTING PROCESS



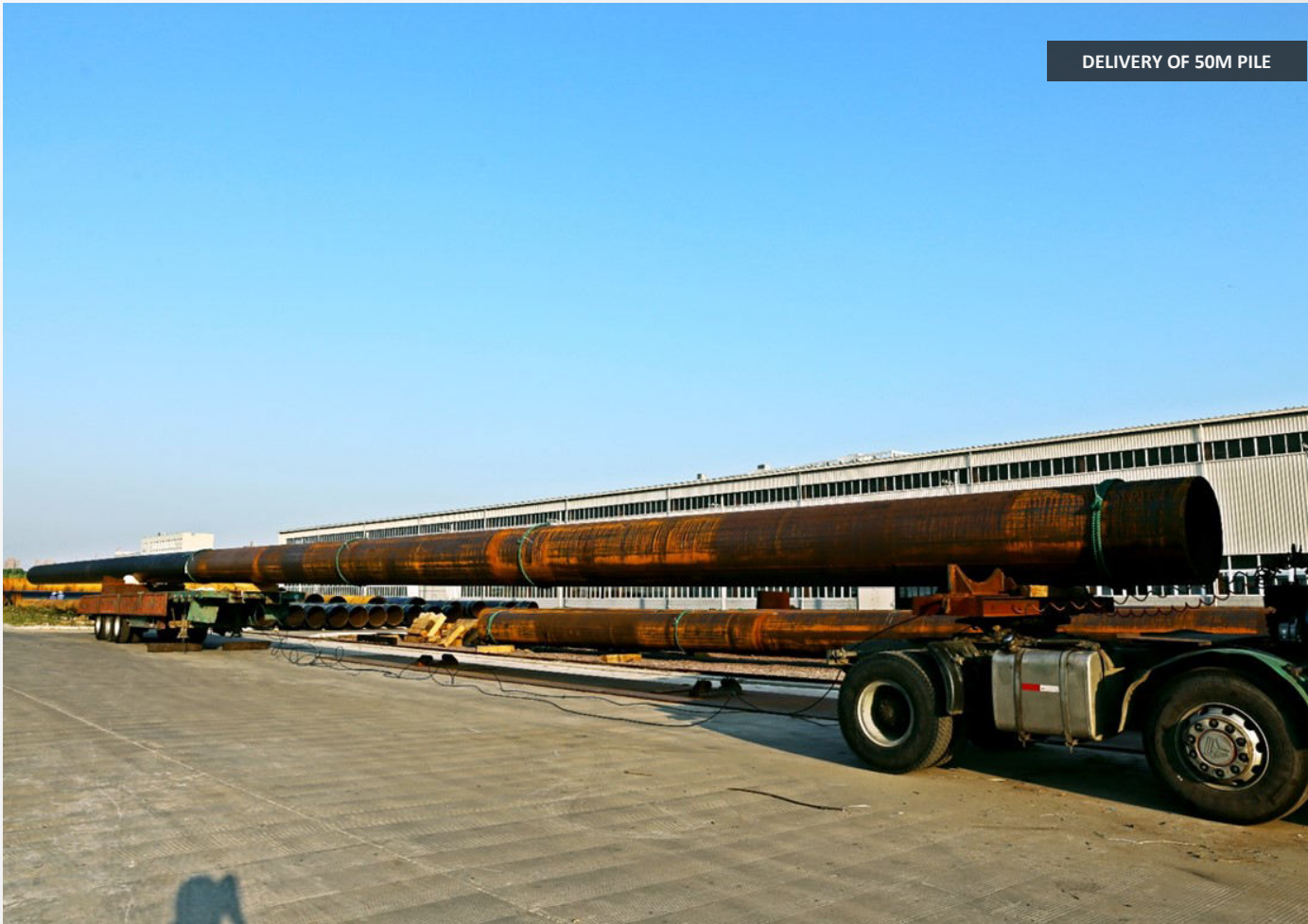
AUTOMATIC PAINTING TO REPLACE THE MANUAL PAINTING PROCESS PRODUCED VISUALLY CONSISTENT SURFACE AND PAINTING DFT WITH VERY SMALL VARIATION.



FINISHED PRODUCT



DELIVERY & SHIP LOADING



DELIVERY OF 50M PILE

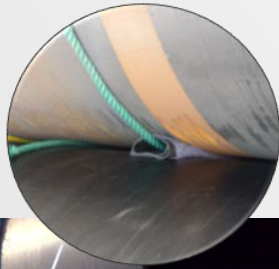
DELIVERY OF MONOPILE FROM FACTORY TO SHANGHAI PORT



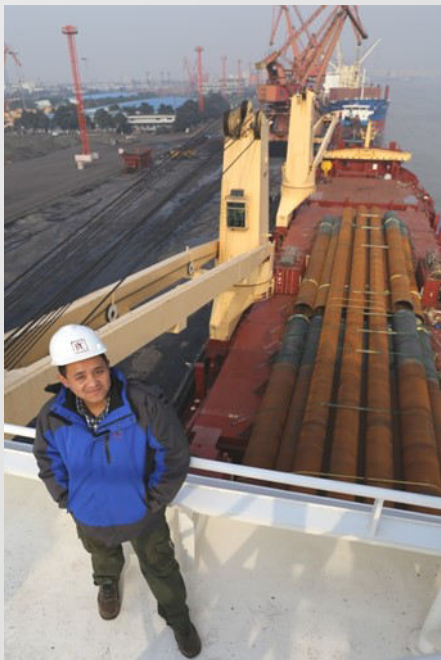
DELIVERY & SHIP LOADING

PROTECTION OF PIPE DURING SHIPMENT TO PREVENT DAMAGE

The pipe is protected to ensure that there is no direct contact of the pipe surface with other metallic (or hard) surfaces. The pipe is properly secured to ensure safety and prevent damage during the shipping process.



DELIVERY & SHIP LOADING



ON-SITE INSTALLATION

