

LIQUID BULK TERMINAL RUBIS

TANK PROTECTION PROJECT

Project Name

Liquid Bulk Terminal Rubis

Main Subcontractor

Geka Bouw B.V.

Location

Taiwan

Product

Sheet Piles

Total Tonnage

283 MT

Delivery Date

March 2009

INTRODUCTION

Europile BV in the Netherlands secured yet another Tank Protection Project, this time for the Rubis Tank Terminal in Rotterdam, Netherlands.

Legislation required that they needed to have an impervious fire proof barrier put in place around the oil tanks. They had to have a perimeter that would withstand the possible scenario of a massive failure of the tanks and all the contents flowing out into the surrounding area. In addition, this liquid could well be on fire at the time so the perimeter had to cater for this potential issue as well.

The ESC sheet piles with their wide profile made an ideal selection due to their very limited clutches per metre of wall. The sealing of the clutch is at least half that of other sheet piles and this also means less risk of seepage for the Contractor.

ESC SCOPE OF SUPPLY

SHEET PILES

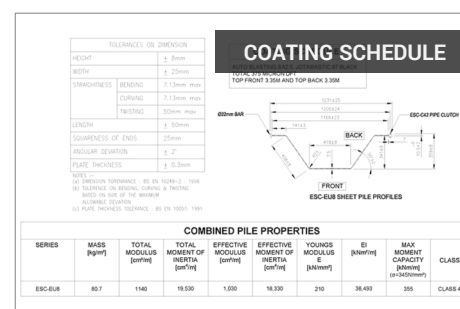
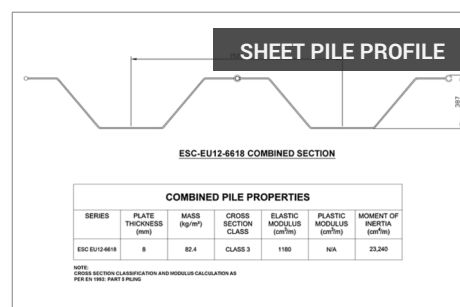
The Bill of Quantities included:

ESC-EU12 Steel Sheet Piles Grade Q345B in various lengths from 9.5m to 10.5m (252 tons)

ESC-EU8 Steel Sheet Piles Grade Q345B in various lengths from 5.7m to 7.7m (31 tons)

Calculations were carried out by ESC in order to ensure that the stringent requirements of the Client and the Contractor were met whilst at the same time the budget constraints needed to be adhered to.

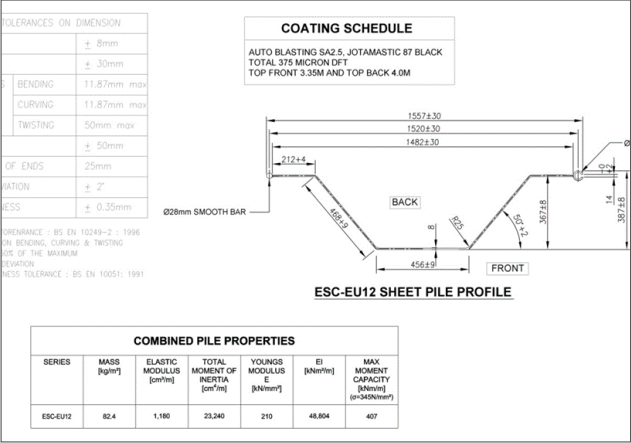
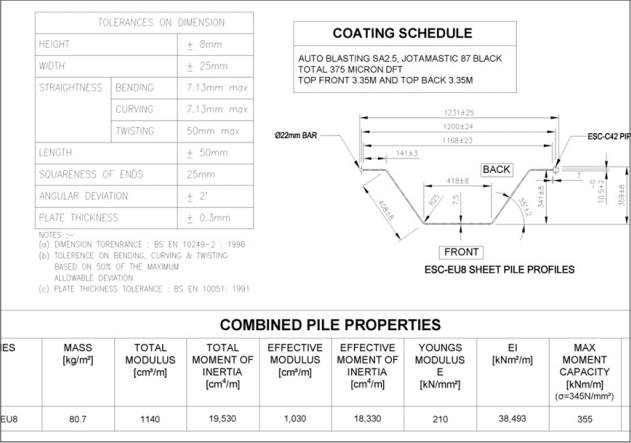
All EU12 sheet piles were painted on the top 3.35 metres on the front side and the top 4.0 metres on the back side with 375 microns of Jotamastic 87 black paint. The EU8 sheet piles were painted on the top 3.35 metres on the front side and the top 3.35 metres on the back side with 375 microns of Jotamastic 87 black paint All painting works were carried out in the ESC



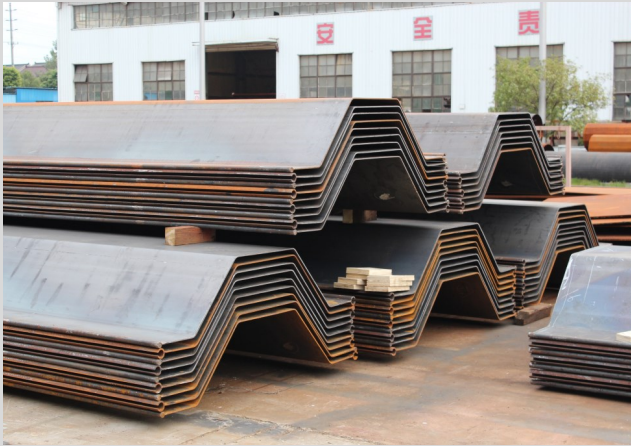
factory in China.

Extra clutches were sent along with the shipment to ensure that if any special corners were needed to be turned or obstacles caused a variation in the driving line then Geka Bouw BV was able to perform the onsite fabrication without any delays to the project timetable.

PROJECT DETAILS



PACKING & DELIVERY TO SITE



ON-SITE INSTALLATION



CONCRETE FOUNDATIONS



PROJECT COMPLETED

