



MELAKA RIVER BEAUTIFICATION

BEAUTIFICATION WORKS PROJECT

Project Name	Melaka River Beautification
Main Subcontractor	Pesona Metro Sdn Bhd
Consultant	SMHB of Malaysia
Location	Melaka, Malaysia
Product	Sheet Piles
Total Tonnage	3,000 MT
Delivery Date	2005

INTRODUCTION

Melaka is a very popular destination for Malaysian and foreign tourists alike. The history and beauty of the city was legendary. However, over the years there had been unauthorised building and unwanted dumping of waste into the Melaka River from residents and industries alike. The Government could not advertise and utilise the river as part of its promotion anymore.

It was decided to clean up the river and allow larger tourist boats to venture up the river as well as providing

pedestrians with an unhindered walking access along the river's edge for more than 5km from the river mouth. This also ran hand in hand with a major clean up of the waste that was being dumped in the river and an education programme for the citizens and local industry. They knew it was no good making a new development if old habits turned it back into an eyesore and health risk and people didn't want to use it.

ESC SCOPE OF SUPPLY

SHEET PILES

In 2005 Pesona Metro Sdn Bhd came to ESC asking for assistance in the designing, manufacturing and installation for a bold new plan to clean up the Melaka River and make it more conducive to tourists and local residents alike. The designs and the long term goal had to take into consideration a 50 year design life and the fact that the new sewage lines that were going hand in hand with the beautification could be accommodated within the scope of the structure if necessary. Piles were galvanised in some sections and painted in others according to the requirements.

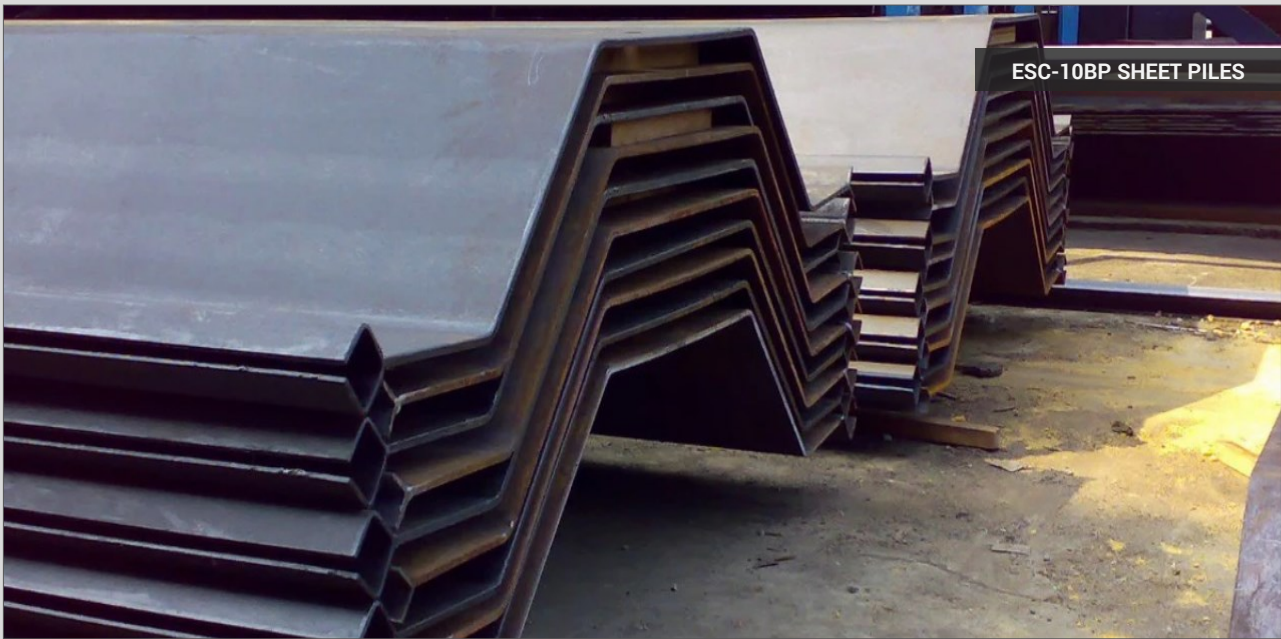
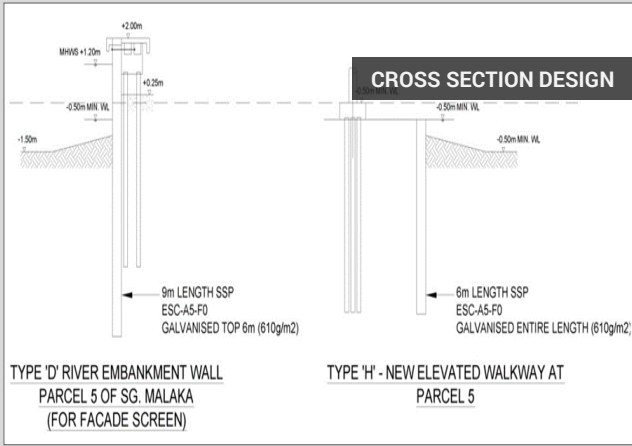
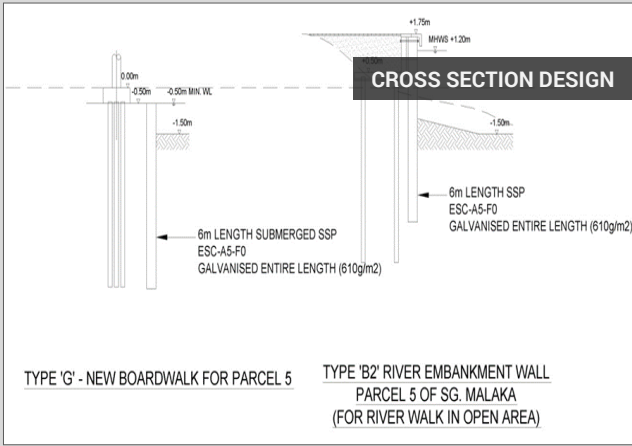
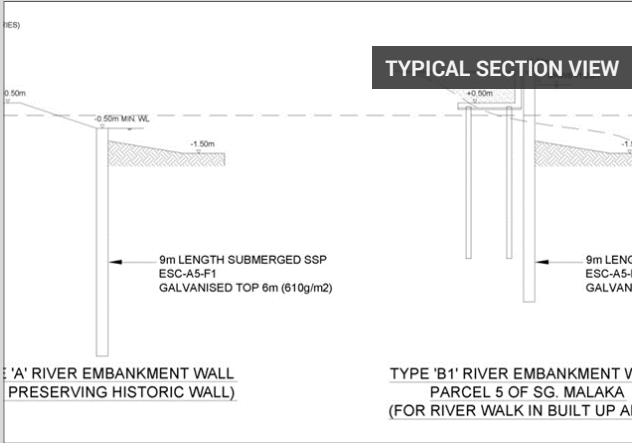
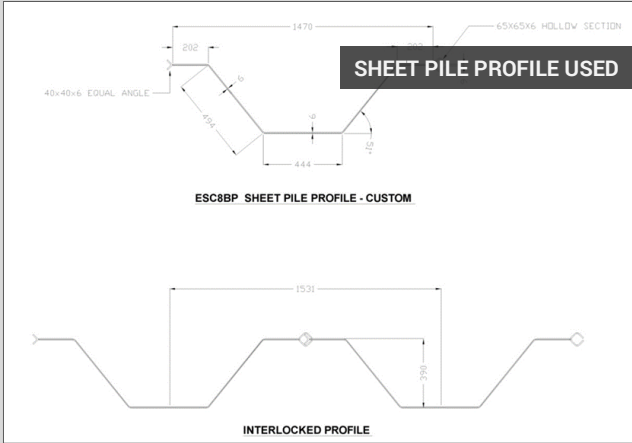
The Government of Melaka awarded the very prestigious project to Pesona Metro Sdn Bhd based on their combined experience and particular expertise that they brought to the table with ESC

and Consultants SMHB of Malaysia. All parties worked very closely together for a period of more than 4 years from design stage right through to the implementation and completion stage. Sheet pile profiles varied from section to section along the many stages of the project.

The sheet pile was designed strictly as an aesthetic river frontage in most of the sections as the walkways were predominately supported by reinforced concrete piles thus enabling the structure to require no loading to be taken by the sheet piling. More than 3,000 tons of sheet piles were used in the project over the 4 year period.

ESC's cost effective design and locally manufactured sheet piles were integral for securing the scope of work.

PROJECT DETAILS



MELAKA RIVER BEFORE & AFTER



MELAKA RIVER BEFORE & AFTER



PROJECT COMPLETED



PROJECT COMPLETED

