

AL JEER FISHING HARBOUR

CASE STUDY

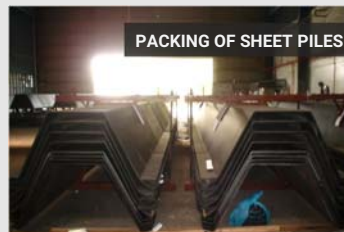
ESC proposed an sheet pile with tieback anchor wall design for the construction of a quay wall for Al Jeer Fishing Harbour in the United Arab Emirates. ESC's design provided the owner, the RAK government, with a cost-saving solution that could be constructed faster and ell within project budgets. ESC also completed full manufacture of its unique wide U profile sheet piles.

ESC carried out the alternative design calculations on behalf of the Contractor (Athena SA) and submitted them for approval to the Client (RAK Government) and their Consultant (Gibb Ltd). All relevant drawings and engineering detailing was provided by ESC for this project.

As always, ESC personnel were on site to assist Athena SA during the beginning of the installation process. Several recommendations were made regarding piling guides and handling processes. ESC provided efficient Dawson Lifting Shackles that helped increase the productivity of the installation, while ensuring maximum safety during the process.

The specified coating for the sheet piles is for sand blasting to SA2.5 followed by 50 micron of primer and then 400 micron of coal tar epoxy paint. The coating is to be applied to the entire front surface and two metres of the back surface of the Main Wall piles only.

Installation was done by pitching the sheet piles in a piling frame and driving to refusal with an ICE 815 vibro hammer. Piles were then driven to the final required level using an IHC S90 hydraulic hammer, together with a pile helmet.



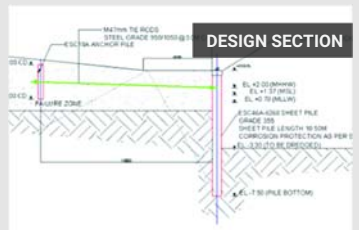
PACKING OF SHEET PILES



PACKING OF SHEET PILES



INSTALLED SHEET PILES



DESIGN SECTION



PILE DRIVING GUIDE



HARBOUR NEAR COMPLETION



ALTERNATING DRIVING SEQUENCE



Get in Touch:

T +852 3956 1868
E escglobal@escpile.com
W www.escpile.com

ESC App available now on all
smartphones & tablets
Search for "ESC Group"

