



An affiliate of:



**DELIVERING HIGH QUALITY  
MOORING BOLLARDS  
TO THE GLOBAL MARKET**

---

**ESC MOORING BOLLARDS  
CATALOGUE**

2023 EDITION  
[WWW.ESCMARINESYSTEMS.COM](http://WWW.ESCMARINESYSTEMS.COM)



## ESC MOORING BOLLARDS

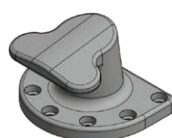
Marine mooring bollards provide a simple yet efficient method for fulfilling mooring requirements to allow safe securing of vessels next to jetties, wharves, berths and dolphins in ports and harbors. ESC can offer a wide range of cast iron or steel bollards in various sizes, grades and capacities.

ESC bollards are designed and manufactured in accordance to standards and guidelines such as BS6349: Part 4 and PIANC. Bollards are safety critical components and ESC strives to provide bollards with superior service life and resistance to physical and corrosive environments.

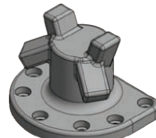
### ESC offers a full range of Mooring Bollards

- ✓ Cast iron and steel bollards in a range of configurations.
- ✓ Up to 300 ton capacity
- ✓ Complete with anchoring sets
- ✓ Corrosion Protection Coating options—primer, epoxy coating, galvanized, duplex (galvanized & painted)
- ✓ Fully customizable as bollards vary significantly between ports and countries.

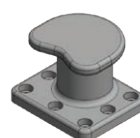
### STANDARD DESIGNS



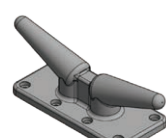
T-HEAD



T-HORN



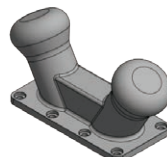
KIDNEY



CLEAT



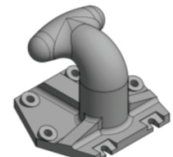
SINGLE BITT



DOUBLE BITT



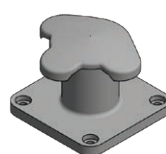
PILLAR



T HEAD JAPANESE DESIGN



PILLAR JAPANESE DESIGN



TRICORN

### STANDARD RANGE

SECTION	RATING (TONS)																	
	1	5	10	15	20	25	30	35	50	70	75	80	100	125	150	200	250	300
T-Head			✓	✓		✓	✓	✓	✓			✓	✓	✓	✓	✓	✓	✓
T-Horn				✓			✓		✓			✓	✓		✓	✓		
Kidney				✓			✓		✓				✓		✓	✓		
Cleat	✓	✓	✓	✓	✓	✓	✓	✓										
Single Bitt			✓	✓			✓		✓		✓		✓		✓	✓		
Double Bitt					✓		✓		✓		✓		✓		✓	✓		
Pillar			✓	✓			✓		✓				✓		✓	✓		
Pillar Japanese Design				✓		✓		✓	✓	✓			✓		✓	✓		
T-Head Japanese Design	✓	✓	✓			✓	✓	✓	✓	✓			✓		✓	✓		
Tricorn							✓		✓				✓		✓	✓	✓	✓

## MATERIAL SPECIFICATION

ESC bollards are produced to the highest specifications. The table gives indicative standards and grades but many other options are available on request.

MATERIALS	STANDARD(S)	GRADE(S)
Ductile Cast Iron	BS EN 1563	EN-GJS-450-10/ 500-7/ 600-3
	ASTM A536	65-45-12/ 70-50-5/ 80-55-6
	GB/T 1348	QT450-10/ QT500-7/ QT600-3
Cast Steel	ASTM A27	65-35/ 70-40/ 80-50
	ASTM A148	80-50
	GB/T 11352	ZG230-450/ ZG340-640
	EN 10293	G20Mn5
Anchor Bolts (galvanized)	ISO 898	Gr. 4.8/ 8.8 (galvanized)
	BS 3692	Gr. 4.8/ 8.8 (galvanized)
	ASTM F1554	Gr. 105 (galvanized)

## BOLLARD SELECTION & LAYOUT

Bollards should be designed and laid out according to local standards. Some of the following aspects are to be considered in the design of the berth:

- ✓ Mooring patterns and line types, sizes and angles
- ✓ Changes in draft during loading/unloading of the vessel
- ✓ Wind and current forces
- ✓ Swell, wave and tidal forces
- ✓ Other abnormal environmental loadings

Mooring loads should be calculated where possible, but the following table can be used as an approximate

guideline, also noting that if the berth is expected to experience adverse weather conditions, the bollard capacity should be increased by 25% or greater.

ESC bollards can cope with horizontal angles of  $\pm 90^\circ$  (except for pillar bollards which is in all horizontal angles) and vertical angles up to  $60^\circ$  depending on bollard type.

Design codes recommend that bollards are frequently placed at 15-30m intervals, often at the same spacing as fenders (either at the same point as fenders or midway). Another approximate guide is 15% of the length of the shortest ship.

DISPLACEMENT	APPROX. BOLLARD RATING
Up to 2,000 tons	10 tons
2,000—10,000 tons	30 tons
10,000—20,000 tons	60 tons
20,000—50,000 tons	80 tons
50,000—100,000 tons	100 tons
100,000—200,000 tons	150 tons
Over 200,000 tons	200-300 tons

## COATING SYSTEMS

Exposed to a very corrosive marine environment, bollards require a durable coating system. Standard coatingsystem for a very high corrosive environment are in accordance to BS EN ISO 12944 C5-M. Other high performance paint system, in various colors and thicknesses, can be factory applied on request.

Bollard bodies can also be supplied with hot-dip galvanized (HDG) coating on a special request basis.

Regular maintenance for bollards are needed for wear and abrasion from ropes. Cast steel bollards need frequent painting to retain full strength for it is more susceptible than ductile iron bollard.



SIGNAL YELLOW

SIGNAL BLACK

MARINE GRAY

SIGNAL BLUE

BROWN

SIGNAL RED

Other color options available upon request, please contact ESC for information.

## COLOR OPTIONS



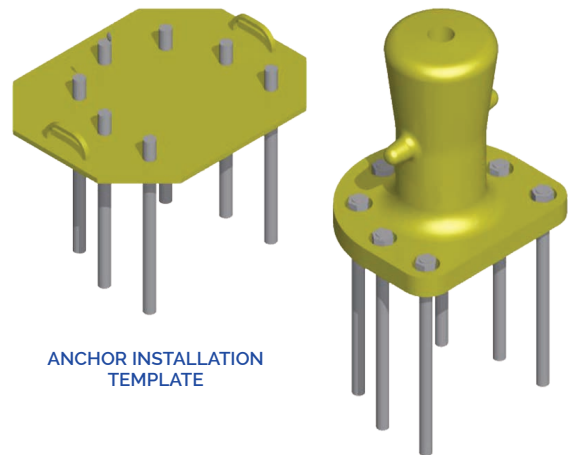


## BOLLARD INSTALLATION

Bollards must be installed correctly for a long and trouble-free service life. Anchors should accurately be installed with a template of the bolting pattern, which ESC can supply on request. Once the grout has cured to full strength, anchors can be tightened to the design preload. A thread loosening compound is frequently applied to allow future removal for replacement. Where possible, recessing the bollard in the concrete is more beneficial than surface mounting.

Fixing options for bollards include:

- ✓ Surface Mounting
- ✓ Recess Mounting
- ✓ Retrofitting
- ✓ Through bolting
- ✓ Structural Steel Mounted



## QUALITY ASSURANCE

Bollards are safety critical items and quality is paramount. Independent third party witnessing of test is available at additional cost on request. A typical quality documentation package will include:

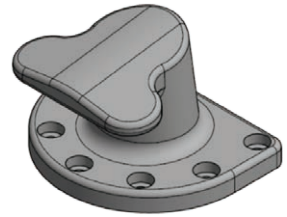
- ✓ Dimensioned drawings of bollard and accessories
- ✓ Bollard and anchorage calculations (if required)
- ✓ Inspection and test plan
- ✓ Certificate of conformance
- ✓ Physical, chemical and material properties report for casting and anchorages
- ✓ Installation guidelines

## T-HEAD BOLLARD

CAPACITY	BOLTS		BOLTS QUANTITY
	in	mm	
10 T	0.75	M20	4
15 T	0.94	M24	5
25 T	1.18	M30	5
30 T	1.18	M30	5
35 T	1.18	M30	6
50 T	1.42	M36	5
80 T	1.65	M42	6
100 T	1.65	M42	7
125 T	1.89	M48	7
150 T	1.89	M48	7
200 T	2.20	M56	8
250 T	2.52	M64	8
300 T	2.52	M64	10

Custom sizes available on request.

ESC's latest generation of T Head Bollards provide a compact high strength bollard system that can be utilised in a multitude of configurations. ESC can offer T head bollards at up to 300 ton capacity in either ductile cast iron or cast steel materials.

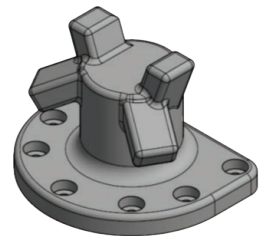


## T-HORN BOLLARD

CAPACITY	BOLTS		BOLTS QUANTITY
	in	mm	
15 T	0.94	M24	5
30 T	1.18	M30	5
50 T	1.42	M36	5
80 T	1.65	M42	6
100 T	1.65	M42	7
150 T	1.89	M48	7
200 T	2.20	M56	8

Custom sizes available on request.

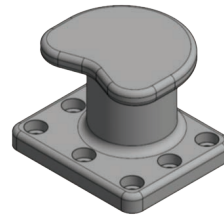
ESC's latest generation of T Horn Bollards provide a compact high strength bollard system that can be utilised in a multitude of configurations. The main feature is that the bollard may carry two mooring lines from different vessels on the same bollard. They are well suited to general purpose berths.



## KIDNEY BOLLARD

CAPACITY	BOLTS		BOLTS QUANTITY
	in	mm	
15 T	0.94	M24	5
30 T	1.18	M30	5
50 T	1.42	M36	5
100 T	1.65	M42	7
150 T	1.89	M48	7
200 T	2.20	M56	8

Custom sizes available on request.



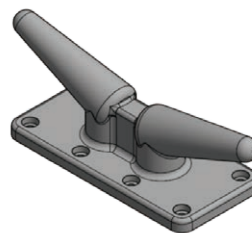
Kidney bollards are well suited for berths with low tidal ranges. ESC's range is for general purpose applications up to 200 tons, from small wharves to large vessel terminals. Kidney bollards are not an optimum body shape for steel line angles.



## CLEAT BOLLARD

CAPACITY	BOLTS		BOLTS QUANTITY
	in	mm	
1 T	0.63	M16	4
5 T	0.79	M20	4
10 T	0.79	M20	6
15 T	0.94	M24	6
20 T	0.94	M24	6
25 T	0.94	M24	6
30 T	0.94	M24	8
35 T	1.18	M30	8

Custom sizes available on request.



Cleat bollards are a low profile bollard well suited for mooring light commercial or recreational vessels in small jetties or marinas. ESC provides cleat bollards in ductile cast iron or cast steel body materials.



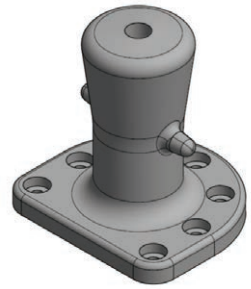


## SINGLE BITT BOLLARD

CAPACITY	BOLTS		BOLTS QUANTITY
	in	mm	
10 T	0.94	M24	4
15 T	0.94	M24	4
30 T	1.18	M30	5
50 T	1.42	M36	6
75 T	1.65	M42	6
100 T	1.89	M48	7
150 T	2.20	M56	7
200 T	2.20	M56	8
125 T	1.89	M48	7
150 T	1.89	M48	7
200 T	2.20	M56	8

Custom sizes available on request.

Single Bitt Bollards are well suited for berths with large tidal ranges and for steep mooring angles. This configuration is especially popular in North America and can be utilised simultaneously with multiple mooring lines.

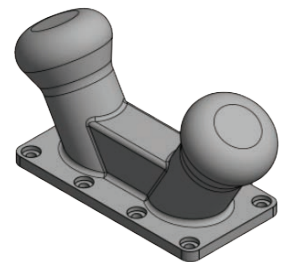


## DOUBLE BITT BOLLARD

CAPACITY	BOLTS		BOLTS QUANTITY
	in	mm	
20 T	0.79	M20	8
30 T	0.87	M22	8
50 T	1.18	M30	8
75 T	1.42	M36	10
100 T	1.65	M42	10
150 T	1.89	M48	10
200 T	2.20	M56	10

Custom sizes available on request.

In some regions, referred to as twin horn bollards, ESC's double bitt bollards offer the feature of accepting multiple mooring lines simultaneously. Their narrow base profile is also an advantageous feature for wharves with limited work areas.

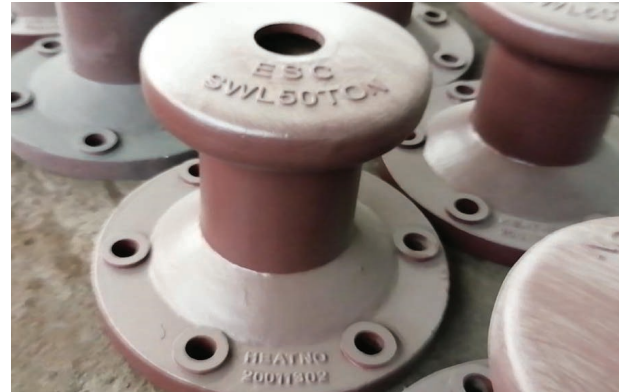
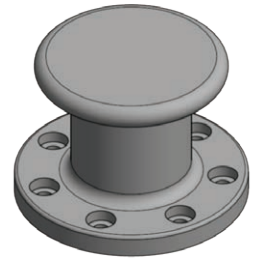


## PILLAR BOLLARD

CAPACITY	BOLTS		BOLTS QUANTITY
	in	mm	
10 T	0.79	M20	4
15 T	0.94	M24	4
30 T	1.42	M36	4
50 T	1.42	M36	4
100 T	1.89	M48	7
150 T	2.20	M56	8
200 T	2.52	M64	8

Custom sizes available on request.

Pillar Bollards are well suited for small tidal range applications and jetties where vessels can berth on both sides due to its capability of handling loads in the full 360° horizontal range.

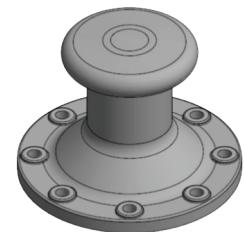


## PILLAR BOLLARD - JAPANESE DESIGN

CAPACITY	BOLTS		BOLTS QUANTITY
	in	mm	
15 T	1.42	M36	4
25 T	1.89	M48	4
35 T	1.89	M48	6
50 T	2.20	M56	6
70 T	2.52	M64	6
100 T	2.52	M64	8
150 T	3.15	M80	8
200 T	3.54	M90	8

Custom sizes available on request.

These pillar bollards follow a time tested design from the 1970s utilising a lower grade cast steel and anchor material but a larger profile. These exhibit the same design features as ESC's modern pillar bollard design but are to be recess mounted to reach the design capacity.





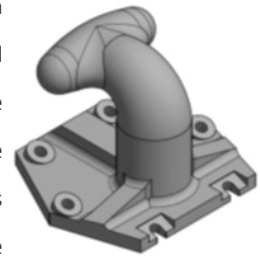
## T-HEAD BOLLARD - JAPANESE DESIGN

CAPACITY	BOLTS		BOLTS QUANTITY
	in	mm	
5 T	0.79	M20	4
10 T	1.06	M27	4
15 T	1.30	M33	4
25 T	1.65	M42	4
30 T	1.65	M42	6
35 T	1.65	M42	6
50 T	1.89	M48	6
70 T	2.20	M56	6
100 T	2.52	M64	6
150 T	2.83	M72	6
200 T	4.72	M120	6

Custom sizes available on request.

ESC has produced heavy duty T-Head bollards—Japanese design for ports around Asia, as a time tested robust design.

These exhibit the same design features as ESC's modern T-Head bollard design but are to be recess mounted to reach the design capacity. The anchor bolts are also orientated at a 22° angle to the vertical.



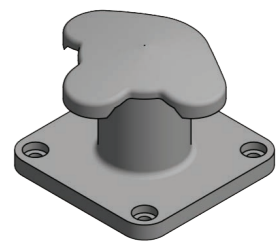
## TRICORN BOLLARD

CAPACITY	BOLTS		BOLTS QUANTITY
	in	mm	
30 T	1.18	M30	4
50 T	1.42	M36	4
100 T	2.05	M52	4
150 T	2.52	M64	4
200 T	2.36	M60	4
250 T	2.68	M68	4
300 T	2.68	M68	4

Custom sizes available on request.

ESC Tricorn Bollards is ideal for any mooring requirement, it is a unique triple-lobed Tricorn Bollard that provides more holding power than any other bollard in its class, even on line angles up to 70°.

Its generous trunk diameter reduces mooring line stresses. Integrated load fuses and capacities for up to 3000kN are available.



## PROJECT PHOTOS





## PROJECT PHOTOS





## ESC GLOBAL CONTACT LIST

### Australia, New Zealand & PNG

#### ESC Asia Limited

**A** Acclime Offices 17/F  
95 Queensway Admiralty  
Hong Kong  
**E** escglobal@escpile.com  
**T** +852 8198 0239  
**W** www.escpile.com

### Argentina, Paraguay & Uruguay

#### Cimtronic Design & Engineering

**A** Vedia 144, 5th Floor, Office 2  
(C1429EIB) Nuñez CABA, Argentina  
**E** informes@cimtronic.com.ar  
**E** fgallo@cimtronic.com.ar  
**T** +55 (31) 99976 4714  
**W** www.escpile.com.br

### Brazil

#### ESC Brazil

**A** Sao Paulo, SP, Brazil  
**E** info@escpile.com.br  
**T** +55-11-3170-8598  
**W** www.escpile.com.br

### China

#### ESC Trading (Shanghai) Co., Ltd.

**A** Rm 02, 5/F, No. 16, Gopher  
Qibao T2 Building, Lane 399,  
Xinlong Rd., Minhang District,  
Shanghai, China  
**E** vincenthuang@escpilechina.com  
**E** brucecolson@escpilechina.com  
**T** +86 21 3126 3501  
**T** +86 21 3126 3502

### Indonesia

#### PT ESC Steel Indonesia

**A** Graha Mustika Ratu, 5th Floor  
#505, Jln. Jend Gatot Subroto  
Kav. 74-75, Jakarta 12870  
**E** zulfan@escpile.com  
**E** chanhonkit@escpile.com  
**T** +62 811 980 376  
**T** +62 821 247 99 468  
**W** www.escsteel.co.id

### Malaysia, South East Asia & South Asia

#### ESC Steel Engineering Sdn Bhd

**A** F-1-2 Second Floor, Block F Suite 5  
Setia Walk, Persiaran Wawasan,  
Pusat Bandar Puchong  
47160 Puchong, Selangor, Malaysia  
**E** chanhonkit@escpile.com  
**T** (Malaysia) +6012 428 5759  
**W** www.escsteel.com.my

### Mexico, Central & South America

#### Acerlum ESC SAPI de CV

**A** Loma de la Cañada No. 4,  
Loma, Querétaro, México  
CP 76060  
**E** info@acerlum-esc.com  
**T** +52 442 4711 500  
**W** www.acerlum-esc.com

### Middle East & Africa

#### ESC Middle East

**A** P.O. Box 131355, Industrial Area  
City of Abu Dhabi, Mussafah,  
Abu Dhabi, UAE  
**E** escuae@escpileuae.com  
**E** kevinashdown@escpileuae.com  
**T** +971 2550 6188  
**F** +971 2550 6112  
**W** www.escpileuae.com

### Netherlands

#### Europile B.V.

**A** Dam Bustersstraat 7 NL  
4651 Sj Steenbergen  
Netherlands  
**E** info@europile.nl  
**E** esceuro@escpile.com  
**T** +31 167 534 747  
**F** +31 167 534 850  
**W** www.europile.com

### Nigeria

#### ESC Nigeria Ltd

**A** No.72, Apt 5, Lome Crescent,  
Wuse Zone 7, Abuja,  
Nigeria  
**E** escnigeria@escpile.com  
**E** bulkplus@gmail.com  
**T** +234 7050 8888 22  
**F** +234 8067 3905 66

### Philippines

#### ESC Steel Philippines, Inc.

**A** 12V 12/F Cyber One Building,  
11 Eastwood Avenue, Eastwood  
City Cyberpark, Bagumbayan,  
Quezon City, Philippines  
**E** manila@escsteelphil.com  
**E** cebu@escsteelphil.com  
**T** +632 8526 8839  
**M** +63 917 202 7798 / +63 920 504 3801  
**W** www.escsteelphil.com

### Russia

#### ESC-Beregstal Jsc

**A** 20 Ulitsa Lotsmanskaya  
St Petersburg 190121  
Russian Federation  
**E** escrussia@escpile.com  
**E** vovauliev@gmail.com  
**T** +7812 495 0806  
**F** +7812 325 9357

### Ukraine

#### Mageba Ukraine LLC

**A** Gagarina Str.55, off 466  
Cherkasy, 18000, Ukraine  
**E** escukraine@escpile.com  
**E** oleg@escpile.com  
**T** +38 472 503661  
**F** +38 472 503662

### United States & Canada

#### ESC Steel LLC

**Contact: Bruce Colson**  
**A** (North Carolina) 18805 W Catawba  
Ave, Suite #207, Cornelius, 28031,  
North Carolina, USA  
**E** bruce@escsteel.com  
**T** +1 (704) 654 0321  
**T** +1 (980) 689 4388  
**T** (Canada) +1 (604) 235 1911  
**F** (Canada) +1 (415) 500 9825  
**W** www.escsteel.com

### United States & Canada

#### ESC Steel LLC

**E** info@escsteel.com  
**E** kevin@escsteel.com  
**T** +1 (281) 205 7261

#### Sales & Distribution Yard

**A** 5268 Davidson Highway  
Concord, North Carolina  
28027, USA

### United Kingdom & Ireland

#### ESC Steel LLC

**Contact: Bruce Colson**  
**A** 18805 W Catawba Ave,  
Suite #207, Cornelius, 28031,  
North Carolina, USA  
**E** bruce@escsteel.com  
**T** +1 (704) 654 0321  
**T** +1 (980) 689 4388  
**T** +1 (604) 235 1911  
**F** +1 (415) 500 9825  
**W** www.escsteel.com

# ESC Product Catalogs

You may download all our product catalogs on this <https://www.escglobalgroup.com/esc-group-product-catalogues> or request via email: [escglobal@escpile.com](mailto:escglobal@escpile.com). If you are viewing online, you may click on the image below to download.



ESC Capability Statement



General Catalogue



Sheet Pile Installation Manual



Steel Structures Brochure



Trench Shoring Catalogue



Vinyl Sheet Pile Catalogue



Vinyl Sheet Pile Installation Guide



Port & Offshore Structures Capability Statement



Marine Fender Catalogue



Project Case Study - Book I



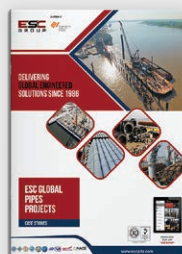
Project Case Study - Book II



Project Case Study - Book III



Combination Walls Project Case Study



Steel Pipes Projects Case Study

## ESC CAPABILITY STATEMENT

## GENERAL CATALOGUE

## SHEET PILE INSTALLATION MANUAL

## STEEL STRUCTURES CAPABILITIES

## TRENCH SHORING CATALOGUE

## VINYL SHEET PILE CATALOGUE

## VINYL SHEET PILE INSTALLATION GUIDE

## PORT & OFFSHORE STRUCTURES

## MARINE FENDERS CATALOGUE

## ESC PROJECT CASE STUDIES

## COMBINATION WALL PROJECTS

## STEEL PIPE PILING PROJECTS

An affiliate of:



**ESC**  
MARINE SYSTEMS



MARUBENI  
ITOCHU  
STEEL



DOWNLOAD OUR  
**ESC GROUP APP**

## CONTACT US



Acclime Offices  
17/F United Centre,  
95 Queensway Admiralty  
Hong Kong



+852 8198 0239



info@escmarinesystems.com  
www.escmarinesystems.com

f/escmarinesystems

@ESCMarineSystem

in /esc-marine-systems

ESC Group

@esc\_marine