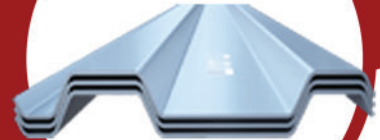




DELIVERING **TRENCH SHORING**
PRODUCTS TO THE GLOBAL MARKET

WWW.ESCTRENCHSHORING.COM



A member of:



TRENCH SHORING CATALOG

2024 Edition



ESC TRENCH SHORING, INC.

ESC has fully developed its Trench Shield Series (also known as Trench Boxes)

A two-sided, high-quality and economical excavation support system that provides a safe working environment in trenches up to 40 feet deep.

ESC's trench shields are a heavy duty and robust product designed and

manufactured in compliance with both National and International Standards.

All shields are certified by third party professional engineers, following the guidelines and recommendations of NAXSA (North American Excavation

Shoring Association) and comply with all OSHA Standards.

Produced in manufacturing facilities in Abu Dhabi, UAE, USA and Mexico.



Table of **CONTENTS**

All About Trench Shoring	04
ESC Trench Shields Series	06
Manhole Trench Shield Series	12
Tapping Boxes	13
Aluminum Trench Shields	14
Modular Box Series	16
Spreader/Strut Solutions	17
Trench Shield Assembly Guide	18
Common Trench Sheets	20
Bedding Boxes	21
Product & Project Photos	22
ESC Product Catalogs	23

All About Trench Shoring

The ESC trench shield product range is specifically designed to cater to the unique requirements of the US and North American construction practices, and has been verified and certified by a third-party professional Engineer in the USA.

Features

- ✓ Designed & manufactured in accordance with OSHA 29 CFR 1926.650, 29 CFR 1926.651 and CFR 1926.652, Sub-part P, Excavations.
- ✓ 3rd party product certificates available for all products.
- ✓ Heavy duty robust design.
- ✓ Flat pack delivery.
- ✓ Fixed or adjustable spreaders available.
- ✓ Custom box sizes are available.
- ✓ Follow NAXSA - Approved shoring shield Tab Data Sheet.
- ✓ All TSB Series panels are fully welded for maximum strength. No stitch welds or spot welds used.
- ✓ 3/4" standard push pads.
- ✓ Reinforced knife edge supplied as standard on 8ft and 10ft height shields. 4ft and 6ft shields supplied with flat bottoms as standard.
- ✓ Knife edge and flat bottom interchangeable on request.

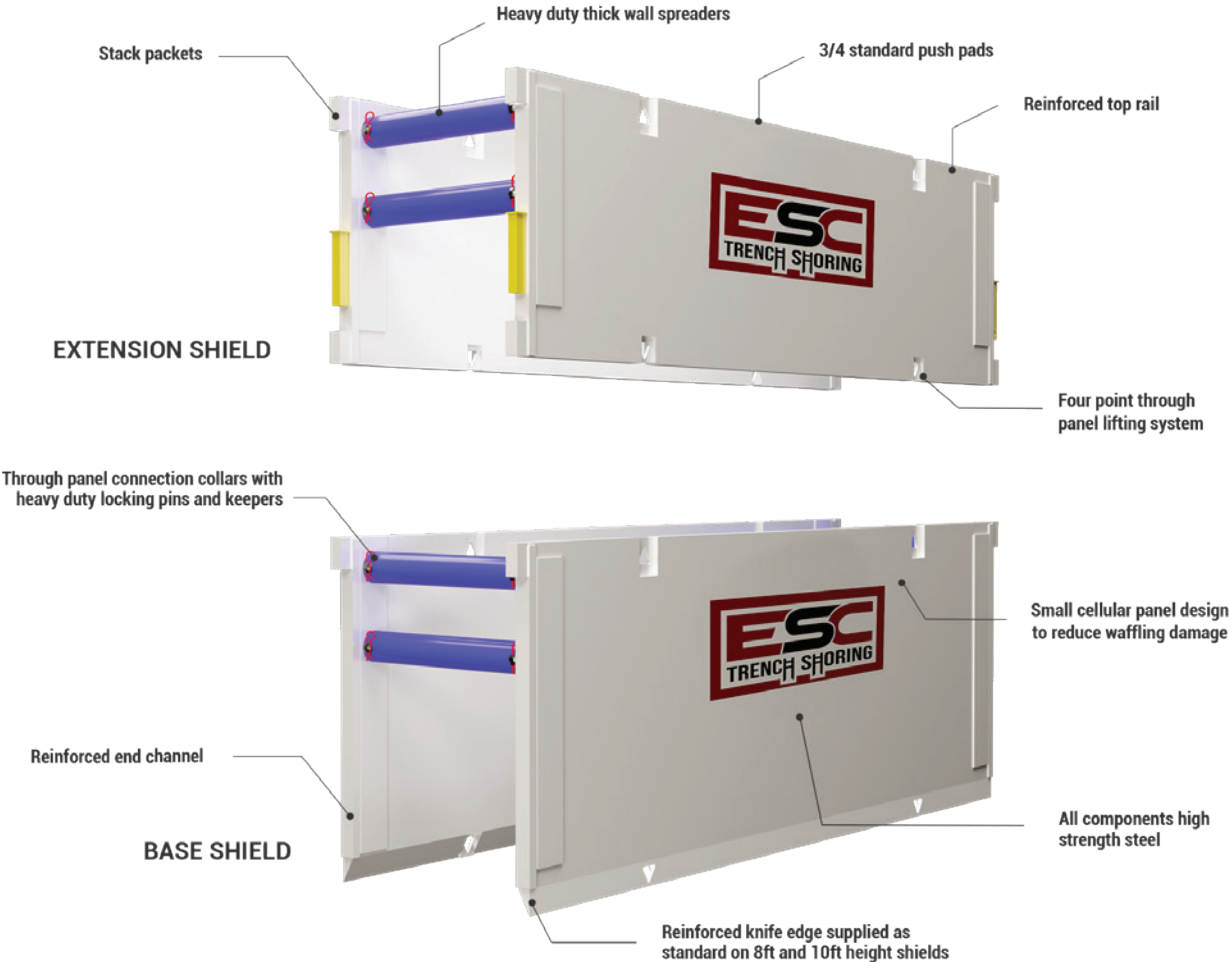
Options

- ✓ Additional Stack pockets.
- ✓ Fifth lower spreader.
- ✓ Pulling Lugs.

Safety Guide

- ✓ Soil type to be determined by qualified competent person.
- ✓ Assembly as per ESC procedures.
- ✓ As member of NAXSA (North American Excavation Shoring Association), ESC adheres to all industry norms and regulations.

ESC TRENCH SHIELD



BUILT TO LAST
ROBUST CELLULAR DESIGN





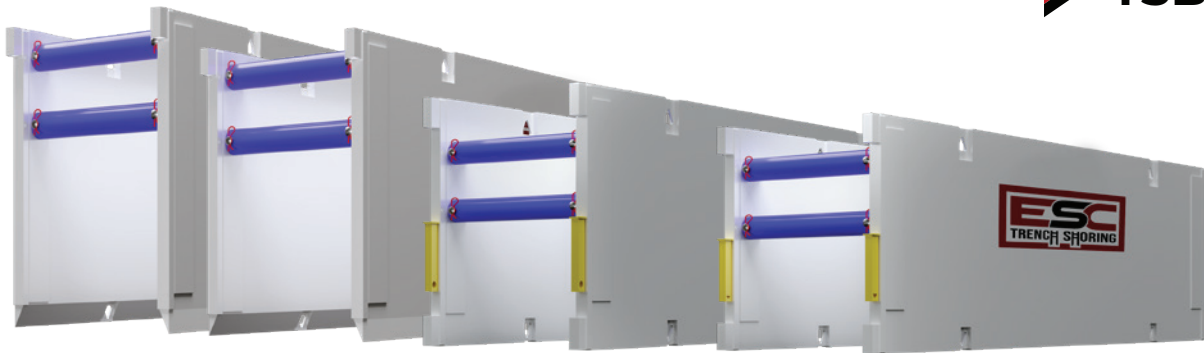
 **TSB4**

 **TSU4**

 **TSB6**

 **TSU6**

 **TSB8**



ESC **Trench Shield Series**

ESC's trench shoring product line comprises of 4ft, 6ft, 8ft and 10ft panel heights and a range of panel lengths from 10ft to 24ft. Each panel size is available in 4", 6" or 8" thickness depending on the end user requirements. All the shields are stackable and may be used as extension shields to

achieve protection in deeper trench cuts.

Heavy duty spreaders are available in a variety of fixed lengths, or alternatively adjustable length spreaders may be used to achieve a range of excavation widths.

ESC

Trench Shield Series

4" TSB SERIES

TECHNICAL SPECIFICATIONS								
SERIES	HEIGHT BY LENGTH	WEIGHT (2 x panels)	PIPE CLEARANCE	LENGTH BETWEEN SPREADERS	SHIELD CAPACITY	MAX EXCAVATION DEPTH		
	H X L	(2 x panels)	CH	CL		B45-Soil	C-60 Soil	C-80 Soil
	ft	lb	in	ft	psf	ft	ft	ft
TSB4-410	4 x 10	2992	18	7'11"	4486	40	40	30
TSB4-412	4 x 12	3402	18	9'11"	2871	40	40	30
TSB4-416	4 x 16	4221	18	13'11"	1465	33	25	19
TSB4-420	4 x 20	5665	18	17'11"	1053	24	18	14
TSB4-610	6 x 10	4074	40	7'11"	3000	40	40	30
TSB4-612	6 x 12	4594	40	9'11"	2748	40	40	30
TSB4-616	6 x 16	5738	40	13'11"	1402	33	25	20
TSB4-620	6 x 20	7871	40	17'11"	1020	24	19	15
TSB4-810	8 x 10	4906	60	7'11"	2150	40	39	30
TSB4-812	8 x 12	5627	60	9'11"	1780	40	32	25
TSB4-816	8 x 16	7068	60	13'11"	1334	40	25	20
TSB4-820	8 x 20	9923	60	17'11"	971	24	19	15

- ✓ All 4' and 6' shields can be used as Extension Shields.
- ✓ Depth ratings include consideration of surcharge load of 72 psf.
- ✓ As per NAXSA recommendations, depth of cut has been limited to 40ft for types A, B and C60 soil, and 30ft for C80 soil regardless of the capacity of the shield. If deeper cuts are required, it is recommended that a professional engineer is engaged to evaluate the site and soil conditions and specify a suitable trench shield or other shoring solution.

ESC Trench Box Series

4" TSU SERIES

TECHNICAL SPECIFICATIONS								
MODEL	HEIGHT BY LENGTH	WEIGHT	PIPE CLEARANCE	LENGTH BETWEEN SPREADERS	SHIELD CAPACITY	MAX EXCAVATION DEPTH		
	H X L	(2 x panels)	CH	CL		B-45 Soil	C-60 Soil	C-80 Soil
	ft	lb	in	ft	psf	ft	ft	ft
TSU4-416	4 x 16	4259	16"	13'-11"	1651	37	28	22
TSU4-420	4 x 20	5122	16"	17'-11"	977	22	17	13
TSU4-612	6 x 12	4533	40"	9'-11"	2820	40	40	30
TSU4-616	6 x 16	5736	40"	13'-11"	1620	37	29	22
TSU4-620	6 x 20	6887	40"	17'-11"	959	23	18	14
TSU4-624	6 x 24	8046	40"	21'-11"	643	16	13	10
TSU4-810	8 x 10	5261	64"	7'-11"	2400	40	40	30
TSU4-812	8 x 12	5918	64"	9'-11"	2409	40	40	30
TSU4-816	8 x 16	7658	64"	13'-11"	1560	37	29	23
TSU4-820	8 x 20	8997	64"	17'-11"	950	24	19	15
TSU4-824	8 x 24	10709	64"	21'-11"	650	17	14	11
TSU4-1020	10 x 20	10999	84"	17'-11"	930	24	19	16

Options

- ✓ Knife edge or flat bottom
- ✓ 5th spreader collar



ESC Trench Box Series

6" TSB SERIES

TECHNICAL SPECIFICATIONS								
SERIES	HEIGHT BY LENGTH	WEIGHT	PIPE CLEARANCE	LENGTH BETWEEN SPREADERS	SHIELD CAPACITY	MAX EXCAVATION DEPTH		
	H X L	(2 x panels)	CH	CL		B45-Soil	C-60 Soil	C-80 Soil
	ft	lb	in	ft	psf	ft	ft	ft
TSB6-416	4 x 16	4896	18	13'11"	2518	40	40	30
TSB6-420	4 x 20	5857	18	17'11"	1523	34	26	20
TSB6-424	4 x 24	7605	18	21'11"	1181	27	20	16
TSB6-616	6 X 16	6532	40	13'11"	2358	40	40	30
TSB6-620	6 x 20	7842	40	17'11"	1426	33	26	20
TSB6-624	6 x 24	10411	40	21'11"	1127	26	21	16
TSB6-816	8 x 16	7922	64	13'11"	2030	40	37	28
TSB6-820	8 x 20	10897	64	17'11"	1573	37	29	23
TSB6-824	8 x 24	12762	64	21'11"	1053	26	20	16
TSB6-1016	10 x 16	9403	76	13'11"	1501	37	29	23
TSB6-1020	10 x 20	13330	76	17'11"	1338	33	26	21
TSB6-1024	10 x 24	15624	76	21'11"	1046	27	21	17

- ✓ All 4' and 6' shields can be used as Extension Shields.
- ✓ Depth ratings include consideration of surcharge load of 72 psf.
- ✓ As per NAXSA recommendations, depth of cut has been limited to 40ft for types A, B and C60 soil, and 30ft for C80 soil regardless of the capacity of the shield. If deeper cuts are required, it is recommended that a professional engineer is engaged to evaluate the site and soil conditions and specify a suitable trench shield or other shoring solution.



ESC TSU Trench Box Series

6" TSU SERIES

TECHNICAL SPECIFICATIONS								
MODEL	HEIGHT BY LENGTH	WEIGHT	PIPE CLEARANCE	LENGTH BETWEEN SPREADERS	SHIELD CAPACITY	MAX EXCAVATION DEPTH		
	H X L	(2 x anels)	CH	CL		B-45 Soil	C-60 Soil	C-80 Soil
	ft	lb	in	ft	psf	ft	ft	ft
TSU6-820	8 x 20	10080	64"	17'-11"	1550	37	29	22
TSU6-824	8 x 24	11797	64"	21'-11"	1009	25	20	16
TSU6-1012	10 x 12	8142	84"	13'-11"	2020	40	37	29
TSU6-1020	10 x 20	12075	84"	17'-11"	1170	29	23	19

Options

- ✓ Knife edge or flat bottom
- ✓ 5th spreader collar



ESC Trench Box Series

8" TSB SERIES

TECHNICAL SPECIFICATIONS								
SERIES	HEIGHT BY LENGTH	WEIGHT	PIPE CLEARANCE	LENGTH BETWEEN SPREADERS	SHIELD CAPACITY	MAX EXCAVATION DEPTH		
	H X L	(2 x panels)	CH	CL		B45-Soil	C-60 Soil	C-80 Soil
	ft	lb	in	ft	psf	ft	ft	ft
TSB8-416	4 x 16	5720	18	13'11"	3878	40	40	30
TSB8-420	4 x 20	6876	18	17'11"	2346	40	40	30
TSB8-424	4 x 24	8033	18	21'11"	1571	35	27	21
TSB8-616	6 X 16	7563	40	13'11"	3150	40	40	30
TSB8-620	6 x 20	9119	40	17'11"	2172	40	38	29
TSB8-624	6 x 24	10676	40	21'11"	1454	34	26	20
TSB8-816	8 x 16	9175	64	13'11"	2030	40	37	28
TSB8-820	8 x 20	12380	64	17'11"	1620	38	30	23
TSB8-824	8 x 24	14526	64	21'11"	1350	32	25	20
TSB8-1016	10 x 16	11252	76	13'11"	1680	40	32	25
TSB8-1020	10 x 20	13547	76	17'11"	1345	33	26	21
TSB8-1024	10 x 24	18142	76	21'11"	1120	28	22	18

- ✓ All 4' and 6' shields can be used as Extension Shields.
- ✓ Depth ratings include consideration of surcharge load of 72 psf.
- ✓ As per NAXSA recommendations, depth of cut has been limited to 40ft for types A, B and C60 soil, and 30ft for C80 soil regardless of the capacity of the shield. If deeper cuts are required, it is recommended that a professional engineer is engaged to evaluate the site and soil conditions and specify a suitable trench shield or other shoring solution.



ESC Trench Shield Manhole Series

4" MANHOLE SERIES

TECHNICAL SPECIFICATIONS								
SERIES	HEIGHT BY LENGTH	WEIGHT	PIPE CLEARANCE	LENGTH BETWEEN SPREADERS	SHIELD CAPACITY	MAX EXCAVATION DEPTH		
	H X L	(2 x panels)	CH	CL		B45-Soil	C-60 Soil	C-80 Soil
	ft	lb	in	ft	psf	ft	ft	ft
MSB4-48	4 x 8	2826	24	7'2"	2400	53	40	30
MSB4-410	4 x 10	3143	24	9'2"	2400	53	40	30
MSB4-68	6 x 8	3775	48	7'2"	2200	49	37	28
MSB4-610	6 x 10	4276	48	9'2"	2200	49	37	28
MSB4-88	8 x 8	4672	52	7'2"	2100	47	35	25
MSB4-810	8 x 10	5358	52	9'2"	2100	47	35	25
MSB4-1010	10 x 10	6442	76	9'2"	2000	47	35	25

ESC Manhole Boxes provide a four-wall shield for utmost worker safety. They are specially built for maintenance hole installations, tie-ins, and repair work. ESC Manhole Boxes offer the flexibility you need with the protection compliant with OSHA requirements. Manhole boxes can be used in combination with the standard trench shields for different applications.

.5" sch 80 spreaders



ESC

X Series 4-Sided Manhole Boxes

4" MANHOLE SERIES

TECHNICAL SPECIFICATIONS								
SERIES	HEIGHT BY LENGTH	WEIGHT	PIPE CLEARANCE	LENGTH BETWEEN SPREADERS	SHIELD CAPACITY	MAX EXCAVATION DEPTH		
	H X L	(2 x panels)	CH	CL		B45-Soil	C-60 Soil	C-80 Soil
	ft	lb	in	ft	psf	ft	ft	ft
XM4-48	4x8	3000	15"	6' 11.75"	2500	30'	35'	30'
XM4-410	4x10	3500	15"	8' 11.75"	2500	30'	35'	30'
XM4-412	4x12	4000	15"	10' 11.75"	2500	30'	35'	30'
XM4-88	8x8	5200	63"	6' 11.75"	3012	40'	40'	30'
XM4-810	8x10	5700	63"	8' 11.75"	1934	40'	32'	24'
XM4-812	8x12	6100	63"	10' 11.75"	1628	36'	27'	20'

ESC

X Series 4-Sided Tapping Boxes

AND STACKERS

TECHNICAL SPECIFICATIONS							
SERIES	HEIGHT BY LENGTH	WEIGHT	LENGTH BETWEEN SPREADERS	SHIELD CAPACITY	MAX EXCAVATION DEPTH		
	H X L	(2 x panels)	CL		B45-Soil	C-60 Soil	C-80 Soil
	ft	lb	ft	psf	ft	ft	ft
XTB4-48	4x8	3500	7' 4"	2900	40'	40'	40'
XTB4-410	4x10	3800	9' 4"	2900	40'	40'	40'
XTB4-412	4x12	4100	11' 4"	2900	40'	40'	40'
XTB4-88	8x8	5000	7' 4"	2909	40'	40'	30'
XTB4-810	8x10	6000	9' 4"	2304	40'	37'	27'
XTB4-812	8x12	7000	11' 4"	2000	40'	31'	25'

Options

- ✓ Optional knife edge or flat bottom
- ✓ Trapezoid cutouts 3' x 5'



ESC Aluminum Trench Shield Series

ESC Trench Shoring's ABX Aluminum Trench Shields are lightweight and high strength. Built from high grade tempered aluminum, ESC offer a standard range or can custom build a shield to suit your requirements.



Features & Benefits

- ✓ Certified by US Professional Engineer.
- ✓ Constructed from 6061-T6 Aluminum Alloy.
- ✓ 3" wall thickness.
- ✓ 4" steel spreader thickness.
- ✓ Custom lengths on request.
- ✓ Lifting lugs.
- ✓ Largest working range in the industry.
- ✓ Adjustable vertical height clearance.
- ✓ Lengths up to 16ft.
- ✓ 6ft and 8ft panel heights.
- ✓ Easy to install.
- ✓ Light weight.
- ✓ Ideal for minor construction activities such as routine maintenance work and basic repairs.
- ✓ Foam filling is standard on all Aluminum Boxes.

 **ABX3-6**

 **ABX3-8**



6' ALUMINUM TRENCH SHIELD SERIES

3" WALL

TECHNICAL SPECIFICATIONS								
SERIES	HEIGHT BY LENGTH	WEIGHT	PIPE CLEARANCE	LENGTH BETWEEN SPREADERS	SHIELD CAPACITY	MAX EXCAVATION DEPTH		
	H X L	(2 x panels)	CH	CL		B45-Soil	C-60 Soil	C-80 Soil
	ft	lb	in	ft	psf	ft	ft	ft
ABX3-68	6 x 8	1,031	34	6'2"	1,404	25	20	18
ABX3-610	6 x 10	1,200	34	8'2"	1,124	25	20	16
ABX3-612	6 x 12	1,369	34	10'2"	936	22	17	14
ABX3-614	6 x 14	1,538	34	12'2"	803	19	15	12
ABX3-616	6 x 16	1,707	34	14'2"	634	15	12	10

8' ALUMINUM TRENCH SHIELD SERIES

3" WALL

TECHNICAL SPECIFICATIONS								
SERIES	HEIGHT BY LENGTH	WEIGHT	PIPE CLEARANCE	LENGTH BETWEEN SPREADERS	SHIELD CAPACITY	MAX EXCAVATION DEPTH		
	H X L	(2 x panels)	CH	CL		B45-Soil	C-60 Soil	C-80 Soil
	ft	lb	in	ft	psf	ft	ft	ft
ABX3-88	8 x 8	1,371	40	6'2"	1,229	25	20	18
ABX3-810	8 x 10	1,597	40	8'2"	982	24	19	15
ABX3-812	8 x 12	1,823	40	10'2"	819	21	16	13
ABX3-814	8 x 14	2,048	40	12'2"	640	17	13	11
ABX3-816	8 x 16	2,274	40	14'2"	475	13	11	9



ESC Modular Box Series

2.8" PANEL SERIES

TECHNICAL SPECIFICATIONS						
SERIES	HEIGHT BY LENGTH	WEIGHT	SHIELD CAPACITY	MAX EXCAVATION DEPTH		
	H X L	(2 x panels)		B45-Soil	C-60 Soil	C-80 Soil
	ft	lb	psf	ft	ft	ft
AP3-22	2 x 2	35	2250	50	40	30
AP3-24	2 x 4	63	2237	50	40	30
AP3-26	2 x 6	92	1491	50	40	30
AP3-28	2 x 8	120	1119	37	28	21
AP3-210	2 x 10	148	895	23	18	13
AP3-212	2 x 12	177	746	16	12	9
AP3-214	2 x 14	205	558	12	9	7
AP3-216	2 x 16	233	425	9	7	5

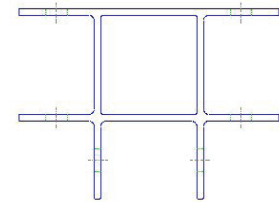
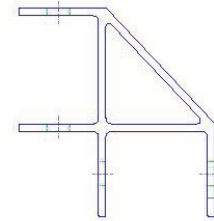


CORNER END POSTS

TECHNICAL SPECIFICATIONS		
SERIES	LENGTH	WEIGHT
	ft	lb
ACC-2	2	14
ACC-4	4	29
ACC-6	6	43
ACC-8	8	57
ACC-10	10	72
ACC-12	12	86

THREE WAY T POSTS

TECHNICAL SPECIFICATIONS		
SERIES	LENGTH	WEIGHT
	ft	lb
ATC-2	2	19
ATC-4	4	38
ATC-6	6	57
ATC-8	8	76
ATC-10	10	95
ATC-12	12	114

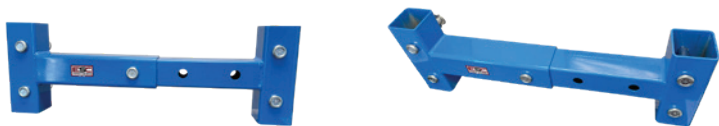


Spreader/Strut Solutions

Heavy duty spreaders are available in a variety of fixed lengths, or alternatively adjustable length spreaders may be used to achieve a range of excavation widths.



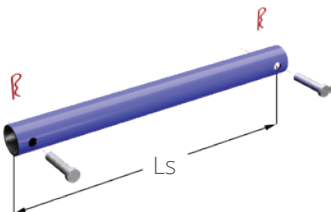
AS SERIES



AS SERIES
COMMON ADJUSTABLE STRUTS

AS SPREADER RANGE			
REFERENCE	MIN LENGTH	MAX LENGTH	WEIGHT
	in	in	AS3 +AS4 lb
AS-3036	30	36	78.59
AS-3648	36	48	92.52
AS-4260	42	60	108.76
AS-5484	54	84	136.60
AS-6096	60	96	150.52
AS-72120	72	120	183.04
AS-84144	84	144	210.90

SN8 SERIES



SN8 SERIES
FIXED LENGTH SPREADERS

TECHNICAL SPECIFICATIONS		
MODEL	LENGTH	WEIGHT
	LS	(per spreader)*
	in	lb
SN8-24	24	87
SN8-30	30	108
SN8-36	36	130
SN8-42	42	152
SN8-48	48	174
SN8-54	54	195
SN8-60	60	217
SN8-66	66	239
SN8-72	72	260
SN8-78	78	282
SN8-84	84	304
SN8-96	96	347
SN8-108	108	391
SN8-120	120	434
SN8-144	144	521
SN8-168	168	607

* *SN Series* spreaders are for standard steel trench shields;
* *AS Series* spreaders are for aluminum trench shields.
* spreader weights exclude weights of pins and keepers

ESC Trench Shield Assembly Guide

ESC Trench Shields are easy to assemble. It is advisable for users to strictly follow the procedures supplied by ESC.

A. Flat pack delivery.



B. Cut packing straps/lift top panel.



C. Erect 4 spreaders, insert pin and R-clip.

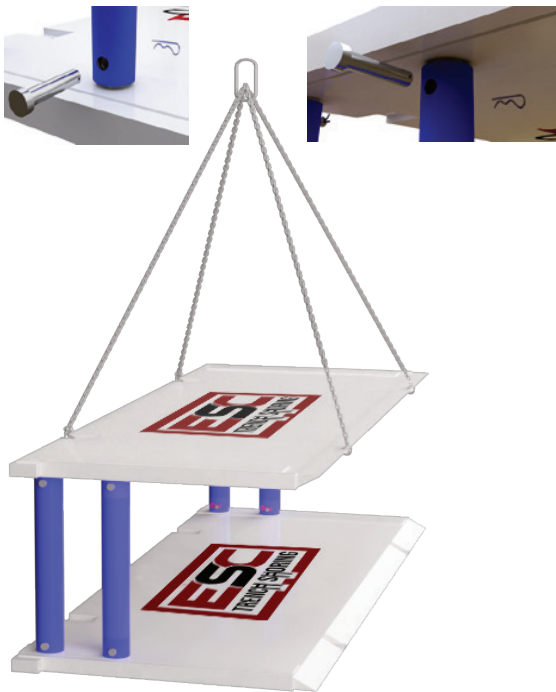


SAFETY TIPS

- ✓ Remember to inspect lifting points prior to every lifting operation and ensure that all personnel are well informed of the operation.
- ✓ Ensure all pins and retaining clips are correctly fitted.
- ✓ Use only certified lifting slings.
- ✓ Assemble on flat ground.

Assembly Guide

D. Place top panel, pins and R-clips.



E. Rotate shield.



F. Install completed shield on site.



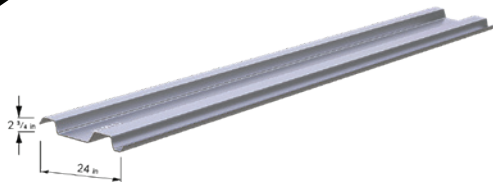
SAFETY TIPS

- ✓ Do not allow personnel to enter the box/shield while excavator is moving the trench shield/box.
- ✓ Always ensure the shield/box is evenly supported by the ground to avoid shield/box becoming unstable.
- ✓ Do not use box if panel, pins or spreaders are damaged.
- ✓ Use only components supplied by ESC.

Common Trench Sheets

ESC trench sheet products offer a highly efficient retention system for shallow excavations. ESC trench sheets can be used to support earth banks for the safety of construction workers, and are ideal for reinforcement of waterway banks and services trenches. The strength, speed and flexibility of light trench sheets makes them ideal for all forms of temporary and permanent works. The trench sheets also offer good durability and ease of installation and extraction allows sustainable construction.

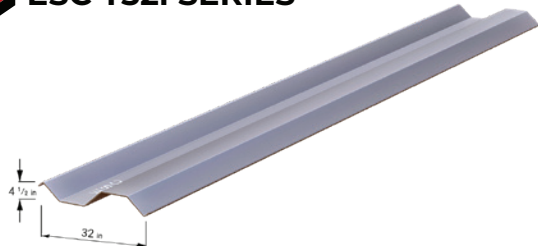
ESC T24i SERIES



ESC T30i SERIES

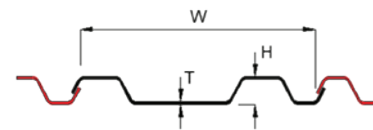


ESC T32i SERIES



TECHNICAL SPECIFICATIONS

SECTION	WIDTH	HEIGHT	THICKNESS	UNIT WEIGHT		SECTION MODULUS	MOMENT OF INERTIA
	W	H	T	Section	Wall		
	in	in	in	lb/ft	lb/ft ²	in ³	in ⁴

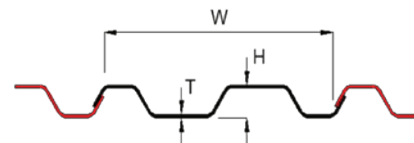


ESC-T24iA	23 3/4	2 3/4	3/16	18.8	9.5	4.3	5.8
-----------	--------	-------	------	------	-----	-----	-----

ESC-T24iB	23 3/4	2 3/4	1/4	25.1	12.7	5.6	7.6
-----------	--------	-------	-----	------	------	-----	-----

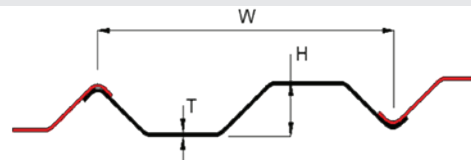
ESC-T24iC	23 3/4	2 7/8	5/16	31.7	16.1	6.9	10.0
-----------	--------	-------	------	------	------	-----	------

ESC-T24iD	24	6 1/4	3/8	42.6	21.2	17.5	55.2
-----------	----	-------	-----	------	------	------	------



ESC-T30iA	30	3 3/4	1/4	33.5	13.4	10.2	18.4
-----------	----	-------	-----	------	------	------	------

ESC-T30iB	30	3 3/4	3/8	50.3	20.1	13.9	26.1
-----------	----	-------	-----	------	------	------	------



ESC-T32i	32	4 1/2	3/8	50.2	18.8	17.3	38.1
----------	----	-------	-----	------	------	------	------



ESC Bedding Boxes

ESC Trench Shoring bedding boxes offer you a convenient way to manage your trench bedding materials wisely. Utilizing a bedding box allows you to move the material quickly and efficiently to and from the trench precisely when and where needed.

ESC heavy-duty bedding boxes are reinforced to provide you with durability and reusability to ensure high performance on every job.

ESC bedding boxes can accommodate all of your multipurpose construction requirements. Made with sturdy high tensile steel, well equipped to suit your every project need, maximizing efficiency at the job site.

Features

- ✓ Heavy-duty design;
- ✓ Welded lifting bar;
- ✓ Lifting lugs;
- ✓ Stackable;

Benefits

- ✓ Production safety;
- ✓ Eliminates project delays;
- ✓ Reduces costly labors;
- ✓ Multipurpose construction use;

Options

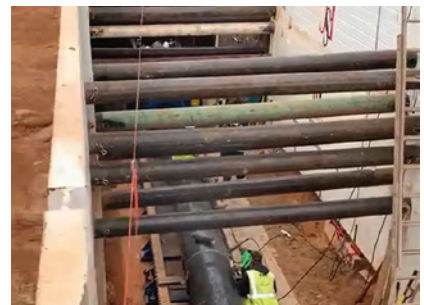
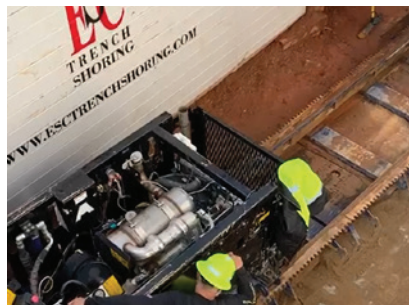
- ✓ Adjustable lift bar;
- ✓ Wheel Kit;
- ✓ Custom Sizes and Designs Available;

TECHNICAL SPECIFICATIONS										
MODEL NUMBER	OUTSIDE DIMENSION (in)			ID	WEIGHT	CAPACITY	INSIDE DIMENSIONS (in)			GRAB BAR
	LENGTH	WIDTH	HEIGHT	in	lbs	cu. yds.	SIDE WALL	END WALL	BASE PLATE	in
ESC-BB-2	8' 3"	4' 0"	3' 0"	40"	2,340	2	1/4"	3/8"	3/8"	5" SCH 80
ESC-BB-3	10' 0"	4' 9"	3' 6"	42"	2,730	3	1/4"	3/8"	3/8"	5" SCH 80
ESC-BB-5	13' 6"	5' 4"	3' 6"	54"	3,975	5	1/4"	3/8"	5/8"	6" SCH 80
ESC-BB-7	14' 6"	5' 9"	4' 0"	60"	5,100	7	1/4"	3/8"	5/8"	8" SCH 80
ESC-BB-7W	13' 4"	7' 0"	4' 0"	72"	5,850	7	1/4"	3/8"	5/8"	8" SCH 80
ESC-BB-9	15' 6"	6' 7"	4' 0"	69"	5,990	9	1/4"	3/8"	5/8"	8" SCH 80
ESC-BB-12	18' 6"	7' 2"	4' 0"	76"	8,700	12	1/2"	1/2"	3/4"	8" SCH 120



**BUILT FOR THE TOUGHEST
WORKING CONDITIONS**

Product & Project Photos



ESC Product Catalogs

You may download all our product catalogs on this <https://www.escsteel.com/construction-product-catalogs> or request via email: info@escsteel.com. If you are viewing online, you may click on the image below to download.



ESC Capability Statement



Marine & Foundation Piling Catalog



Vinyl Sheet Pile Catalog



Vinyl Sheet Pile Installation Guide



Sheet Pile Installation Procedures



Steel Structures Brochure



Marine Mooring Bollards Catalog



Port & Offshore Structures
Capability Statement



Marine Fender Catalog



Project Case Study - Book I



Project Case Study - Book II



Project Case Study - Book III



Combination Walls Project
Case Study



Steel Pipes Projects
Case Study

**ESC CAPABILITY
STATEMENT**

**MARINE & FOUNDATION
PILING CATALOG**

**SHEET PILE
INSTALLATION
PROCEDURES**

**VINYL SHEET PILE
CATALOG**

**VINYL SHEET PILE
INSTALLATION GUIDE**

**STEEL STRUCTURES
CAPABILITIES**

**MOORING BOLLARDS
CATALOG**

**MARINE FENDERS
CATALOG**

**PORTS & OFFSHORE
STRUCTURES**

**ESC PROJECT CASE
STUDIES**

**COMBINATION WALL
PROJECTS**

**STEEL PIPE PILING
PROJECTS**



A member of



ESC TRENCH SHORING, INC.

18805 W CATAWBA AVE, SUITE #207,
CORNELIUS, 28031, NC, USA

Charlotte Office - (Headquarters)

E don@esc trenchshoring.com
T +1 (980) 892 2486

E andrew@esc trenchshoring.com
T +1 (860) 965 3270

E bruceolson@esc trenchshoring.com
T +1 (704) 654 0321

Canada Office

E don@esc trenchshoring.com
T +1 (902) 442 0800

Para solicitudes en español, por favor contactar a

E samuel@esc trenchshoring.com
T +1(401) 206 8727

Sales & Distribution Yard

A 2185 Salisbury Highway
Statesville, North Carolina, 28677, USA

Download the "ESC Group" App



/esc trenching



/esc-trench-shoring



@esc_trenchshoring



@ESCTrenching



ESC Group

WWW.ESCTRENCHSHORING.COM