

INTERLOCK/CLUTCH SEALANT



INSTALLATION GUIDE

Achieving water tightness of a sheet pile wall can be challenging, given the site conditions, difficulty in sealant applications, high interlock temperatures during driving and other factors. ESC has addressed these issues through its design and extensive experience and is willing to deliver both standard and tailored solutions to project requirements. Here is a full guide on the application and best practices for obtaining a water-tight interlock:



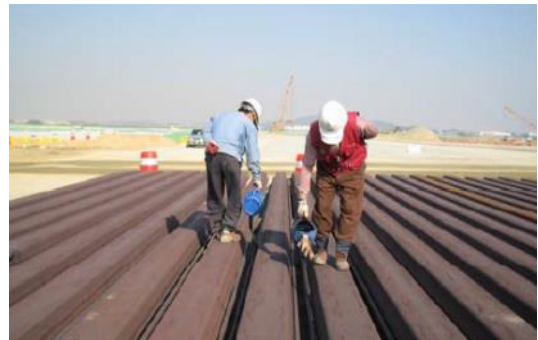
① Sheet piles have to be arranged level.



② Remove the dust or rust in the interlocks using an air compressor.



③ Attach small tape to the both sides to prevent the DPS-500 rolls down from interlock .



④ Pour DPS-500 using a watering pot in the interlocks.



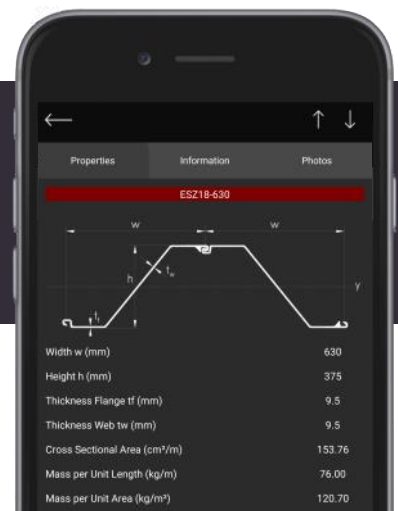
⑤ Drive the sheet piles after the drying the DPS-500 (after one day).



Get in Touch:

T +852 3956 1868
E engineering@escpile.com
W www.escpile.com
GLOBAL PILING SOLUTIONS

ESC App available now
Scan QR Code or search for "ESC Group" or click on the links below



Revision 0, Q3 2018

Disclaimer The information provided within this datasheet is for general information purposes only, without any warranty. ESC shall not be held responsible for any errors, omissions or misuse of any of the information provided. ESC disclaims any and all liability resulting from the ability or inability to use the information within this document. Anyone using the information contained does so at their own risk. ESC shall not be held liable for any damages which includes any financial losses or incidental or consequential damages arising from the use of this information. The product range contained is liable to change without notice.