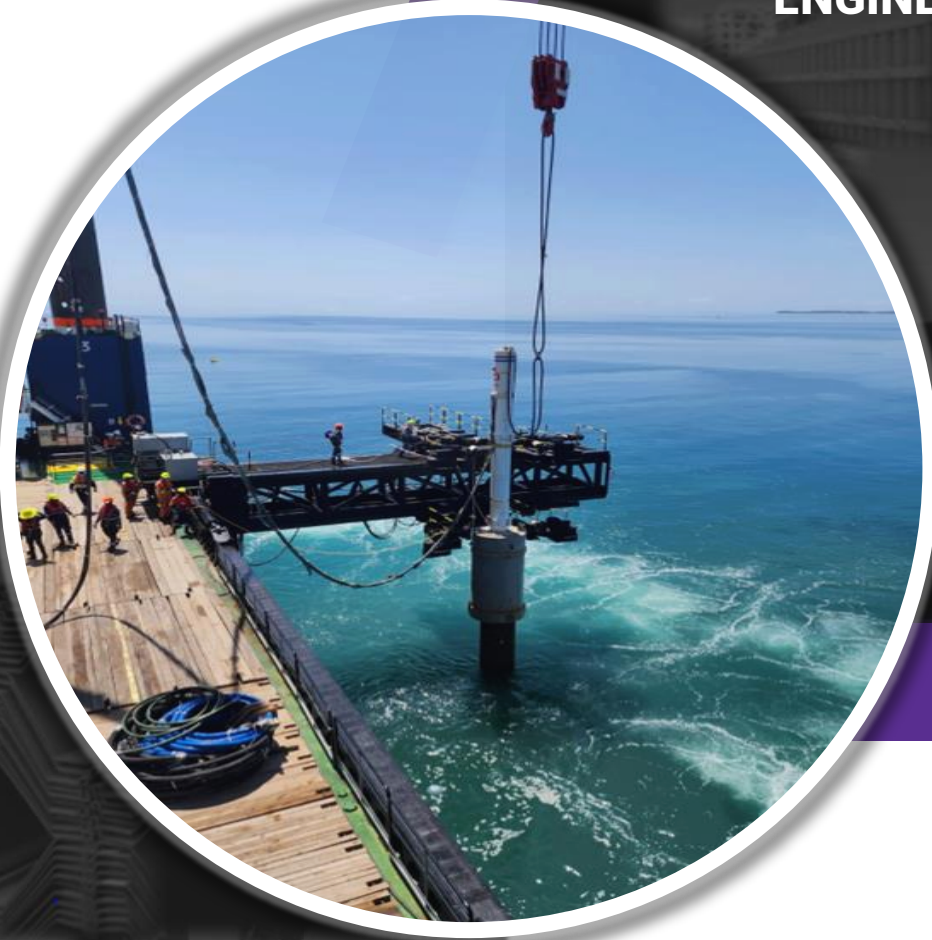


**DELIVERING GLOBAL
ENGINEERED SOLUTIONS
SINCE 1986**



GLOBAL CAPABILITY STATEMENT

2024 Edition

Steel Sheet Piles | Combination Walls | Pipe Piles | H Piles
Vinyl Sheet Piles | Tie Rod Systems | Piling Accessories
Marine Fenders & Bollards | Steel Structures | Connectors
Cathodic Protection | Trench Box | Corrosion Protection | Strutting System

INTRODUCTION

ESC GROUP

ESSENTIAL INFORMATION

Head Office Address	Acclime Offices, 17/F United Centre, 95 Queensway Admiralty Hong Kong
Middle East Office Address	P.O. Box 131355, Industrial Area City of Abu Dhabi, Mussafah, Abu Dhabi, UAE
Turnover of ESC Group up to date	USD 300,000,000 +
Trademarks	ESC & ESC PILE
Products	Sheet Piles, Tubular Piles, H Piles, Combi-walls, Tie Rods, Corrosion Protection, Structural Steel Sections, Trench Boxes, Clutches, Structural Materials & Others
ASIA DIVISION	ESC Pile Trading (Shanghai) ESC Asia Limited
Paid Up Capital	USD 1,150,000
MIDDLE EAST DIVISION	ESC Al Sharafi Steel LLC ESC Al Sharafi General Contracting—LLC
Paid Up Capital	DHS 5,300,000

CORPORATE CERTIFICATION

ESC has achieved and maintained ISO 9001:2015, ISO 14001:2015, ISO 45001:2018 certifications for both supply, design and installation scopes related to sheet piling and piling related products.



HISTORY OF ESC

The inception of ESC occurred in 1986, when the founding partners envisaged a wide profile sheet pile unlike other traditional sheet piles. ESC's first sheet pile was driven in 1986, in Magnetic Island in the Great Barrier Reef, Australia. Since then, ESC has grown into a global piling company with international locations in almost every continent of the world. ESC Sheet Piles have successfully been used in varying locations, site conditions and design configurations.



ABOUT ESC

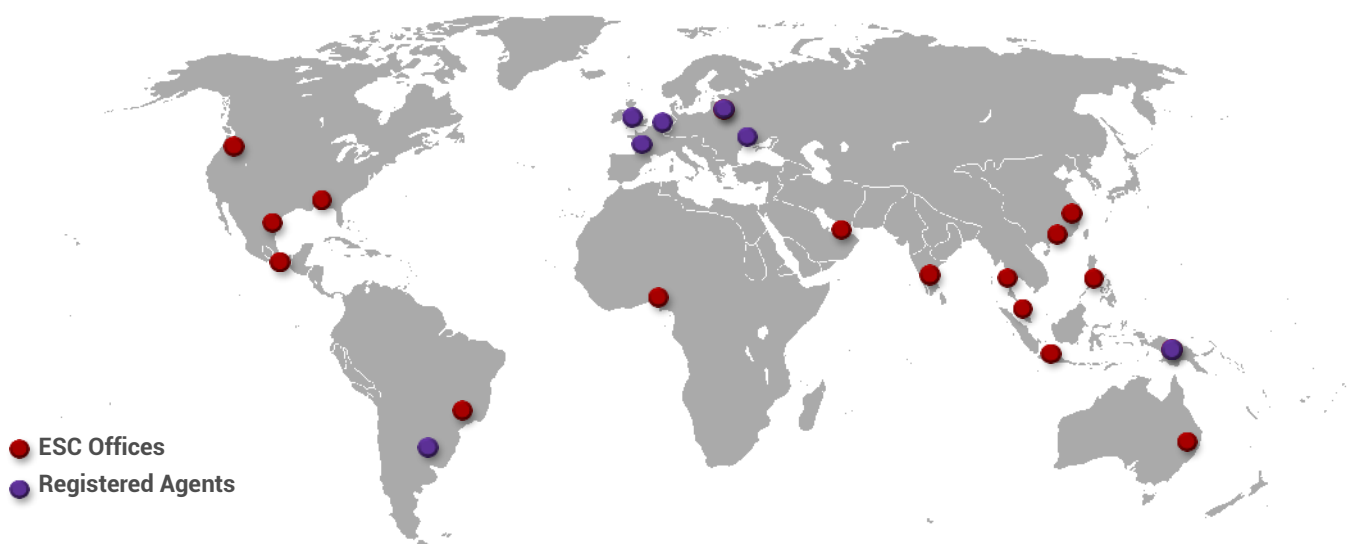
Further to simply supplying products we at ESC take a different approach to piling which is tailored to the customers' requirements. ESC believes that just supplying a product is insufficient and we strive to provide a level of support that is beyond customer expectations. This support ranges from general advice on the Client's options to full engineering support and design. ESC has amongst its divisions expertise in marine equipment, corrosion, trench safety and structural steel fabrication.

ESC products are produced & designed in accordance with the latest international standards as well as ISO 9000 Quality Management Systems. Other specific standards depending on the client's needs can be applied on request.

ESC has designed and supplied sheet piles to projects in every continent of the world, including Antarctica. In the last decade, ESC has successfully diversified into structural steel fabrication, synthetic sheet piling, cathodic protection, mooring bollards and marine fender systems to provide complete engineered solutions.



ESC GLOBAL LOCATIONS



GLOBAL NETWORK

ORGANIZATIONAL STRUCTURE

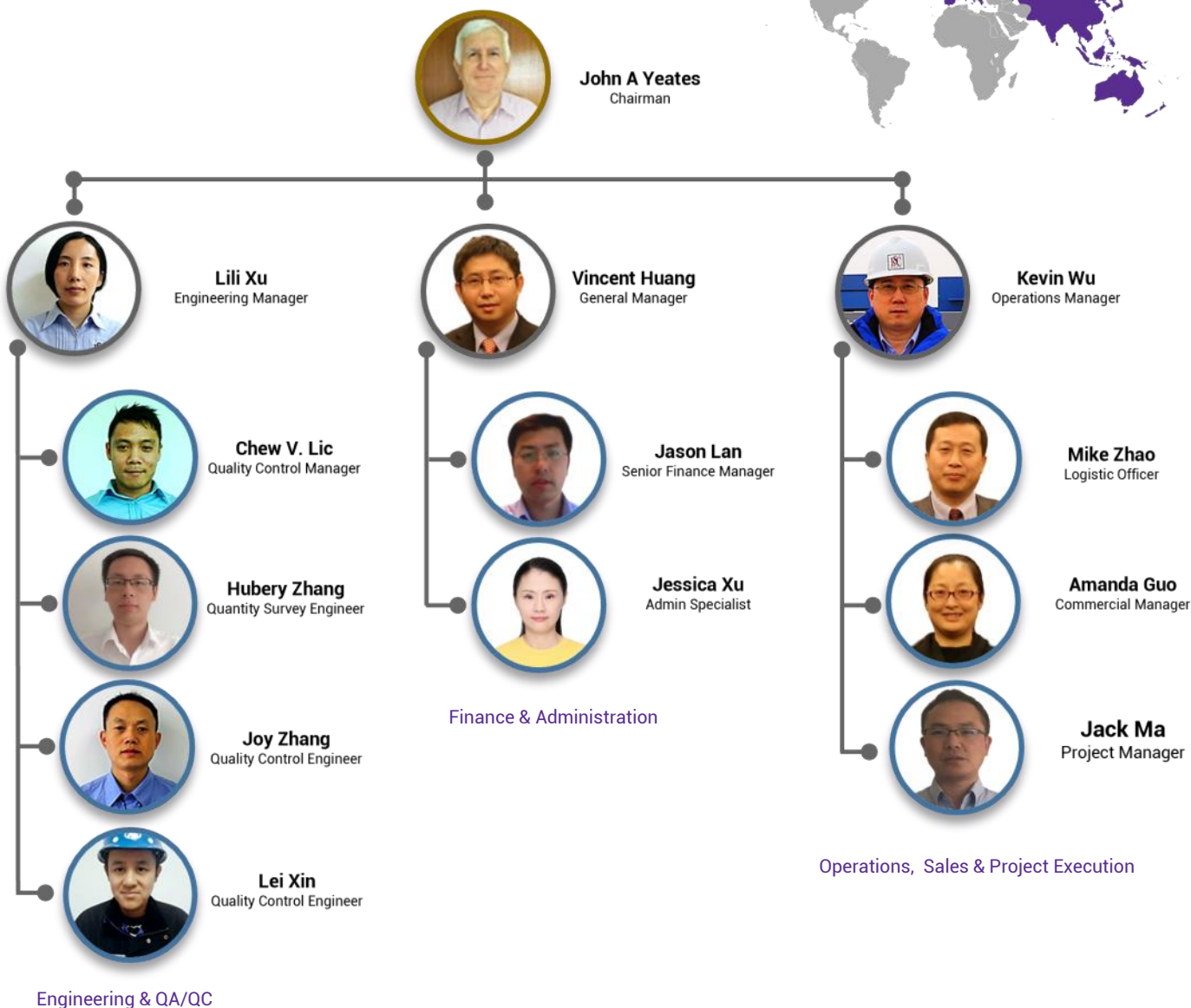
Regional Capabilities

In close coordination with ESC's global network of agents, each of ESC's regional locations caters to the global market offering an extensive range of capabilities. The table presented to the left is a general summary of the capabilities of each office.

	Hong Kong & China	UAE	USA	Mexico	Philippines	Malaysia (SE Asia)
Engineering Design	✓	✓	✓	✓	✓	✓
Technical Support	✓	✓	✓	✓	✓	✓
Fabrication	✓	✓	✓	✓		
Material Stocking	✓	✓	✓	✓		
Export Logistics	✓	✓	✓	✓		
Import Logistics	✓	✓	✓	✓	✓	✓
Installation		✓				

Asia Pacific

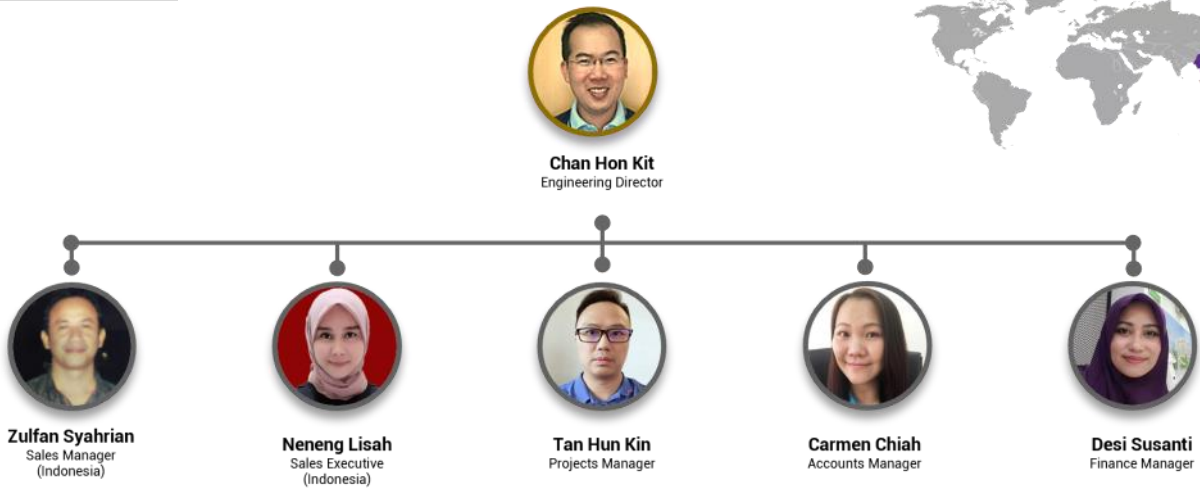
Regional Market:





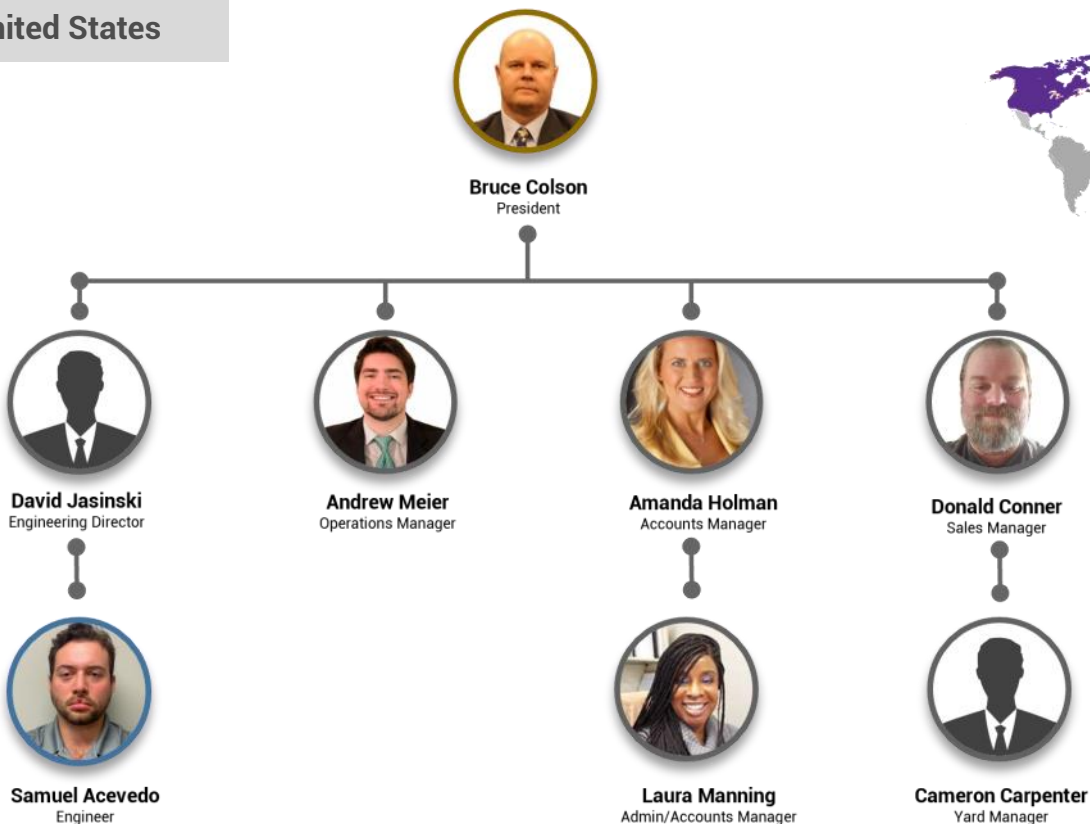
Southeast Asia

Regional Market:



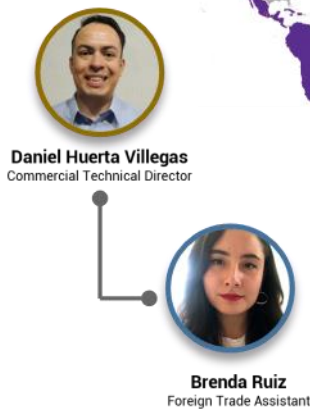
United States

Regional



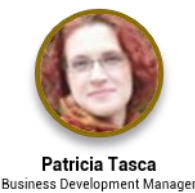
Mexico

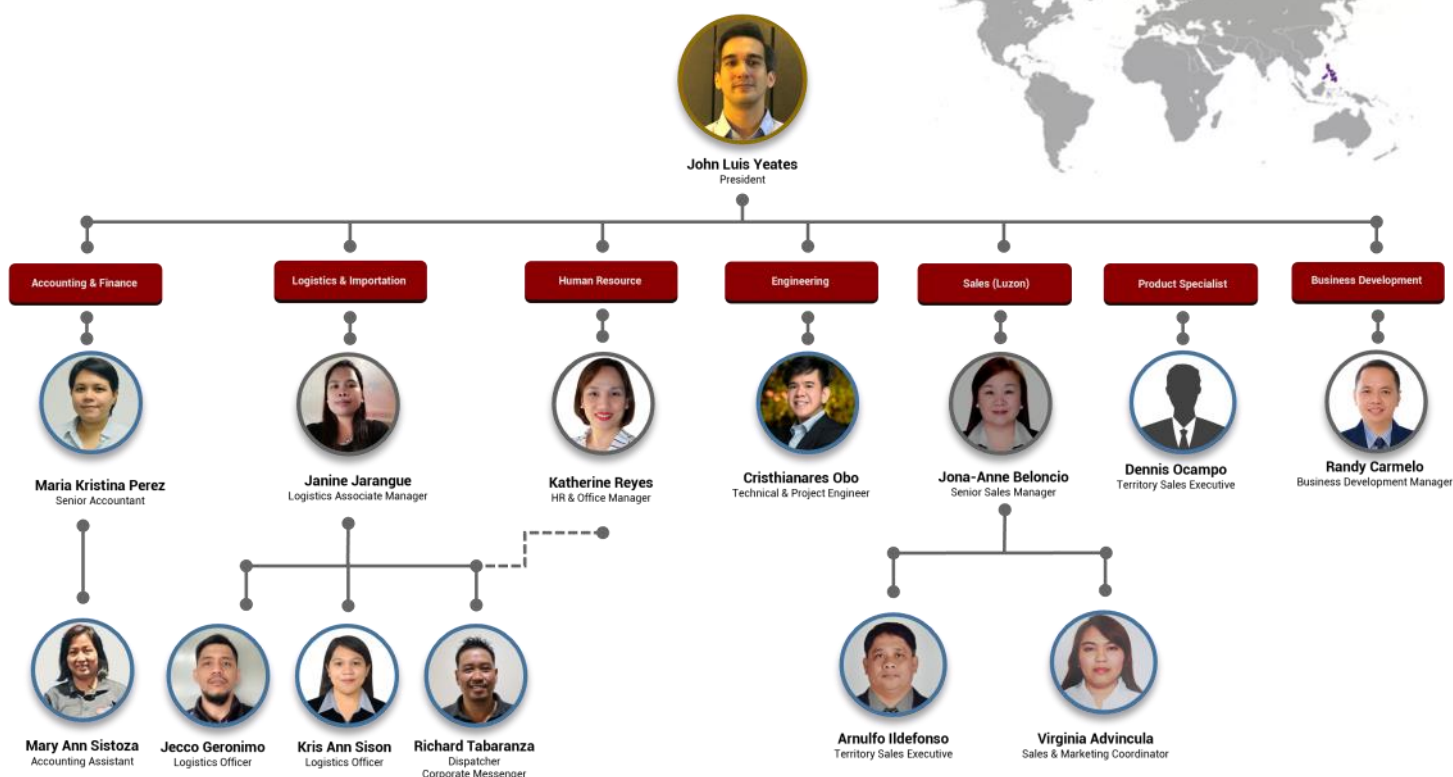
Regional Market:



Brazil

Regional Market:





PRODUCT LINE

CAPABILITIES

ESC offers world class piling products and structural steel fabrications for a range of industries. With a large and flexible production capacity spanning in several locations around the world, ESC is well poised to deliver economical, innovate, timely products with excellent quality. Below is a summary table of ESC's production capacities for different products.

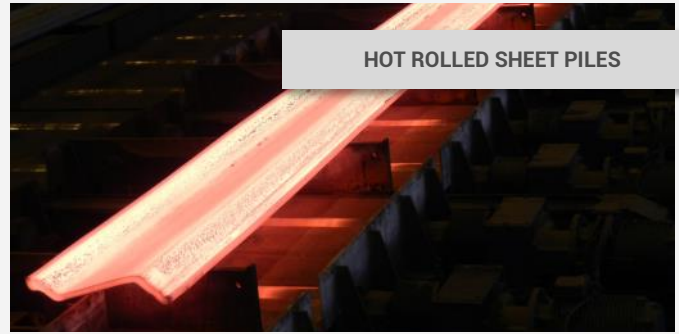
	Forming Process	Max Size	Thickness Range	Length	Steel Grades (Yield Strength)	Production Capacity
Sheet Piles	Hot Rolling	750mm width	8.5 to 27.6mm	6 to 35m	240 to 430MPa	25,000mT/month
	Cold Rolling	800mm width	5.0 to 16.0mm	1 to 35m	235 to 430MPa	7,000 to 10,000 mT/month
	Cold Forming	1,600mm width	3.0 to 23.0mm	1 to 35m	235 to 430MPa	3,000 to 5,000 mT/month
Steel Pipes	LSAW	4.267m diameter	6.3 to 100.0mm	Max 100m	235 to 485MPa	>10,000mT/month
	SSAW	3.048m diameter	6.3 to 25.4mm	Max 100m	235 to 485MPa	>10,000mT/month
	ERW	0.61m diameter	1.8 to 12.0mm	Max 24m	235 to 485MPa	>10,000mT/month
Tie Rods	Various	140mm diameter	N/A	Max 18m	460 to 700MPa	1,500mT/month
Structural Steel Fabrication	Various	-	-	-	-	3,000mT/month

SHEET PILING

Utilising 3 main methods of steel forming, ESC is able to offer a range of both unique and standard sheet pile profiles. With over 400 sheet piles it's catalogue, ESC can offer a full range of strengths, sizes and lengths to serve a truly global market.



COLD ROLLED SHEET PILES



HOT ROLLED SHEET PILES



COLD FORMED SHEET PILES



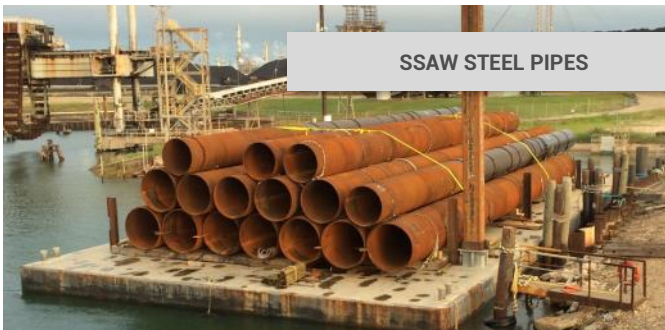
SSAB STEEL PIPES

STEEL PIPES

Utilising LSAW, SSAW and ERW Pipe forming methods, ESC has a vast capability of steel pipe production for a multitude of applications. These applications include foundation piling, combi wall king piles, marine dredging risers, gas risers and water pipes.

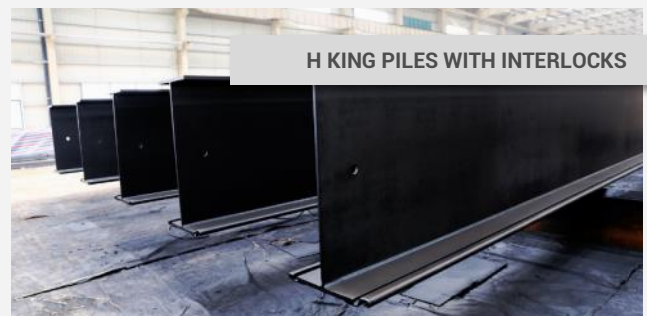


LSAW STEEL PIPES



COMBINED WALLS

Combined wall systems are formed with high strength king pile members utilised with ESC's wide range of sheet pile profiles as intermediate infills. ESC offers a wide range of Pipe, H, Box Pile sections in various grades, sizes and interlock configurations.



H KING PILES WITH INTERLOCKS



PIPE PILES WITH INTERLOCKS



FABRICATED BOX PILES



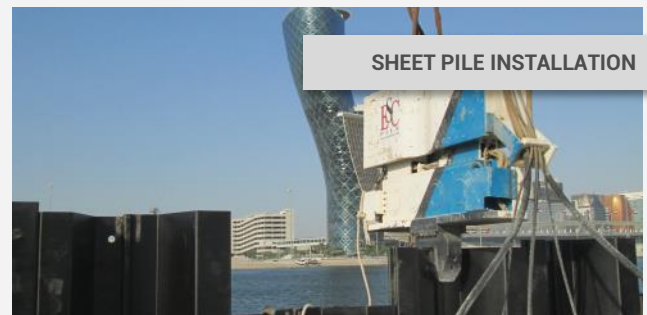
SHEET PILE INSTALLATION

INSTALLATION

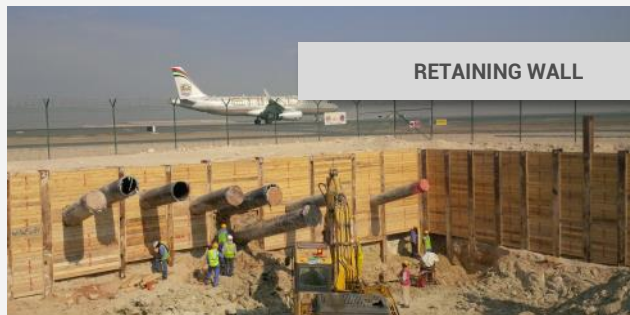
ESC UAE as part of the ESC Global Group have been involved in various infrastructure works and offer a comprehensive range of piling solutions from design, supply and execution of temporary as well as permanent retention works. The construction team together with the design engineers are well experienced to handle variable ground conditions to adopt suitable installation techniques and methods. ESC have the experience in working both on-shore and off-shore environments.



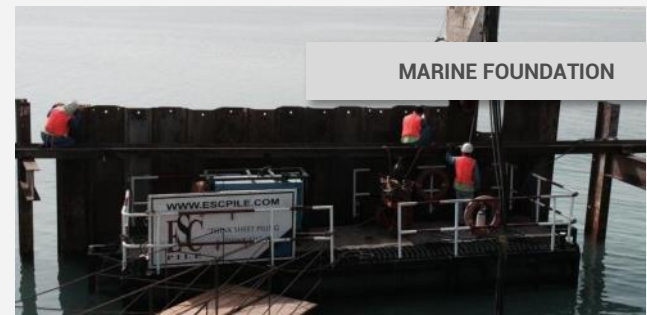
ABI EQUIPMENT TO PROJECT SITE



SHEET PILE INSTALLATION



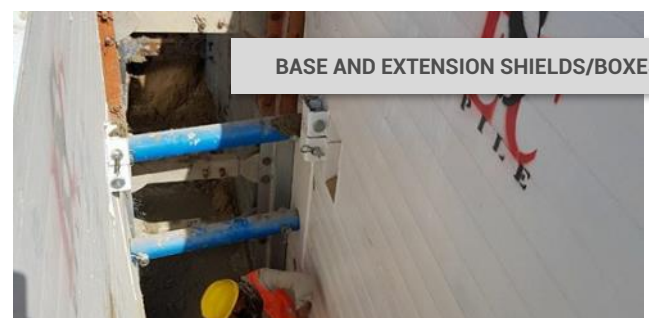
RETAINING WALL



MARINE FOUNDATION

TRENCH SHORING

ESC has fully developed its Trench Box /Trench Shield Series used as a two-sided excavation support system. It is a used as a temporary earth retaining structure which allows safe access to an excavation that has been cut vertically. Stability is ensured within the trench whilst providing a minimal excavation footprint for works to be carried out. This helps prevent any damage to nearby utilities and structures.



BASE AND EXTENSION SHIELDS/BOXES



SITE INSTALLATION



INSTALLED ON SITE



BRIDGE ASSEMBLIES

STRUCTURAL STEEL FABRICATION

Over the last 5 years, ESC has expanded to delivering high quality and economical structural steel fabrications to the global market. ESC utilises its highly skilled engineering and QA/QC team boasting international qualifications in quality assurance and control, welding inspection, painting inspection, NDT testing to provide exceptionally high quality structural steel fabrications.



OFFSHORE STRUCTURES



BUILDING STRUCTURE



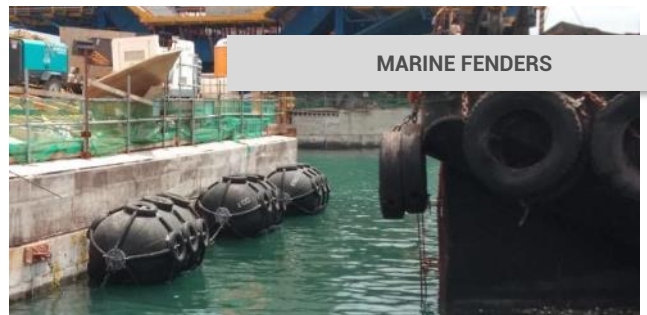
PRESSURE VESSELS



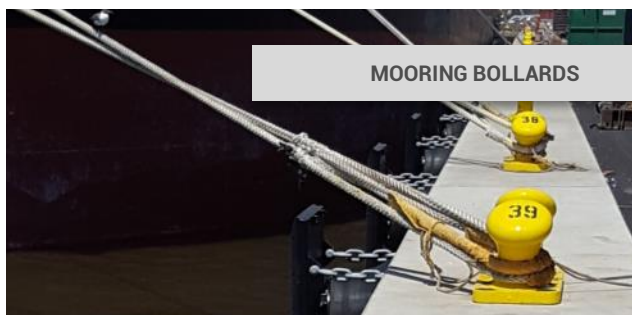
STEEL TOWERS

MARINE SYSTEMS

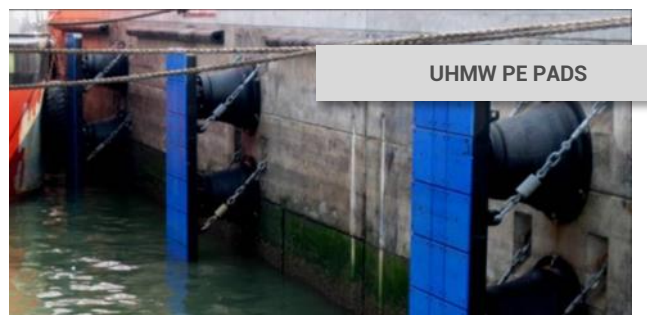
ESC has strategic partnerships with PIANC registered manufacturers with over 20 years of experience delivering marine system solutions to its valuable clients. ESC's global network offers marine furniture products such as mooring bollards, marine fenders and its accessorise.



MARINE FENDERS



MOORING BOLLARDS



UHMW PE PADS



VINYL SHEET PILES

OTHER FOUNDATION SOLUTION PRODUCTS

ESC is able to offer full foundation piling solutions with products such as: vinyl sheet piles, tie rods, pile guides, strutting system, corrosion protection and cathodic protection anodes.



TIE RODS



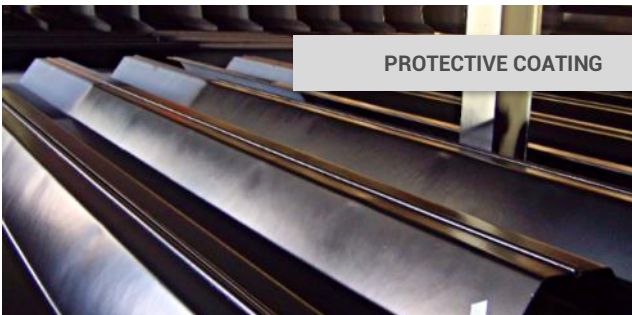
CATHODIC PROTECTION



SHEET PILING GUIDES



SURFACE PREPARATION



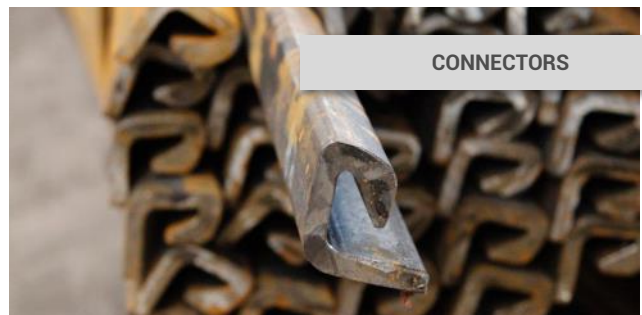
PROTECTIVE COATING



STRUTTING SYSTEM



SHEET PILE INTERLOCK SEALANTS



CONNECTORS



PILE DRIVING SHOE

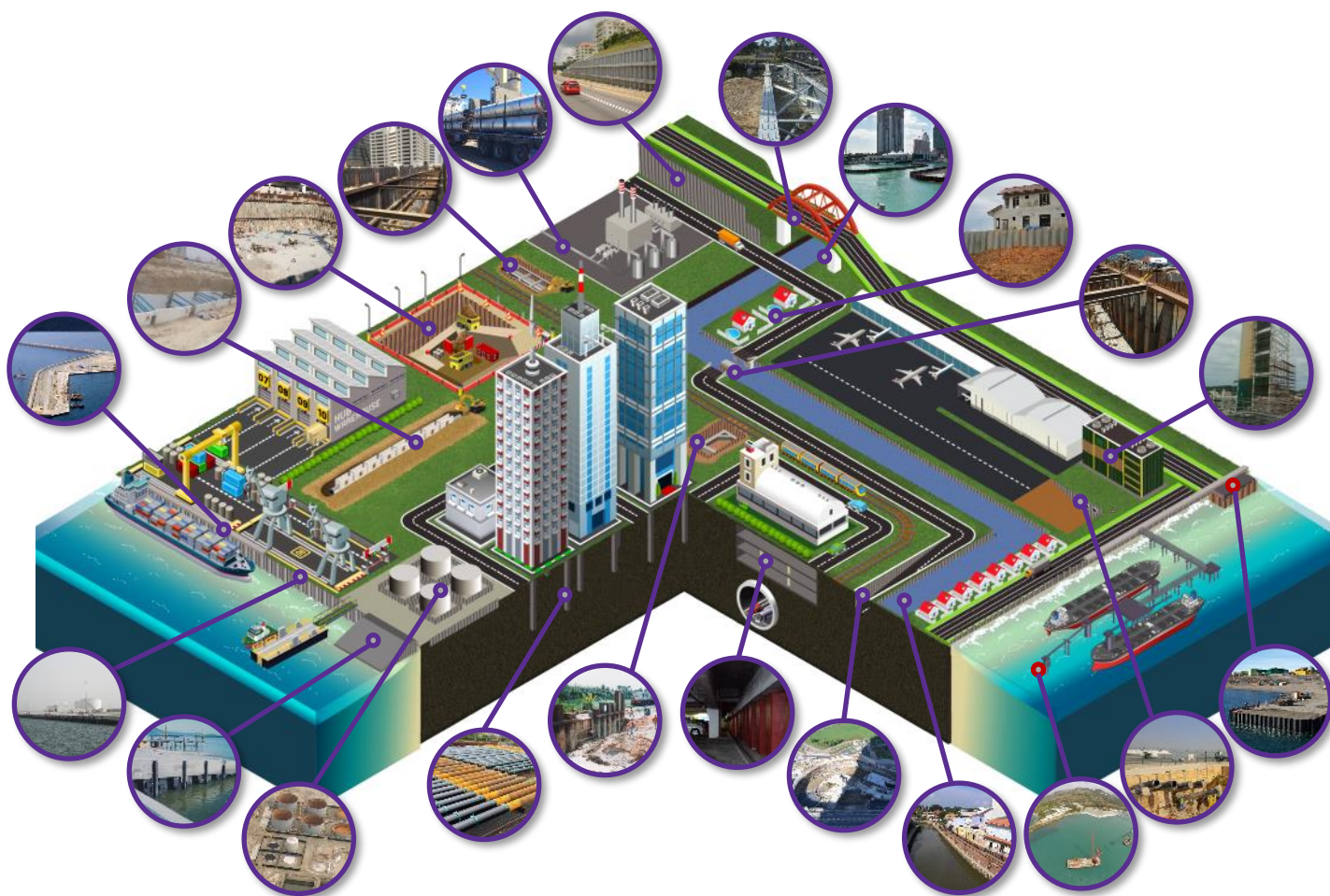


LIFTING HOLES

Product Applications

ESC's wide product range have been used in a multitude of applications in various global locations. ESC typically supplies a large range of products per project. The figure below contains both an isometric illustration of some of the applications with a callout showcasing one of ESC's global projects. Some typical project applications include:

- Ports, Piers, Harbours & Jetties
- Rivers & Waterways
- Basement & Underground Parking Construction
- Bridge Abutments & Bridge Structural Steel Components
- Temporary Excavations
- Shoring for safe excavation works
- Slope Protection
- Storm Protection
- Water-tight dry excavations in water
- Steel Building Components
- Offshore & Onshore Risers
- Offshore Steel Structures - Pontoons, headstock, Dolphins, Gangways



Past Projects - Countries Supplied



- Antarctica
- Afghanistan
- Argentina
- American Samoa
- Australia
- Bahrain
- Bangladesh
- Belgium
- Brunei
- Canada
- Cambodia
- Colombia
- Chile
- China
- Dominican Republic
- Djibouti
- Denmark
- Egypt
- Estonia
- Falkland Islands
- Haiti
- Hong Kong
- India
- Indonesia
- Iraq
- Italy
- Jamaica
- Japan
- Jordan
- Kenya
- Kuwait
- Macau
- Malaysia
- Mexico
- Netherlands
- New Zealand
- Nigeria
- Papua New Guinea
- Philippines
- Qatar
- Rwanda
- Saudi Arabia
- Singapore
- Taiwan
- Tanzania
- Vanuatu
- United Arab Emirates
- United Kingdom
- United States
- Vanuatu
- Venezuela

ESC GLOBAL CONTACT LIST

CONTACT DETAILS

Australia, New Zealand & PNG

ESC Asia Limited

A Acclime Offices
17/F United Centre,
95 Queensway, Admiralty
Hong Kong
E brucecolson@escpile.com
T +852 8198 2349
W www.escpile.com

Argentina, Paraguay & Uruguay

Cimtronic Design & Engineering

A Vedia 144, 5th Floor, Office 2
(C1429EIB) Nuñez CABA, Argentina
E informes@cimtronic.com.ar
E fgallo@cimtronic.com.ar
T +55 (31) 99976 4714
W www.escpile.com.br

Brazil

ESC Brazil

A Sao Paulo, SP, Brazil
E info@escpile.com.br
T +55-11-3170-8598
W www.escpile.com.br

China

ESC Trading (Shanghai) Co., Ltd.

A Rm 02, 5/F, No. 16, Gopher
Qibao T2 Building, Lane 399,
Xinlong Rd., Minhang District,
Shanghai, China
E vincenthuang@escpilechina.com
E brucecolson@escpilechina.com
T +86 21 3126 3501
T +86 21 3126 3502

Indonesia

PT ESC Steel Indonesia

A Graha Mustika Ratu, 5th Floor
#505, Jln. Jend Gatot Subroto
Kav. 74-75, Jakarta 12870
E zulfan@escpile.com
E chanhonkit@escpile.com
T +62 811 980 376
T +62 821 247 99 468
W www.escsteel.co.id

Malaysia, South East Asia & South Asia

ESC Steel Engineering Sdn Bhd

A F-1-2 Second Floor, Block F Suite 5
Setia Walk, Persiaran Wawasan,
Pusat Bandar Puchong
47160 Puchong, Selangor, Malaysia
E chanhonkit@escpile.com
T (Malaysia) +6012 428 5759
W www.escsteel.com.my

Mexico, Central & South America

Acerlum ESC SAPI de CV

A Loma de la Cañada No. 4,
Loma, Querétaro, México
CP 76060
E info@acerlum-esc.com
T +52 442 4711 500
W www.acerlum-esc.com

Middle East & Africa

ESC Middle East

A P.O. Box 131355, Industrial Area
City of Abu Dhabi, Mussafah,
Abu Dhabi, UAE
E escuae@escpileuae.com
E kevinashdown@escpileuae.com
T +971 2550 6188
F +971 2550 6112
W www.escpileuae.com

Netherlands

Europile B.V.

A Dam Bustersstraat 7 NL
4651 Sj Steenberg
Netherlands
E info@europile.nl
E esceuro@escpile.com
T +31 167 534 747
F +31 167 534 850
W www.europile.com

Nigeria

ESC Nigeria Ltd

A No.72, Apt 5, Lome Crescent,
Wuse Zone 7, Abuja,
Nigeria
E escnigeria@escpile.com
E bulkplus@gmail.com
T +234 7050 8888 22
F +234 8067 3905 66

Philippines

ESC Steel Philippines, Inc.

A 12V 12/F Cyber One Building,
11 Eastwood Avenue,
Eastwood City Cyberpark,
Bagumbayan, Quezon City,
Philippines
E manila@escsteelphil.com
E cebu@escsteelphil.com
T +632 8526 8839
M +63 917 202 7798
W www.escsteelphil.com

Russia

ESC-Beregststal Jsc

A 20 Ulitsa Lotsmanskaya
St Petersburg 190121
Russian Federation
E escrussia@escpile.com
E vovauliev@gmail.com
T +7812 495 0806
F +7812 325 9357

Ukraine

Mageba Ukraine LLC

A Gagarina Str.55, off 466
Cherkasy, 18000
Ukraine
E escukraine@escpile.com
E oleg@escpile.com
T +38 472 503661
F +38 472 503662

United States & Canada

ESC Steel LLC

Contact: Bruce Colson
A (North Carolina) 18805 W Catawba
Ave, Suite #207, Cornelius, 28031,
North Carolina, USA
E bruce@escsteel.com
T +1 (704) 654 0321
T +1 (980) 689 4388
T (Canada) +1 (902) 442 0800
W www.escsteel.com

United States & Canada

Sales & Distribution

A 5268 Davidson Highway
Concord, North Carolina
28027 USA

United Kingdom & Ireland

ESC Steel LLC

Contact: Bruce Colson
A 18805 W Catawba Ave,
Suite #207, Cornelius, 28031,
North Carolina, USA
E bruce@escsteel.com
T +1 (704) 654 0321
T +1 (980) 689 4388
W www.escsteel.com



ESC Global Headquarters

ESC Asia Limited

A Acclime Offices

17/F United Centre,

95 Queensway Admiralty

Hong Kong

E escglobal@escpile.com

T +852 8198 0239

 /escglobalgroup

 @escpilesteel

 /company/esc-global-group

 ESC Group

 www.escglobalgroup.com



AVAILABLE FOR ALL SMARTPHONES



DOWNLOAD THE ESC GROUP APP