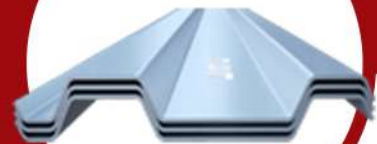




DELIVERING **TRENCH SHORING**
PRODUCTS TO THE GLOBAL MARKET

WWW.ESCSTEEL.COM.MY
WWW.ESCSTEEL.CO.ID



A member of:



TRENCH SHORING CATALOG

2022 Edition



ESC TRENCH SHORING, INC.

ESC has fully developed its Trench Shield Series (also known as Trench Boxes)

A two-sided, high-quality and economical excavation support system that provides a safe working environment in trenches up to 40 feet deep.

ESC's trench shields are a heavy duty and robust product designed and

manufactured in compliance with both National and International Standards.

All shields are certified by third party professional engineers, following the guidelines and recommendations of NAXSA (North American Excavation

Shoring Association) and comply with all OSHA Standards.

ESC trench shields are available for sale or rent.

Table Of **CONTENTS**

All About Trench Shoring	04
ESC Trench Shields Series	06
Manhole Trench Shield Series	12
Tapping Boxes	13
Aluminum Trench Shields	14
Spreader/Strut Solutions	16
Trench Shields Assembly Guide	17
Bedding Boxes	19
Common Trench Sheets	20
Product & Project Photos	21
ESC Product Catalogs	23

All About Trench Shoring

The ESC trench shield product range is specifically designed to cater to the unique requirements of the US and North American construction practices, and has been verified and certified by a third-party professional Engineer in the USA.

Features

- ✓ Designed & manufactured in accordance with OSHA 29 CFR 1926.650, 29 CFR 1926.651 and CFR 1926.652, Sub-part P, Excavations.
- ✓ 3rd party product certificates available for all products.
- ✓ Heavy duty robust design.
- ✓ Flat pack delivery.
- ✓ Fixed or adjustable spreaders available in any required length.
- ✓ Custom box sizes are available.
- ✓ Follow NAXSA - Approved shoring shield Tab Data Sheet.
- ✓ All TSB Series panels are fully welded for maximum strength. No stitch welds or spot welds used.
- ✓ 3/4" standard push pads.
- ✓ Reinforced knife edge supplied as standard on 8ft and 10ft height shields. 4ft and 6ft shields supplied with flat bottoms as standard.
- ✓ Knife edge and flat bottom interchangeable on request.

Options

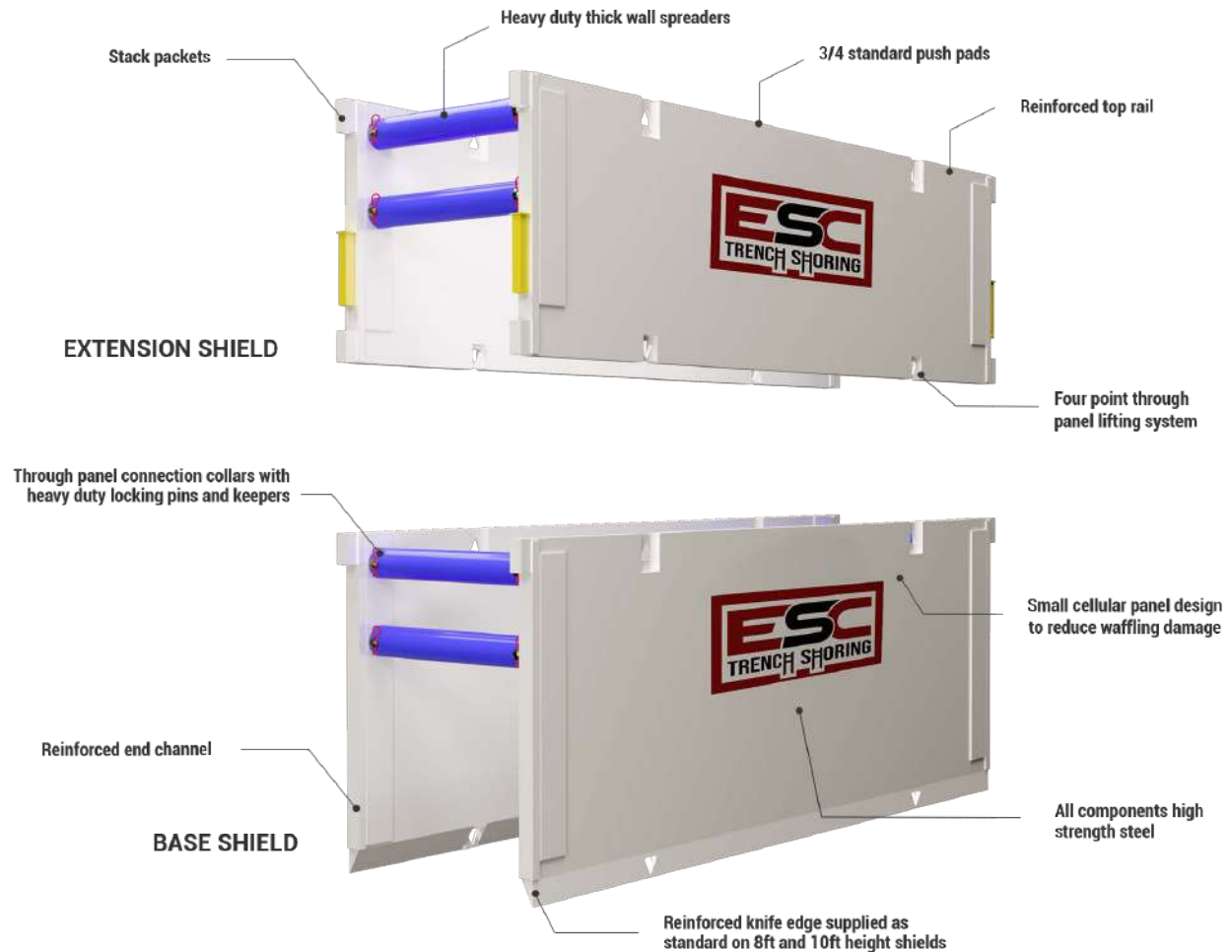
- ✓ Additional Stack pockets.
- ✓ Fifth lower spreader.
- ✓ Pulling Lugs.

Safety Guide

- ✓ Soil type to be determined by qualified competent person.
- ✓ Assembly as per ESC procedures.
- ✓ As member of NAXSA (North American Excavation Shoring Association), ESC adheres to all industry norms and regulations.



ESC TRENCH SHIELD



BUILT TO LAST
ROBUST CELLULAR DESIGN



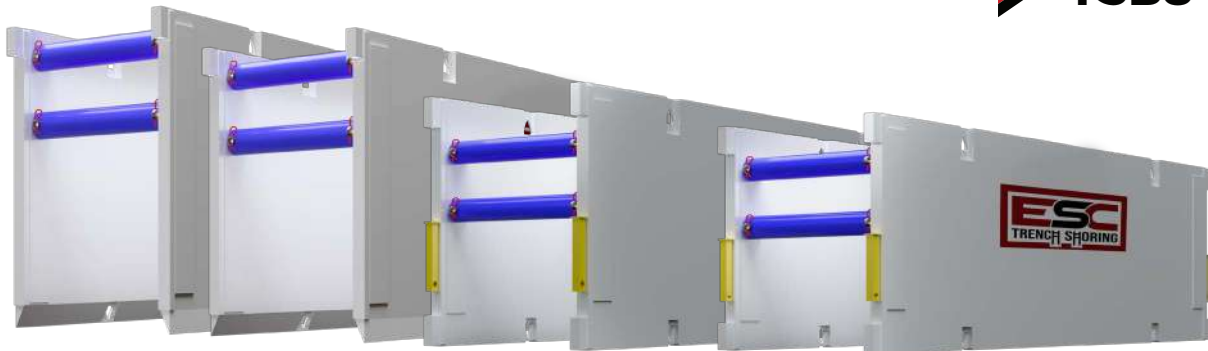
 **TSB4**

 **TSX4** 

 **TSB6**

 **TSX6** 

 **TSB8**



ESC Trench Shield Series

ESC's trench shoring product line comprises of 4ft, 6ft, 8ft and 10ft panel heights and a range of panel lengths from 10ft to 24ft. Each panel size is available in 4", 6" or 8" thickness depending on the end user requirements. All the shields are stackable and may be used as extension shields to

achieve protection in deeper trench cuts.

Heavy duty spreaders are available in a variety of fixed lengths, or alternatively adjustable length spreaders may be used to achieve a range of excavation widths.

ESC

Trench Shield Series

4" TRENCH SHIELD SERIES

TECHNICAL SPECIFICATIONS																
SERIES	HEIGHT BY LENGTH		WEIGHT		PIPE CLEARANCE		LENGTH BETWEEN SPREADERS		SHIELD CAPACITY		MAX EXCAVATION DEPTH					
	H X L		(2 x panels)		CH		CL				B-45 Soil		C-60 Soil		C-80 Soil	
	ft	m	lb	kg	in	mm	ft	m	psf	kPa	ft	m	ft	m	ft	m
TSB4-410	4 x 10	1.2 x 3.0	2992	1357	18	457	7'11"	2.41	4486	215	40	12.2	40	12.2	30	9.1
TSB4-412	4 x 12	1.2 x 3.7	3402	1543	18	457	9'11"	3.02	2871	137	40	12.2	40	12.2	30	9.1
TSB4-416	4 x 16	1.2 x 4.9	4221	1915	18	457	13'11"	4.24	1465	70	33	10.1	25	7.6	19	5.8
TSB4-420	4 x 20	1.2 x 6.1	5665	2570	18	457	17'11"	5.46	1053	50	24	7.3	18	5.5	14	4.3
TSB4-610	6 X 10	1.8 x 3.0	4074	1848	40	1016	7'11"	2.41	3000	144	40	12.2	40	12.2	30	9.1
TSB4-612	6 x 12	1.8 x 3.7	4594	2084	40	1016	9'11"	3.02	2748	132	40	12.2	40	12.2	30	9.1
TSB4-616	6 x 16	1.8 x 4.9	5738	2603	40	1016	13'11"	4.24	1402	67	33	10.1	25	7.6	20	6.1
TSB4-620	6 x 20	1.8 x 6.1	7871	3570	40	1016	17'11"	5.46	1020	49	24	7.3	19	5.8	15	4.6
TSB4-810	8 x 10	2.4 x 3.0	4906	2225	60	1524	7'11"	2.41	2150	103	40	12.2	39	11.9	30	9.1
TSB4-812	8 x 12	2.4 x 3.7	5627	2552	60	1524	9'11"	3.02	1780	85	40	12.2	32	9.8	25	7.6
TSB4-816	8 x 16	2.4 x 4.9	7068	3206	60	1524	13'11"	4.24	1334	64	40	12.2	25	7.6	20	6.1
TSB4-820	8 x 20	2.4 x 6.1	9923	4501	60	1524	17'11"	5.46	971	46	24	7.3	19	5.8	15	4.2

- ✓ All 4' and 6' shields can be used as Extension Shields.
- ✓ Depth ratings include consideration of surcharge load of 72 psf.
- ✓ As per NAXSA recommendations, depth of cut has been limited to 40ft for types A, B and C60 soil, and 30ft for C80 soil regardless of the capacity of the shield. If deeper cuts are required, it is recommended that a professional engineer is engaged to evaluate the site and soil conditions and specify a suitable trench shield or other shoring solution.

ESC X Trench Boxes Series

4" ESC X SERIES



TECHNICAL SPECIFICATIONS																
SERIES	HEIGHT BY LENGTH		WEIGHT		PIPE CLEARANCE		LENGTH BETWEEN SPREADERS		SHIELD CAPACITY		MAX EXCAVATION DEPTH					
	H X L		(2 x panels)		CH		CL				B-45 Soil		C-60 Soil		C-80 Soil	
	ft	m	lb	kg	in	mm	ft	m	psf	kPa	ft	m	ft	m	ft	m
TSX4-412	4 x 12	1.2 x 3.7	3300	1497	16	406	9'11"	3.02	3470	166	40	12.2	40	12.2	30	9.1
TSX4-416	4 x 16	1.2 x 4.9	4100	1860	16	406	13'11"	4.24	2156	103	40	12.2	34	10.4	26	7.9
TSX4-420	4 x 20	1.2 x 6.1	5000	2268	16	406	17'11"	5.18	1814	87	38	11.6	29	8.8	21	6.4
TSX4-424	4 x 24	1.2 x 7.3	5800	2631	16	406	21'11"	6.68	1158	55	24	7.3	18	5.5	13	4.0
TSX4-812	8 x 12	2.4 x 3.7	5800	2631	64	1626	9'11"	3.02	2592	124	40	12.2	40	12.2	30	9.1
TSX4-816	8 x 16	2.4 x 4.9	7200	3266	64	1626	13'11"	4.24	1643	79	34	10.4	26	7.9	19	5.8
TSX4-820	8 x 20	2.4 x 6.1	8700	3946	64	1626	17'11"	5.46	1234	59	25	7.6	19	5.8	14	4.3
TSX4-824	8 x 24	2.4 x 7.3	10100	4581	64	1626	21'11"	6.68	1204	58	24	7.3	18	5.5	14	4.3

Options

- ✓ Knife edge or flat bottom
- ✓ 5th spreader collar



6" TRENCH SHIELD SERIES

TECHNICAL SPECIFICATIONS																
SERIES	HEIGHT BY LENGTH		WEIGHT		PIPE CLEARANCE		LENGTH BETWEEN SPREADERS		SHIELD CAPACITY		MAX EXCAVATION DEPTH					
	H X L		(2 x panels)		CH		CL				B-45 Soil		C-60 Soil		C-80 Soil	
	ft	m	lb	kg	in	mm	ft	m	psf	kPa	ft	m	ft	m	ft	m
TSB6-416	4 x 16	1.2 x 4.9	4896	2221	18	457	13'11"	4.24	2518	121	40	12.2	40	12.2	30	9.1
TSB6-420	4 x 20	1.2 x 6.1	5857	2657	18	457	17'11"	5.46	1523	73	34	10.4	26	7.9	20	6.1
TSB6-424	4 x 24	1.2 x 7.3	7605	3450	18	457	21'11"	6.68	1181	57	27	8.2	20	6.1	16	4.9
TSB6-616	6 X 16	1.8 x 4.9	6532	2963	40	1016	13'11"	4.24	2358	113	40	12.2	40	12.2	30	9.1
TSB6-620	6 x 20	1.8 x 6.1	7842	3557	40	1016	17'11"	5.46	1426	68	33	10.1	26	7.9	20	6.1
TSB6-624	6 x 24	1.8 x 7.3	10411	4722	40	1016	21'11"	6.68	1127	54	26	7.9	21	6.4	16	4.9
TSB6-816	8 x 16	2.4 x 4.9	7922	3593	64	1626	13'11"	4.24	2030	97	40	12.2	37	11.3	28	8.5
TSB6-820	8 x 20	2.4 x 6.1	10897	4943	64	1626	17'11"	5.46	1573	75	37	11.3	29	8.8	23	7.0
TSB6-824	8 x 24	2.4 x 7.3	12762	5789	64	1626	21'11"	6.68	1053	50	26	7.9	20	6.1	16	4.9
TSB6-1016	10 x 16	3.0 x 4.9	9403	4265	76	1930	13'11"	4.24	1501	72	37	11.3	29	8.8	23	7.0
TSB6-1020	10 x 20	3.0 x 6.1	13330	6046	76	1930	17'11"	5.46	1338	64	33	10.1	26	7.9	21	6.4
TSB6-1024	10 x 24	3.0 x 7.3	15624	7087	76	1930	21'11"	6.68	1046	50	27	8.2	21	6.4	17	5.2

- ✓ All 4' and 6' shields can be used as Extension Shields.
- ✓ Depth ratings include consideration of surcharge load of 72 psf.
- ✓ As per NAXSA recommendations, depth of cut has been limited to 40ft for types A, B and C60 soil, and 30ft for C80 soil regardless of the capacity of the shield. If deeper cuts are required, it is recommended that a professional engineer is engaged to evaluate the site and soil conditions and specify a suitable trench shield or other shoring solution.

ESC X Trench Boxes Series

6" ESC X SERIES TRENCH BOX



TECHNICAL SPECIFICATIONS																
MODEL	HEIGHT BY LENGTH		WEIGHT		PIPE CLEARANCE		LENGTH BETWEEN SPREADERS		SHIELD CAPACITY		MAX EXCAVATION DEPTH					
	H X L		(2 x panels)		CH		CL				B-45 Soil		C-60 Soil		C-80 Soil	
	ft	m	lb	kg	in	mm	ft	m	psf	kPa	ft	m	ft	m	ft	m
TSX6-416	4 x 16	1.2 x 4.9	4300	1950	16	406	13'11"	4.24	3038	145	40	12.2	40	10.4	30	9.1
TSX6-420	4 x 20	1.2 x 6.1	5100	2313	16	406	17'11"	5.46	1911	91	40	12.2	30	9.1	22	6.7
TSX6-424	4 x 24	1.2 x 7.3	6000	2722	16	406	21'11"	6.68	1403	67	29	8.8	22	6.7	16	4.9
TSX6-820	8 x 20	2.4 x 6.1	9200	4173	64	1626	17'11"	5.46	1716	82	36	11.0	27	8.2	20	6.1
TSX6-1016	10 x 16	3.1 x 4.9	7600	3447	88	2235	13'11"	4.24	1522	73	32	9.8	24	7.3	18	5.5
TSX6-1020	10 x 20	3.1 x 6.1	11300	5126	88	2235	17'11"	5.46	1437	69	30	9.1	22	6.7	17	5.2
TSX6-1024	10 x 24	3.1 x 7.3	13100	5942	88	2235	21'11"	6.68	1351	65	28	8.5	21	6.4	16	4.9

Options

- ✓ Knife edge or flat bottom
- ✓ 5th spreader collar



8" TRENCH SHIELD SERIES

TECHNICAL SPECIFICATIONS																
SERIES	HEIGHT BY LENGTH		WEIGHT		PIPE CLEARANCE		LENGTH BETWEEN SPREADERS		SHIELD CAPACITY		MAX EXCAVATION DEPTH					
	H X L		(2 x panels)		CH		CL				B-45 Soil		C-60 Soil		C-80 Soil	
	ft	m	lb	kg	in	mm	ft	m	psf	kPa	ft	m	ft	m	ft	m
TSB8-416	4 x 16	1.2 x 4.9	5720	2595	18	457	13'11"	4.24	3878	186	40	12.2	40	12.2	30	9.1
TSB8-420	4 x 20	1.2 x 6.1	6876	3119	18	457	17'11"	5.46	2346	112	40	12.2	40	12.2	30	9.1
TSB8-424	4 x 24	1.2 x 7.3	8033	3644	18	457	21'11"	6.68	1571	75	35	10.7	27	8.2	21	6.4
TSB8-616	6 X 16	1.8 x 4.9	7563	3431	40	1016	13'11"	4.24	3150	151	40	12.2	40	12.2	30	9.1
TSB8-620	6 x 20	1.8 x 6.1	9119	4136	40	1016	17'11"	5.46	2172	104	40	12.2	38	11.6	29	8.8
TSB8-624	6 x 24	1.8 x 7.3	10676	4843	40	1016	21'11"	6.68	1454	70	34	10.4	26	7.9	20	6.1
TSB8-816	8 x 16	2.4 x 4.9	9175	4162	64	1626	13'11"	4.24	2030	97	40	12.2	37	11.3	28	8.5
TSB8-820	8 x 20	2.4 x 6.1	12380	5615	64	1626	17'11"	5.46	1620	78	38	11.6	30	9.1	23	7.0
TSB8-824	8 x 24	2.4 x 7.3	14526	6589	64	1626	21'11"	6.68	1350	65	32	9.8	25	7.6	20	6.1
TSB8-1016	10 x 16	3.0 x 4.9	11252	5104	76	1930	13'11"	4.24	1680	80	40	12.2	32	9.8	25	7.6
TSB8-1020	10 x 20	3.0 x 6.1	13547	6145	76	1930	17'11"	5.46	1345	64	33	10.1	26	7.9	21	6.4
TSB8-1024	10 x 24	3.0 x 7.3	18142	8229	76	1930	21'11"	6.68	1120	54	28	8.5	22	6.7	18	5.5

- ✓ All 4' and 6' shields can be used as Extension Shields.
- ✓ Depth ratings include consideration of surcharge load of 72 psf.
- ✓ As per NAXSA recommendations, depth of cut has been limited to 40ft for types A, B and C60 soil, and 30ft for C80 soil regardless of the capacity of the shield. If deeper cuts are required, it is recommended that a professional engineer is engaged to evaluate the site and soil conditions and specify a suitable trench shield or other shoring solution.

ESC Trench Shield **Manhole Series**

4" MANHOLE SERIES

TECHNICAL SPECIFICATIONS																
SERIES	HEIGHT BY LENGTH		WEIGHT		PIPE CLEARANCE		L E N G T H BETWEEN SPREADERS		SHIELD CAPACITY		MAX EXCAVATION DEPTH					
	H X L		(2 x panels)		CH		CL				B-45 Soil		C-60 Soil		C-80 Soil	
	ft	m	lb	kg	in	mm	ft	m	psf	kPa	ft	m	ft	m	ft	m
MSB4-48	4 x 8	1.2 x 2.4	2826	1282	24	610	7'2"	2.20	2400	115	53	16.2	40	12.2	30	9.1
MSB4-410	4 x 10	1.2 x 3.1	3143	1426	24	610	9'2"	2.79	2400	115	53	16.2	40	12.2	30	9.1
MSB4-88	8 x 8	2.4 x 2.4	4672	2119	52	1321	7'2"	2.20	2100	101	47	14.3	35	10.7	25	7.6
MSB4-810	8 X 10	2.4 x 3.1	5358	2430	52	1321	9'2"	2.79	2100	101	47	14.3	35	10.7	25	7.6



ESC Manhole Boxes provide a four-wall shield for utmost worker safety. They are specially built for maintenance hole installations, tie-ins, and repair work. ESC Manhole Boxes offer the flexibility you need with the protection compliant with OSHA requirements. Manhole boxes can be used in combination with the standard trench shields for different applications.
.5" sch 80 spreaders



ESC X Series 4-Sided Manhole Boxes AND STACKERS

TECHNICAL SPECIFICATIONS												
MODEL	HEIGHT BY LENGTH		WEIGHT		SHIELD CAPACITY		MAX EXCAVATION DEPTH					
	H X L		(2 x panels)				B-45 Soil		C-60 Soil		C-80 Soil	
	ft	m	lb	kg	psf	kPa	ft	m	ft	m	ft	m
ESC-XTB4-810	8 x 10	1.2 x 3.1	6,000	2722	2304	110	40	12.19	37	11.3	27	8.2
ESC-XTB4-812	8 x 12	1.2x 3.7	6,600	2994	2,200	105	40	12.19	35	10.7	26	7.9
ESC-XTB4-410	4 x 10	2.4 x 3.1	3,000	1361	2,304	110	40	12.19	37	11.3	27	8.2
ESC-XTB4-412	4 x 12	2.4 x 3.7	3,300	1497	2,200	105	40	12.19	35	10.7	26	7.9

Options

- ✓ Optional knife edge or flat bottom
- ✓ Trapezoid cutouts 3' x 5'



ESC Aluminum Trench Shield Series

ESC Trench Shoring's ABX Aluminum Trench Shields are lightweight and high strength. Built from high grade tempered aluminum, ESC offer a standard range or can custom build a shield to suit your requirements.



Features & Benefits

- ✓ Certified by US Professional Engineer.
- ✓ Constructed from 6061-T6 Aluminum Alloy.
- ✓ 3" wall thickness.
- ✓ 4" steel spreader thickness.
- ✓ Custom lengths on request.
- ✓ Lifting lugs.
- ✓ Largest working range in the industry.
- ✓ Adjustable vertical height clearance.
- ✓ Lengths up to 16ft.
- ✓ 6ft and 8ft panel heights.
- ✓ Easy to install.
- ✓ Light weight.
- ✓ Ideal for minor construction activities such as routine maintenance work and basic repairs.

 **ABX3-6**

 **ABX3-8**



6' ALUMINUM TRENCH SHIELD SERIES

3" WALL

TECHNICAL SPECIFICATIONS																
SERIES	HEIGHT BY LENGTH		WEIGHT		PIPE CLEARANCE		LENGTH BETWEEN SPREADERS		SHIELD CAPACITY		MAX EXCAVATION DEPTH					
	H X L		(2 x panels)		CH		CL				B-45 Soil		C-60 Soil		C-80 Soil	
	ft	m	lb	kg	in	mm	ft	m	psf	kPa	ft	m	ft	m	ft	m
ABX3-68	6 x 8	2.1 x 2.7	1,031	468	34	864	6'2"	1.88	1404	67	25	7.6	20	6.1	18	5.5
ABX3-610	6 x 10	2.1 x 3.4	1,200	544	34	864	8'2"	2.49	1124	54	25	7.6	20	6.1	16	4.9
ABX3-612	6 x 12	2.1 x 4.1	1,369	621	34	864	10'2"	3.10	936	45	22	6.7	17	5.2	14	4.3
ABX3-614	6 x 14	2.1 x 4.8	1,538	698	34	864	12'2"	3.71	803	38	19	5.8	15	4.6	12	3.7
ABX3-616	6 x 16	2.1 x 5.5	1,707	774	34	864	14'2"	4.32	634	30	15	4.6	12	3.7	10	3.0

8' ALUMINUM TRENCH SHIELD SERIES

3" WALL

TECHNICAL SPECIFICATIONS																
SERIES	HEIGHT BY LENGTH		WEIGHT		PIPE CLEARANCE		LENGTH BETWEEN SPREADERS		SHIELD CAPACITY		MAX EXCAVATION DEPTH					
	H X L		(2 x panels)		CH		CL				B-45 Soil		C-60 Soil		C-80 Soil	
	ft	m	lb	kg	in	mm	ft	m	psf	kPa	ft	m	ft	m	ft	m
ABX3-88	8 x 8	2.7 x 2.7	1,371	622	40	1016	6'2"	1.88	1,229	59	25	7.6	20	6.1	18	5.5
ABX3-810	8 x 10	2.7 x 3.4	1,597	724	40	1016	8'2"	2.49	982	47	24	7.3	19	5.8	15	4.6
ABX3-812	8 x 12	2.7 x 4.1	1,823	827	40	1016	10'2"	3.10	819	39	21	6.4	16	4.9	13	4.0
ABX3-814	8 x 14	2.7 x 4.8	2,048	929	40	1016	12'2"	3.71	640	31	17	5.2	13	4.0	11	3.4
ABX3-816	8 x 16	2.7 x 5.5	2,274	1031	40	1016	14'2"	4.32	475	23	13	4.0	11	3.4	9	2.7

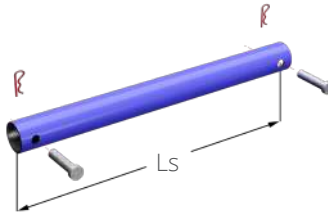


Spreader/Strut Solutions

Heavy duty spreaders are available in a variety of fixed lengths, or alternatively adjustable length spreaders may be used to achieve a range of excavation widths.



SN8 SERIES



SN8 SERIES FIXED LENGTH SPREADERS

TECHNICAL SPECIFICATIONS				
MODEL	LENGTH		WEIGHT	
	LS		(per spreader)*	
	in	mm	lb	kg
SN8-24	24	610	87	39
SN8-30	30	762	108	49
SN8-36	36	914	130	59
SN8-42	42	1067	152	69
SN8-48	48	1219	174	79
SN8-54	54	1372	195	88
SN8-60	60	1524	217	98
SN8-66	66	1676	239	108
SN8-72	72	1829	260	118
SN8-78	78	1981	282	128
SN8-84	84	2134	304	138
SN8-96	96	2438	347	157
SN8-108	108	2743	391	177
SN8-120	120	3048	434	197
SN8-144	144	3658	521	236
SN8-168	168	4267	607	275

AS SERIES



AS SERIES COMMON ADJUSTABLE STRUTS

AS SPREADER RANGE						
REFERENCE	MIN LENGTH		MAX LENGTH		WEIGHT	
					AS3 + AS4	
	in	mm	in	mm	lb	kg
AS-3036	30	762	36	914	78.59	35.65
AS-3648	36	914	48	1219	92.52	41.97
AS-4260	42	1067	60	1524	108.76	49.33
AS-5484	54	1372	84	2134	136.60	61.96
AS-6096	60	1524	96	2438	150.52	68.27
AS-72120	72	1898	120	3048	183.04	83.03
AS-84144	84	2134	144	3658	210.90	95.66

* **SN Series** spreaders are for standard steel trench shields; **AS Series** spreaders are for aluminum trench shields.

* spreader weights exclude weights of pins and keepers



ESC Trench Shield Assembly Guide

ESC Trench Shields are easy to assemble. It is advisable for users to strictly follow the procedures supplied by ESC.

A. Flat pack delivery.



B. Cut packing straps/lift top panel.



C. Erect 4 spreaders, insert pin and R-clip.

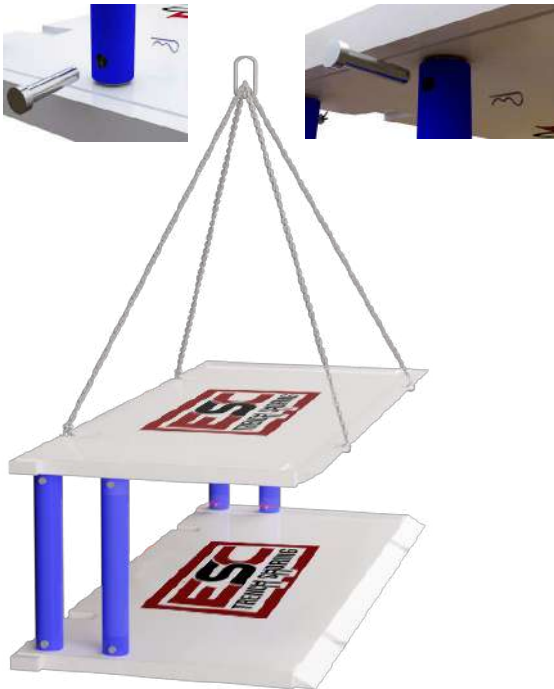


SAFETY TIPS

- ✓ Remember to inspect lifting points prior to every lifting operation and ensure that all personnel are well informed of the operation.
- ✓ Ensure all pins and retaining clips are correctly fitted.
- ✓ Use only certified lifting slings.
- ✓ Assemble on flat ground.

Assembly Guide

D. Place top panel, pins and R-clips.



E. Rotate shield.



F. Install completed shield on site.



SAFETY TIPS

- ✓ Do not allow personnel to enter the box/shield while excavator is moving the trench shield/box.
- ✓ Always ensure the shield/box is evenly supported by the ground to avoid shield/box becoming unstable.
- ✓ Do not use box if panel, pins or spreaders are damaged.
- ✓ Use only components supplied by ESC.

ESC Bedding Boxes

ESC Trench Shoring bedding boxes offer you a convenient way to manage your trench bedding materials wisely. Utilizing a bedding box allows you to move the material quickly and efficiently to and from the trench precisely when and where needed.

ESC heavy-duty bedding boxes are reinforced to provide you with durability and reusability to ensure high performance on every job.

ESC bedding boxes can accommodate all of your multipurpose construction requirements. Made with sturdy high tensile steel, well equipped to suit your every project need, maximizing efficiency at the job site.

Features

- ✓ Heavy-duty design;
- ✓ Welded lifting bar;
- ✓ Lifting lugs;
- ✓ Stackable;

Benefits

- ✓ Production safety;
- ✓ Eliminates project delays;
- ✓ Reduces costly labors;
- ✓ Multipurpose construction use;

Options

- ✓ Adjustable lift bar;
- ✓ Wheel Kit;
- ✓ Custom Sizes and Designs Available;

TECHNICAL SPECIFICATIONS								
MODEL NUMBER	OUTSIDE DIMENSION (in)			WEIGHT lbs	CAPACITY cu. yds.	INSIDE DIMENSIONS (in)		
	WIDTH	HEIGHT	LENGTH			WIDTH	HEIGHT	LENGTH
ESC-BB-5	51	44	156	4170	5	42	44	78
ESC-BB-7	72	48	180	4800	7	60	48	120
ESC-BB-9	84	48	192	5660	9	72	48	168
ESC-BB-12	104	44	192	7190	12	98	44	104



**BUILT FOR THE TOUGHEST
WORKING CONDITIONS**

Common Trench Sheets

ESC trench sheet products offer a highly efficient retention system for shallow excavations. ESC trench sheets can be used to support earth banks for the safety of construction workers, and are ideal for reinforcement of waterway banks and services trenches. The strength, speed and flexibility of light trench sheets makes them ideal for all forms of temporary and permanent works. The trench sheets also offer good durability and ease of installation and extraction allows sustainable construction.

ESC T24i SERIES



ESC T30i SERIES

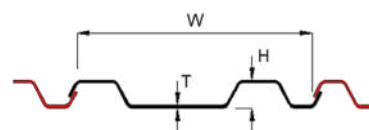


ESC T32i SERIES

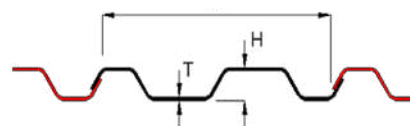


TECHNICAL SPECIFICATIONS

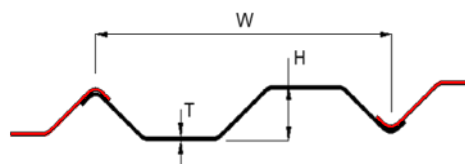
SECTION	WIDTH	HEIGHT	THICKNESS	UNIT WEIGHT		SECTION MODULUS	MOMENT OF INERTIA
	W	H	T	Section	Wall		
	in	in	in	lb/ft	lb/ft ²	in ³	in ⁴
	mm	mm	mm	kg/m	kg/m ²	cm ³	cm ⁴



ESC-T24iA	23 3/4 603.25	2 3/4 69.58	3/16 4.76	18.8 28.04	9.5 46.38	4.3 70.46	5.8 241.41
ESC-T24iB	23 3/4 603.25	2 3/4 69.58	1/4 6.35	25.1 37.35	12.7 62.01	5.6 91.77	7.6 316.34
ESC-T24iC	23 3/8 600.08	2 7/8 73.03	5/16 7.94	31.7 47.10	16.1 78.61	6.9 113.07	10.0 416.23



ESC-T30iA	30 762	3 3/4 95.25	1/4 6.35	33.5 49.85	13.4 65.42	10.2 167.15	18.4 765.87
ESC-T30iB	30 762	3 3/4 95.25	3/8 9.53	50.3 74.85	20.1 98.14	13.9 227.78	26.1 1,086.36



ESC-T32i	32 812.80	4 1/2 114.30	3/8 9.53	50.2 74.71	18.8 91.79	17.3 283.50	38.1 1,585.84
----------	--------------	-----------------	-------------	---------------	---------------	----------------	------------------

Product & Project Photos



Product & Project Photos



ESC Product Catalogs

You may download all our product catalogs on this <https://www.escsteel.com.my/other-product-catalogues> or request via email: chanhonkit@escpile.com. If you are viewing online, you may click on the image below to download.



ESC Capability Statement



Marine & Foundation Piling Catalog



Vinyl Sheet Pile Catalog



Vinyl Sheet Pile Installation Guide



Sheet Pile Installation Procedures



Steel Structures Brochure



Marine Mooring Bollards Catalog



Port & Offshore Structures
Capability Statement



Marine Fender Catalog



Project Case Study - Book I



Project Case Study - Book II



Project Case Study - Book III



Combination Walls Project
Case Study



Steel Pipes Projects
Case Study

**ESC CAPABILITY
STATEMENT**

**MARINE & FOUNDATION
PILING CATALOG**

**SHEET PILE
INSTALLATION
PROCEDURES**

**VINYL SHEET PILE
CATALOG**

**VINYL SHEET PILE
INSTALLATION GUIDE**

**STEEL STRUCTURES
CAPABILITIES**

**MOORING BOLLARDS
CATALOG**

**MARINE FENDERS
CATALOG**

**PORTS & OFFSHORE
STRUCTURES**

**ESC PROJECT CASE
STUDIES**

**COMBINATION WALL
PROJECTS**

**STEEL PIPE PILING
PROJECTS**



A member of



ESC STEEL ENGINEERING SDN BHD

F-1-2 Second Floor, Block F (Suite 5) Setia Walk,
Persiaran Wawasan, Pusat Bandar Puchong,
47160 Puchong Selangor, Malaysia

E chanhonkit@escpile.com
T +6012 428 5759

PT ESC STEEL INDONESIA

Graha Mustika Ratu, 5th Floor #505,
Jln. Jend Gatot Subroto Kav. 74-75,
Jakarta 12870, Indonesia

E zulfan@escpile.com
T +62 811 980 376



Download the "ESC Group" App



/esc trenching



/esc-trench-shoring



@esc_trenchshoring



@ESCTrenching



ESC Group