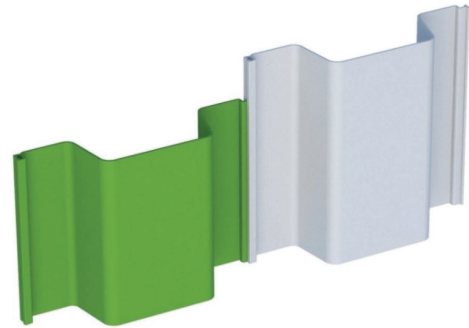
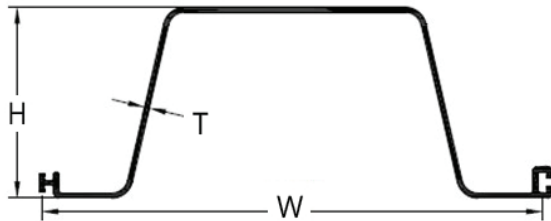


## ESC-GW610-7.2 VINYL BOX PROFILE



	IMPERIAL		METRIC	
	UNIT	VALUE	UNIT	VALUE
Section width (W)	in	23.9	mm	606
Section depth (H)	in	7.9	mm	200
Thickness (T)	in	0.28	mm	7.2
Cross-section area	in <sup>2</sup>	11.3	cm <sup>2</sup>	73.1
Section modulus	in <sup>3</sup> /ft	14.4	cm <sup>3</sup> /m	774
Moment of inertia	in <sup>4</sup> /ft	56.7	cm <sup>4</sup> /m	7743
Allowable moment	ft-kips/ft	3.8	kNm/m	17.0
Ultimate moment	ft-kips/ft	7.7	kNm/m	34.1
Ultimate stiffness	ibf-in <sup>2</sup> *10 <sup>6</sup> /ft	21.4	kNm <sup>2</sup> /m	201.3
Impact strength Charpy test	ft-lbs/ft <sup>2</sup>	≥ 14.3	kJ/m <sup>2</sup>	≥30
Weight Per Pile	lb/ft	7.19	kg/m	10.7
Weight Per Wall	lb/ft <sup>2</sup>	3.56	kg/m <sup>2</sup>	17.4

\*Safety factor = 2

Tolerance in accordance with the State technical assessment.

### ESC STEEL LLC



Pietrucha ESC Inc.

#### CHARLOTTE, NC

18805 W Catawba Ave, Suite #207, Cornelius,  
North Carolina 28031, USA

E : info@escvinylpile.com T : 980 689 4388

E : bruce@escvinylpile.com T : 704 654 0321

E : andrew@escvinylpile.com T : 860 965 3270

E : david@escvinylpile.com T : +1 849 395 5773 (WhatsApp Only)

#### FACTORY

2185 Salisbury Hwy, Statesville,  
North Carolina, 28677, USA

*Para solitudes en español, por favor contactar a*

E : samuel@escvinylpile.com T: 401 206 8727

