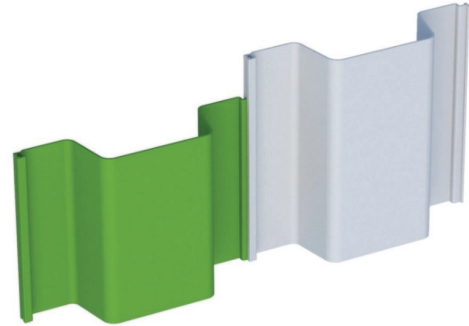
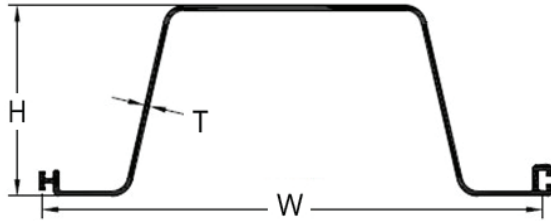


ESC-GW610-9.0 VINYL BOX PROFILE



	IMPERIAL		METRIC	
	UNIT	VALUE	UNIT	VALUE
Section width (W)	in	23.9	mm	606
Section depth (H)	in	9.1	mm	230
Thickness (T)	in	0.35	mm	9
Cross-section area	in ²	14.8	cm ²	95.3
Section modulus	in ³ /ft	20.6	cm ³ /m	1109
Moment of inertia	in ⁴ /ft	93.4	cm ⁴ /m	12758
Allowable moment	ft-kips/ft	5.5	kNm/m	24.4
Ultimate moment	ft-kips/ft	11	kNm/m	48.8
Ultimate stiffness	ibf-in ² *10 ⁶ /ft	35.2	kNm ² /m	331.7
Impact strength Charpy test	ft-lbs/ft ²	≥ 14.3	kJ/m ²	≥30
Weight Per Pile	lb/ft	9.14	kg/m	13.6
Weight Per Wall	lb/ft ²	4.64	kg/m ²	22.6

*Safety factor = 2

Tolerance in accordance with the State technical assessment.

ESC STEEL LLC



Pietrucha ESC Inc.

CHARLOTTE, NC

18805 W Catawba Ave, Suite #207, Cornelius,
North Carolina 28031, USA

E : info@escvinylpile.com T : 980 689 4388

E : bruce@escvinylpile.com T : 704 654 0321

E : andrew@escvinylpile.com T : 860 965 3270

E : david@escvinylpile.com T : +1 849 395 5773 (WhatsApp Only)

FACTORY

2185 Salisbury Hwy, Statesville
North Carolina, 28677, USA

Para solitudes en español, por favor contactar a

E : samuel@escvinylpile.com T : 401 206 8727

