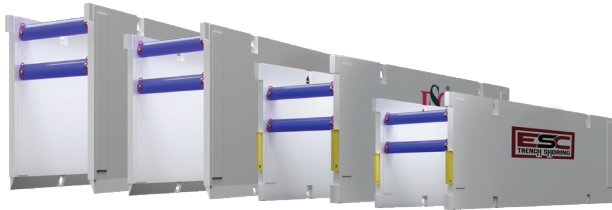


ESC 6" TRENCH SHIELDS SERIES



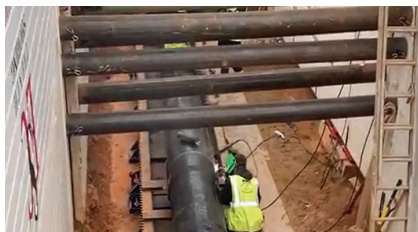
TECHNICAL SPECIFICATIONS								
SERIES	HEIGHT BY LENGTH	WEIGHT	PIPE CLEARANCE	LENGTH BETWEEN SPREADERS	SHIELD CAPACITY	MAX EXCAVATION DEPTH		
	H X L	(2 x panels)	CH	CL	psf	B-Soil	C-60 Soil	C-80 Soil
	ft	lb	in	ft		ft	ft	ft
TSB6-416	4 x 16	4896	18	13'11"	2518	40	40	30
TSB6-420	4 x 20	5857	18	17'11"	1523	34	26	20
TSB6-424	4 x 24	7605	18	21'11"	1181	27	20	16
TSB6-616	6 X 16	6532	40	13'11"	2358	40	40	30
TSB6-620	6 x 20	7842	40	17'11"	1426	33	26	20
TSB6-624	6 x 24	10411	40	21'11"	1127	26	21	16
TSB6-816	8 x 16	7922	64	13'11"	2030	40	37	28
TSB6-820	8 x 20	10897	64	17'11"	1573	37	29	23
TSB6-824	8 x 24	12762	64	21'11"	1053	26	20	16
TSB6-1016	10 x 16	9403	76	13'11"	1501	37	29	23
TSB6-1020	10 x 20	13330	76	17'11"	1338	33	26	21
TSB6-1024	10 x 24	15624	76	21'11"	1046	27	21	17

- ✓ All 4' and 6' shields can be used as Extension Shields.
- ✓ Depth ratings include consideration of surcharge load of 72 psf.
- ✓ As per NAXSA recommendations, depth of cut has been limited to 40ft for types A, B and C60 soil, and 30ft for C80 soil regardless of the capacity of the shield. If deeper cuts are required, it is recommended that a professional engineer is engaged to evaluate the site and soil conditions and specify a suitable trench shield or other shoring solution.



TSX6-416	4 x 16	4300	16	13'11"	3038	40	40	30
TSX6-420	4 x 20	5100	16	17'11"	1911	40	30	22
TSX6-424	4 x 24	6000	16	21'11"	1403	29	22	16
TSX6-820	8 x 20	9200	64	17'11"	1716	36	27	20
TSX6-1016	10 x 16	7600	88	13'11"	1522	32	24	18
TSX6-1020	10 x 20	11300	88	17'11"	1437	30	22	17
TSX6-1024	10 x 24	13100	88	21'11"	1351	28	21	16

- ✓ Knife edge or flat bottom
- ✓ 5th spreader collar



ESC STEEL LLC

CHARLOTTE, NC
 18805 W Catawba Ave, Suite #207, Cornelius,
 North Carolina 28031, USA
 T : 980 689 4389 / 704 302 4337
 E : tyler@esctrenchshoring.com
 E : bruce@esctrenchshoring.com

HOUSTON, TX
 T : 281 205 7261
 E : info@esctrenchshoring.com

SALES & DISTRIBUTION YARD
 5268 Davidson Highway, Concord,
 North Carolina, 28027, USA

