



**ESC Group:  
Building the  
Future with  
Expertise and  
Complete  
Engineered  
Solutions**



# ESC Group: BUILDING THE FUTURE WITH EXPERTISE AND COMPLETE ENGINEERED SOLUTIONS

*ESC maintains a strong commitment to empowering a more sustainable future by providing complete engineered construction solutions that increases efficiency and reduces risks in projects*

Unexpected socio-economic distractions especially the pandemic has undeniably altered the way business is done for some time. Political conflicts have also been intervening on-off, affecting economies and commerce negatively. But besides these constraints, social - economic - environmental issues are emerging more critical and still deemed as the main priorities in the next 100 years or beyond. Why so? These three aspects, besides morals, are the pillars of sustainability or sustainable development – a quest for human which is so far a work in progress.

The business world is, of course, aligned to making profits and stable economies but also becoming more socially and environmentally conscious. This is not just because regulations, customers, and clients demand for it, but because helping to maintain those aspects in balance is every individual's obligation and a responsibility for corporates and governments.

As a responsible organization, ESC Group continues to develop and execute a comprehensive business approach to maximize long-term economic, social, and environmental value. We take part in the ever-volatile market with our own brand of confidence and style to practice fair competition, promote awareness and philanthropy, and to be a pro-active player in the global supply chain. The Company upholds its virtue in comprehending and considering the impact of its interests to own employees, counterparts, stockholders, and consumers

within and across industries.

ESC maintains strong commitment to empowering a more sustainable future by providing complete engineered construction solutions that increases efficiency and reduces risks in projects. It has been our passion and shall continue to invest resources in ventures that aims to tackle universal challenges and improve our quality of life.

We intend to devote the depth of our engineering and research capabilities to explore sustainable





# Table of Contents



**INTRODUCTION:**  
Building the future with Expertise and Complete Engineered Solutions  
**02-05**

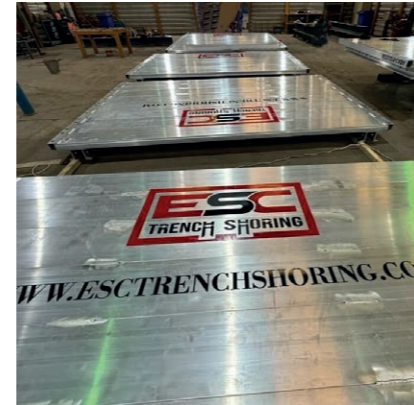
**ESC GROUP**  
New Look  
**07**

**A TRIBUTE TO OUR FOUNDER**  
MILTON COLSON  
**08-11**



**FEATURED PRODUCT**  
ESC Aluminum Trench Shields  
**12-13**

**PROJECT HIGHLIGHTS**  
**14-23**



**NEWS FEATURES**  
ESC Global Gathering  
ESC Philippines  
ESC Group (UAE)  
**24-27**

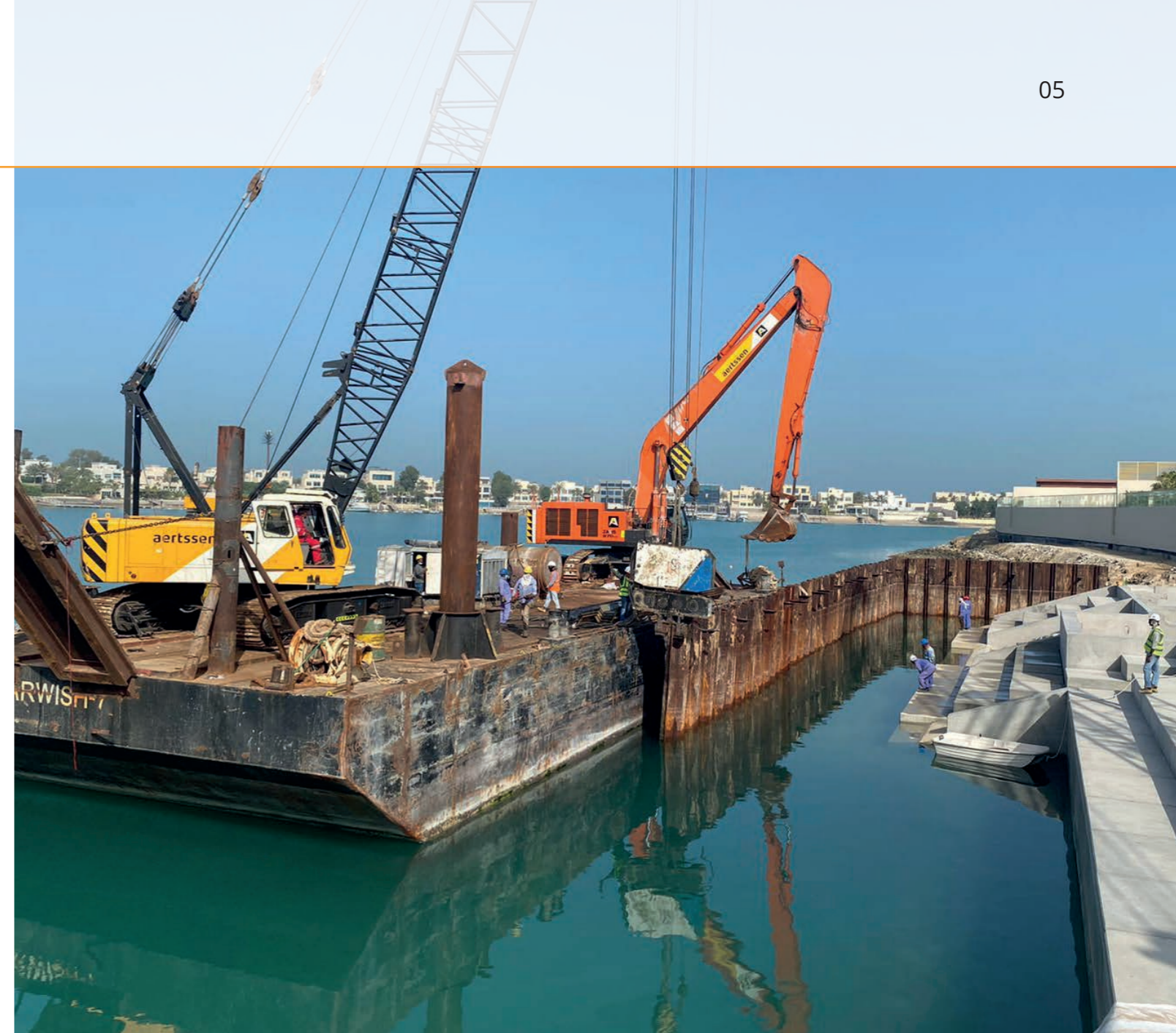
**EMPLOYEE PROFILE**  
Kevin Ashdown **28-31**

## GET TO KNOW ESC EMPLOYEES

Seiji, Namita & Ameera **32-33**

## A PENNY FOR YOUR THOUGHTS & PET LOVERS

**34-35**



*"ESC is firm as ever in our beginnings and ideals in building a promising and sustainable future."*

designs that focuses on green compliance, material selection & usage, and energy efficiency to eliminate or minimize environmental impact while extending the lifespan of valuable assets.

Doing our share in battling serious global issues by providing high quality products and services is always our greatest motivation in almost 40 years of pioneering. ESC does not simply sell technical support to clients who requires our

solid expertise, we trade with utmost ethical sensitivity to cater the best possible value worthy of our patron's trust.

ESC thrives to build legacies in different parts of the world through engineering and technological contributions that eases detrimental results of climate change, pollution, rapidly increasing population, and expensive socio-demographic lifestyle.





## ESC GROUP NEW LOOK

*ESC Group takes pride in introducing a new logo that represents the Company transformation over almost 40 years of prevailing in our line of industry.*



This modification that gave a more robust impression to our brand is a message to our customers and the rest of the world that ESC does not cease but keeps on getting better to adapt with the constantly changing business environment.

The boldness in our new logo stands for a firmer ground, larger network and resources, and unwavering stance towards excellence. ESC also assures that this remodeling of company logo does not affect, in any way, our relations with existing clients and partners.

It is our very corporate way of celebrating milestones and giving a fresh start to our bid for greater achievements and performing with exceptional enthusiasm. Change is inevitable. Change is constant. But whether in new look or classic style, ESC remains passionate in serving customers with integrity and sense of accountability, just like the old times.

Foundation Piling | Trench Safety Solutions | Steel Structures  
Fabrication | Marine Systems | Corrosion Protection System  
Regional Offices: USA, USA - Trench Shoring, Phillipines,  
Malaysia, and Indonesia



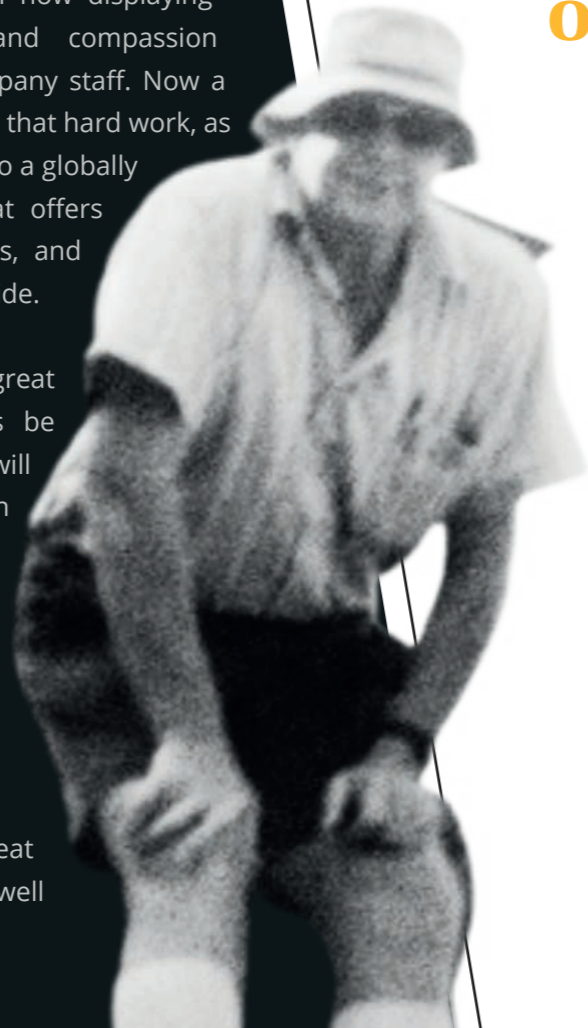
A life well spent – Milton Colson. There are those that greatness was thrust upon them, there are some who achieve it. There are those who are born great and went ahead to achieve more greatness.

ESC pay tribute to a great man, a leader, a mentor, a coach, and a friend, whose life will remain an inspiration to everyone.

We are thankful for courage, perseverance, and patience to establish a company and worked hard to reach goal after another. Mentoring a good number of leaders who are until now displaying the same discipline and compassion towards clients and company staff. Now a lot of people benefit from that hard work, as years after, ESC grows into a globally recognized company that offers quality products, services, and job opportunities worldwide.

Gone – but left a great imprint and will always be remembered. We will show our appreciation by showing dedication, compelling work ethics and commitment. ESC will continue to grow, and the company's visions will be realized.

Thank you for your great heart Thank you for a life well lived.



# HONORING AN INGENIOUS LEADER:

## A Tribute to our founder

Goodbye Mr. Milton Colson. Your leaving brings up sadness and at the same time a lot of memories as my big boss over the years. I still remember as a fresh graduate year 2002 from Penang, you were the first one who gave me handshake welcome me onboard to ESC at JB Tiong Hua Association basement job site. I want to say you are always kind and nice to me all these years.

Thank you!

**Ir Chan Hon Kit**  
 Director, ESC Steel Engineering Sdn Bhd & PT ESC Steel Indonesia



When I joined ESC in 2008 – Milton was already retired. I only have a chance to have some drinks with him 2-3 times. However, I think it will be hard to just say what sort of person he is just upon 2-3-time drinks.

However, through conversations with my colleagues and acquaintances, what I heard is that: Milton was known for his high level of discipline, encouraging that staff members worked diligently six days a week. When it comes to business, he instills a strong work ethic by prioritizing efficiency in the workplace. Milton's direct and collaborative approach as a boss made communication straightforward and efficient. Unfortunately, my knowledge of Milton's leadership is limited to these aspects.

**Vincent Huang**  
 General Manager, ESC Group (Shanghai)







I had the privilege to work with Milton in my early days at ESC, at the factory in Pontian Johor and I also knew him growing up as a kid and teenager in Malaysia. I remember fondly Milton had a very strong approach working with ESC staff, not holding back at all and left everyone fearful in the office and factory of getting on his wrong side.

On a softer side, Milton also gave me encouragement and kind words in my junior days at the company which helped me persevere and grow within the company. I was amazed at Milton's ability to be able to finish a bottle of whiskey in one sitting!

The founders of ESC Milton and my father John Snr were like Yin and Yang, two opposites that together worked effectively (and clashed occasionally) to build the foundations and grew ESC into the multi-national company that it is today. I am deeply saddened with his passing, but I am grateful for the opportunity to be part of continuing the legacy with ESC management for generations to come.

**John Luis Yeates**  
*President, ESC Steel Philippines Inc.*



# Milton Colson

It is with a very heavy heart that we had to say goodbye to my mentor and father Milton Colson. Milton co-founded ESC with John Yeates 33 years ago and they have watched as its grown into a global company.

He was a people person and had a great rapport with staff and clients alike. I'd like to think he was well liked across our company and client base.



He'll be severely missed as a Father, Grandfather and friend.

I will continue to strive to ensure his legacy continues and is not forgotten.

**Bruce Colson**  
*CEO, ESC Group*





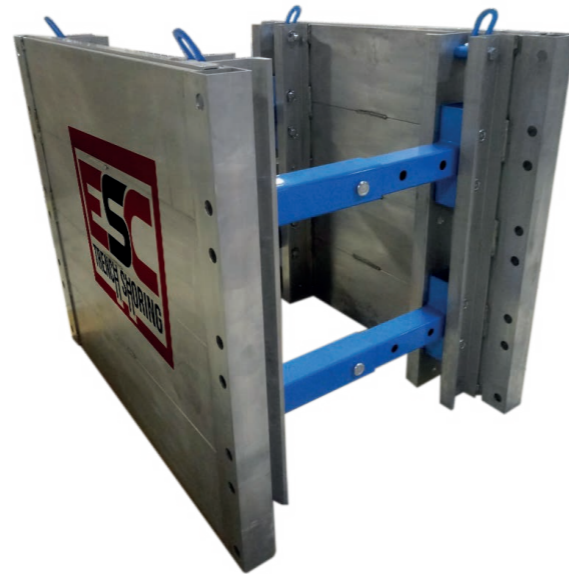
# ESC Aluminum Trench Shields



With the significant upgrade required on existing infrastructure in the US and the new housing growth the market for trench shoring products continues to look very promising. The vast percentage of trench shoring material is temporary and this allows contractors rental and purchase options.

ESC Trench Shoring, Inc., a NAXSA and NUCA member and a recognized provider in the global stage has now launched its latest product line of aluminum trench shields and sheet piles.

ESC's array of trench shoring and safety products has been enhanced by the inclusion of the ABX Series- an Aluminum Trench Shield (Trench Box) developed by ESC's engineering arm. The production of Aluminum Trench Shields will be carried out in Mexico to supplement the capacity of the UAE and allow more direct sales into the West Coast of the US and into Latin America.



Previously, all production was centered around our UAE facilities and the introduction of US (Steel Trench Shields) and Mexico based facilities will help complement our range of Steel Trench Shields and Sheets in providing optimum solutions for all types and sizes of excavation and trenching jobs in North America and globally.

ESC will now also eye distribution of the aluminum trench shields and equipment in newer markets like the UK, Sth East Asia, Australia, and New Zealand.

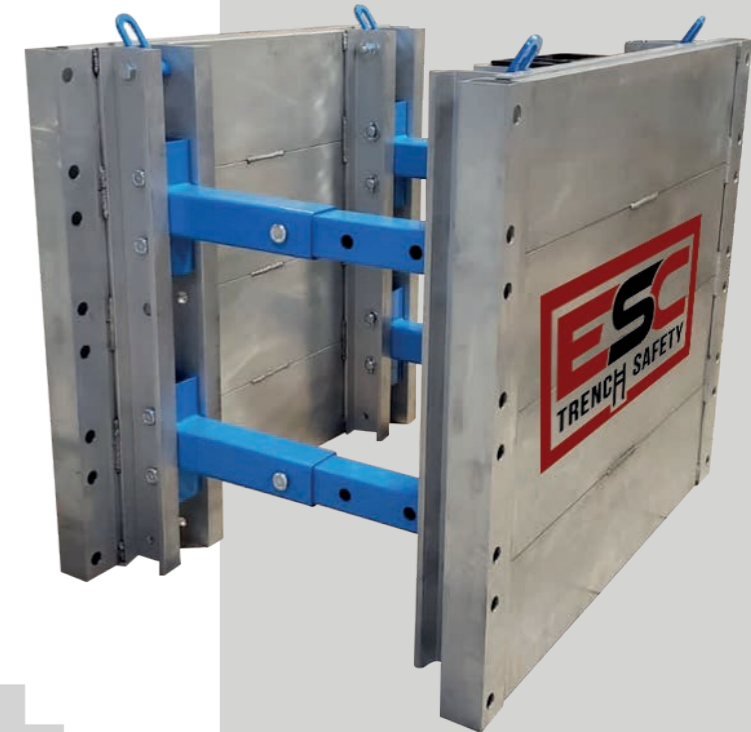


The ABX Series' light weight makes it ideal for applications using smaller units of machineries such as mini-excavators and rubber-tired backhoes or similar. ABX Trench Shields are manufactured using aircraft-grade aluminum alloy making it light but sturdy- the physical attributes that suits it best for smaller jobs such as routine maintenance works, on-the-spot repairs, and many more.

The actual, downscaled prototype of the ABX Series awaits for customers in the ESC Cornelius office where anyone can feel and explore its robustness while discussing project needs with our competent professionals. ESC offers a complete line of steel and aluminum trench shields that covers a very wide range of pressure ratings and project site configurations, locally and internationally.

*ESC Aluminum Shields which are available in commercial and custom sizes have the following features and benefits:*

- Compliant to OSHA Standards
- Fabricated from 6061-T6 Aluminum Alloy (aircraft grade)
- 3" Wall Thickness
- 4" Spreader Thickness (Steel)
- 4-points Lifting Lugs
- Lengths up to 16ft
- Height up to 8ft
- Cost-effective (Easy Installation & Lightweight)
- Adjustable Spreaders at close increments
- Does not rust



# Featured Product



PROJECT HIGHLIGHTS

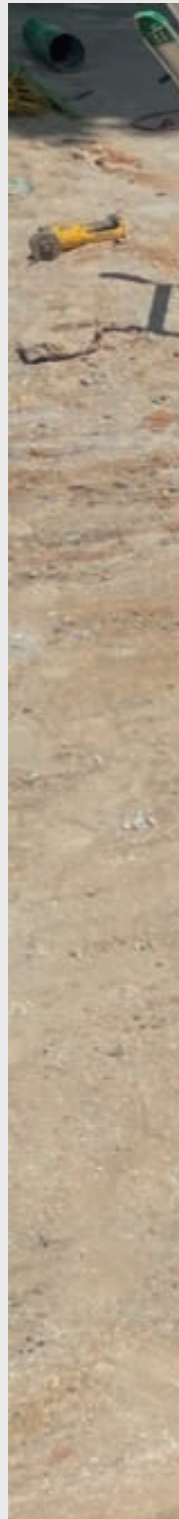
# Mooresville, North Carolina Trench Shields Supply

ESC is the chosen trench shield supplier for a sewer line project in Mooresville, North Carolina. The TSB4-820 series, 8ft high x 20ft long, was selected by the Contractor to provide maximum safety and convenience for their piping job that involves connecting sewer networks to existing manholes.

This year, the governor's office of North Carolina disclosed a record high budget of around USD800 million for drinking

water and waste water projects that will replace aging infrastructures and maintain the viability of remaining utilities across the state.

ESC eyes to take part further and positively in this state campaign to promote health and economic well-being of communities across its territories.



# United States



United States



## Bermuda, Fibre Reinforced (FRP) Sheet Piles

ESC Steel LLC has delivered another project with its supply of Fibre Reinforced (FRP) Sheet Piles for the requirements of an existing marina in Bermuda.

The ESC-GW350-FR series in 19.4 feet lengths were used to create protection for the residential side of the marina waterfront. Completion of the FRP sheet pile wall enabled the rehabilitation and restoration of walkways washed away by tidal activities.

Besides vinyl, FRP sheet piles are excellent for seawalls and waterfronts due to their resistance to corrosion, long lifespan, and easy installation.

Malaysia



## Kuala Lumpur, Flood Mitigation Project

With the frequent flash floods in Kuala Lumpur that affected major roads, livelihood and infrastructure, the Malaysian government has built plans to resolve this growing issue and it aims to improve current infrastructures with flood-prevention capabilities.

ESC Malaysia was awarded the supply of Vinyl Sheet piles to one of the flood mitigation in Kuala Lumpur. The ESC-ZGW460-11.18 has superior corrosion resistance thus prolonging the lifespan of the structure. These Vinyl Sheet Piles will aid in the reduction or prevention of the detrimental effects of flood waters and deference against soil erosion.





# Bailey Bridge Projects



## PROJECT HIGHLIGHTS

### Mindanao, Bypass Road Project

A 42 meters span quadruple truss bailey bridge is used as temporary access to travel heavy trucks, equipment, and construction materials. Besides supplying an economical and reliable Bailey Bridge system, ESC also provided engineering and technical support such as structural investigation & analyses, assembly sequence, and project monitoring to ensure project success and client's requirements were met.

# Philippines





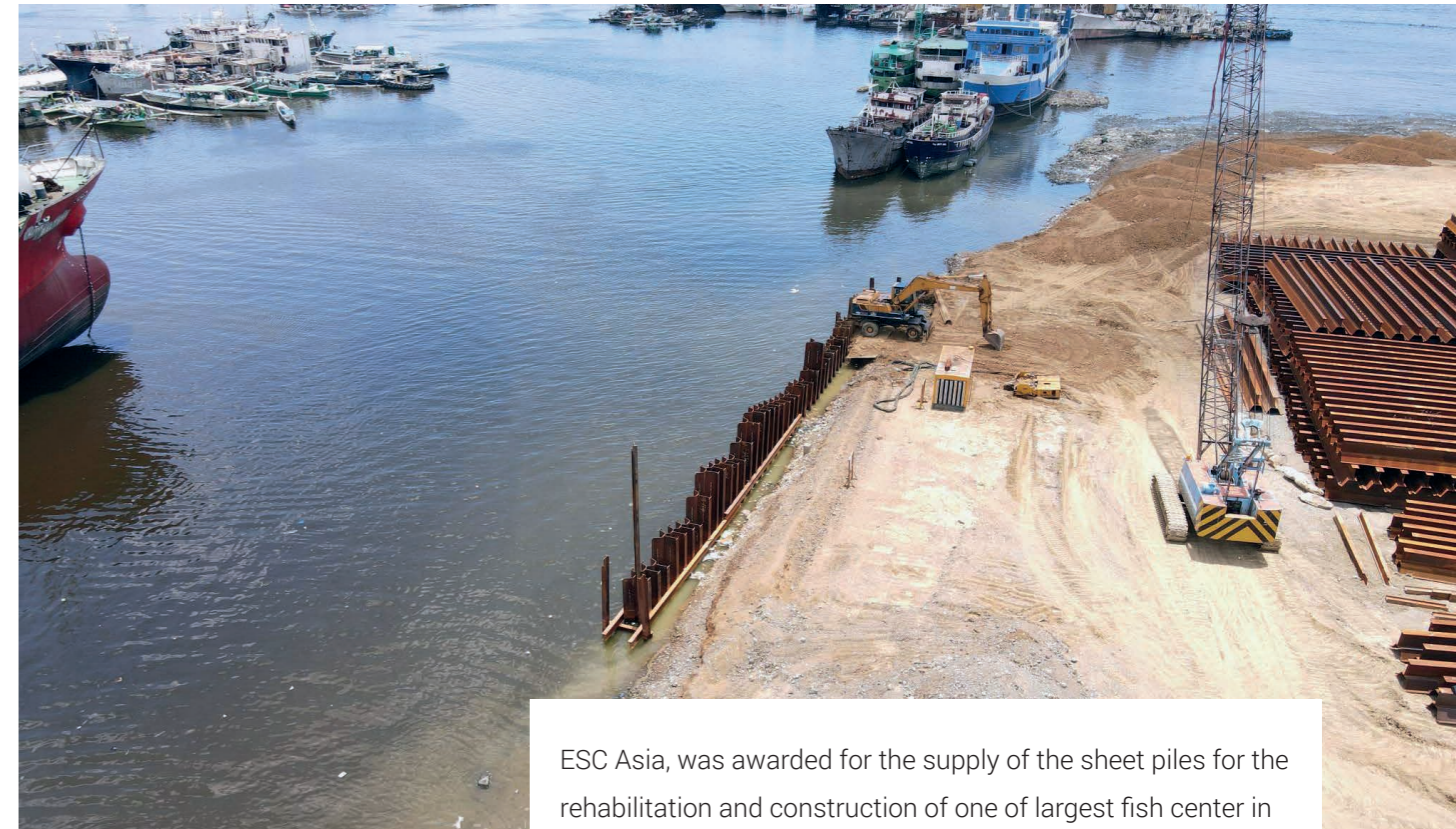
## Visayas, Bailey Bridge Project

ESC worked with the Local Government Unit and the awarded contractor in the Visayas region of Philippines for the supply of a custom 21m single span 4.2m width single lane steel bailey bridge with a maximum loading allowance of 15mT.

Using a tried and tested modular design, ESC produced an economical and robust bridge system that was tailored to the requirements for the project. ESC coordinated the complete delivery all the way up to the project site and also supervised the assembly process to ensure the 311 component parts and 436 bolts were properly installed. The assembly of the bailey bridge after anchors were set took only 4 days which is multiple times faster than any other bridge design.



**PROJECT HIGHLIGHTS**



ESC Asia, was awarded for the supply of the sheet piles for the rehabilitation and construction of one of largest fish center in Asia - Navotas Fish Port Complex.

## Navotas Regional Fish Port Project

The sheet piles will be utilized for the piling works of the pier structure. Completion of the project will provide additional facilities for the harbor operation that supplies fish and other aquatic products to major markets in Metro Manila.

ESC provided value engineering and sheet pile design optimization combination of H-Pile and Omega Piles that were used to help stabilize the reclaimed land.





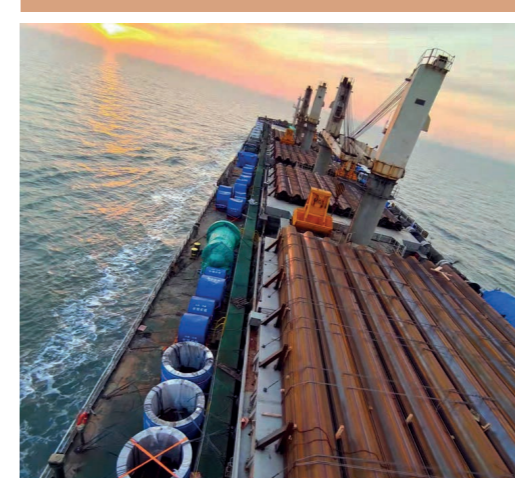
# Ras Al Khaimah, Standard & Manhole Trench Boxes Supply

The Government of Ras Al Khaimah, Public Services Department, Works Agency awarded ESC Group (Middle East) - ESC Trench Safety Solutions the purchase of Standard Trench boxes (Base and Top Boxes) and Manhole boxes. These are utilized for various excavations, several vital stormwater systems and seawater desalination projects in the emirates.

ESC Trench Boxes are crucial in the excavation works making the trench more stable and durable, it also provides a safe working environment to the workers.



PROJECT HIGHLIGHTS



# Mexico City, New Airport Freeway Project

Acerlum-ESC supplied 5,092.918 Metric Ton of ESC sheet pile (HOESCH 1907) for the new Airport (AIFA) freeway project.

Access to the new airport since it opened has proven to be complicated according to users. To ease access, López Obrador's government built a main road in addition to renovating other freeways. The toll-free highway goes directly to Felipe Angeles Airport with a length of 14 kilometers, with an expected travel time of 9 minutes.

MEXICO



# ESC

ESC Global Gathering 2023 was a 4-day event held from April 17 to 20, bringing together ESC group leaders and key players to gain insights into critical aspects of the business and further strengthen connections. ESC Philippines hosted the gathering with around 35 attendees. The second day featured a company conference at Seda Hotel, commenced by an opening remark from John Yeates, followed by presentations on the company's current market situation, objectives, goals, challenges, and strategies to improve relationships with ESC customers.

On the third day, highlights included the introduction of an efficient Enterprise Resource Planning (ERP) system and marketing presentation, discussing current status, upcoming improvements and the use of digital innovations to generate new leads. Partners and suppliers were also invited to witness the presentations, strengthening alliances for greater accomplishments.



*April  
17-20*



Overall, the forecasts and plans presented during the gathering were overwhelmingly optimistic, with upcoming projects in various locations and continued internal and external partnerships expected to drive business development. A corporate dinner provided an opportunity for casual conversations, fostering harmonious working relationships.

To appreciate Philippine culture, the team paused for a historic and cultural diversion as they enjoyed the illustrious districts of the "Walled City" or Intramuros in Manila all the while fostering a sense of camaraderie.

Congratulations were extended to all attendees, expressing enthusiasm for the success of this year's goals and beyond, and extending happiness and prosperity to all ESC employees working together. Cheers!



# Global Gathering

**ESC GROUP  
NEWS FEATURES**



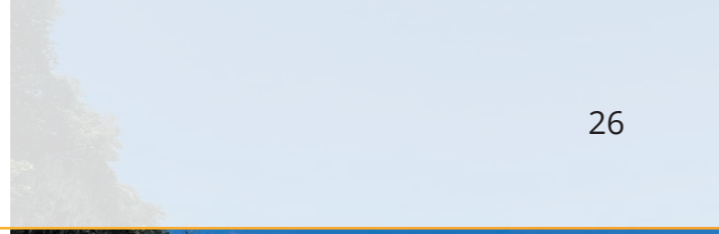


# ESC Philippines Goes to Boracay

It's the time of the year to build team camaraderie. What could be better than to spend relaxing moments, thrilling adventures and create solid relationships with teammates – on the premium, famous and enchanting – The Island of Boracay.

For three days. ESC Steel Philippines' employees with its President, John Luis Yeates, enjoy pristine white sand, satisfying views and the feel of nature to relax and relieve some stress.

The team created an unforgettable experience, a lifelong memory of enjoying the activities in the world-class Island. Some of which are Parasailing, Helmet Diving, Island hopping, Bar hopping, and more! The fun and laughter shared creates a harmonious and balanced relationship within the teams.



## TEAM BUILDING ACTIVITIES AND AWARDING

Encouraging collaboration and teamwork, games and activities were conducted to help increase communication, planning skills and to work together towards a goal.

Rather than a competition, the prepared games enhanced employee engagement and enthusiasm. It created something to look forward to, celebrating the team's spirit and motivation. Grouping the employees into 3, team 2 led by Raffy with its team members Marvin, Kristina, and Archie worked the hardest and won all the games.

Awarding follows shortly, it was short, but fun and will surely leave marks to foster connections, productivity, and teamwork.



# ESC Group (Middle East) Boat Party



With the aim of providing a refreshing change of scenery and strengthening the bond between teams, ESC Group (Middle East) hosted another boat party for the team. A recreational activity that brings colleagues of both ESC Steel LLC and ESC General Contracting team together. Breaking down barriers and fostering a sense of belonging among team members with sumptuous food, lots of beers and cheerful dancing.

The informal atmosphere of the boat party encouraged a meaningful conversation among the team. Participants exchanged chats, which built a stronger working relationship, effective collaboration, and teamwork.

The day came to a close with an abundance of picture taking, preserving the memories of this remarkable moment.

## SUMPTUOUS FOOD, LOTS OF BEER, & NON-STOP DANCING.



## EMPLOYEE PROFILE



# GRAHAM ASHDOWN

Kevin Graham Ashdown joined ESC in Nov 1994 as Engineering Manager who oversees all technical aspects of operation. His dedication and consistent hard work paid off and in 2009 he set up and started working as the Managing Director of ESC Al Sharafi Steel LLC in UAE, steering a dynamic governance with his leadership ability, professional experience, and technical knowledge in the industry.

Learn more about Kevin Ashdown, the key person from ESC Group (Middle East), the leading sheet pile supplier and contractor in the Middle East and Africa.

### 01 *What do you love about your job? What's the best thing about it?*

Designing things and then getting to build them. It is incredibly satisfying to see your ideas becoming reality in the factory or on site. Also quite scary as you always wonder if you got it exactly right! I also love working with the team that we have built in Abu Dhabi and around the world. A wide range of characters, each with their own strengths and idiosyncrasies. Sometimes it's hard work and sometimes it's a lot of fun, but it is very rarely boring.

### 02 *What has been your favorite ESC Group project?*

There are several that stick in my mind out of the hundreds that we have completed. My first project was the JB Landmark building in Johor Bahru, Malaysia in 1994. This was the first time I had seen a sheet pile (even though I had told Milton and John that I knew all about sheet piles during the job interview) and was a massive learning curve for me. Bruce and myself were on site and it was bloody hard work, but we enjoyed it and had a good time. Another project that sticks in my mind was the Fujairah Port Break Water Berths in 2007. This was ESC's first combi wall project. I had done the engineering together with John and fabricated over 1000 tons of material. I then had to go to Fujairah and supervise the first piles being driven, hoping and praying that we had done everything right. The piles drove beautifully, and the client was very pleased. One of the highlights of my time with ESC.

### 03 *What's the best career decision you've ever made?*

Obviously joining ESC was the biggest career decision I ever made. However within my time at ESC, the best move I made was coming to the Middle East and working in the UAE office. During the financial crash of 2008, our future as a Company was very uncertain however we knew we needed to move our operations out of Malaysia. I was fortunate that the office had already been established in Abu Dhabi, thanks to the efforts of Bruce, Milton and John, and we already had some ongoing projects. I was able to arrive and start to manage an existing but very humble operation. Since then, the UAE team has blossomed. Wong is the one of the original team. He has been joined over the last 14 years by an incredibly hard working and talented team spread across the factory, the sites and the office. It has given me a great deal of pleasure and satisfaction to be part of that team and to work with such great people.

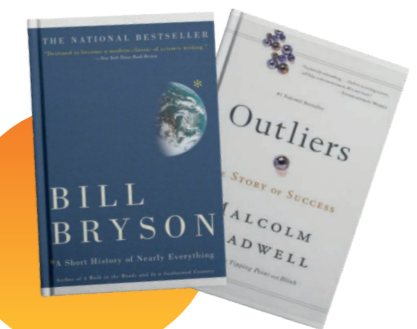
### 04 *How do you manage your time? How do you balance work and family time?*

Effective time management is something that has always been a challenge for me, and it is something that I need to constantly work on. There are constant distractions from staff and clients as they all need their problem addressed urgently. This is usually around 5pm (the 5 pm rush), resulting in the need to work late and sacrifice family and personal time. To effectively manage time I try and plan ahead, delegate what I can and insist on solutions to problems rather than just problems by themselves. Getting the right balance with work and

family is a challenge however, and not just for me. That is why we reduced the working hours in the office from 5:30pm to 5:00pm. This was specifically done to encourage a better work/life balance as it was felt staff were working too late. Sometimes the best thing to do is just go home and come back refreshed in the morning.

### 05 *What books do you usually read?*

I like Malcolm Gladwell as an author. His books are very thought provoking. I'm a big science fiction fan as well. Anything by Neal Stephenson. I really enjoy reading Bill Bryson, especially his science history book, "A Short History of Nearly Everything". When I need to research a new technical knowledge, I really enjoy sourcing and reading the relevant books. A good example is our new direction into aluminum products and the back-ground reading I am doing for that.



### 06 *What do you think are the secrets behind getting to where you've got to?*

Consistency and being conservative. Stick with what you know and reduce risk as much as possible. It's boring but it is safe. I have also been fortunate to work with Bruce who has a lot of vision for growth and expansion. I am then able to work with his (better) ideas and do what I can to make them a reality. Also a fair amount of luck if I am honest.





**7** *What hard skills should someone in your field have?*

Engineer or manager? Lets go with engineer. Too many engineers we have employed over the years lack practical skills and have no interest in developing them. I was lucky that my father taught me a lot of the practical skills I still use today. An engineer needs to understand the work being done on the ground, not just in the office. If you can learn some of the skills that the guys in the factory and on site are using on a daily basis, it makes it easier to manage or design accordingly. It also helps when you are talking to the guys if you know what you are talking about. And reading. Not enough people read. Google is not always the answer.



**8** *What's your most-used productivity hack?*

I have two. The first is an old-fashioned list of "Things To Do" which I make at the start each week and add to each day. There is a huge amount of information coming in each day in the form of emails, phone calls and people walking into my office to discuss things. It is easy to forget tasks as new issues and problems arrive and take

up your mental space. At the start and end of each day, I review my list to ensure I am addressing the critical tasks, and cross off the one I have completed. My second hack is to just pass it to Grace and ask her to do it.

**9** *what sports do you like? Who are your favorite teams? Share your coaching work?*

I like all sports, but rugby is my favourite. Unfortunately I am too old to play much sport except golf these days. The All Blacks would be my favourite team, though at the moment they aren't doing very well. I also coach a women's rugby team for the local rugby club which keeps me busy and gives me an release from the pressures of work.



**10** *Who do you look up to within the company?*

I was lucky enough to be employed at a young age by Milton and John. Two very strong figures in quite different ways. A huge amount of the skills I have come from the influence they have had on me over the years, and I will always appreciate that.

**11** *What motivates you at work?*

The desire to succeed and the fear of failure. I want to build the Company as much as possible and if I get it wrong then our staff don't get paid. It's a delicate balance and it keeps me motivated to do the best I can.

**Kevin, we express our sincere gratitude and admiration for your invaluable contribution to the success of ESC Group.**



**12** *What's your idea of a perfect day?*

The All Blacks win the World Cup and I'm in the corporate box for the final. Then I beat Thomas at tennis.

**13** *Who inspires you?*

Seeing the work being done in our offices in Shanghai, Manila and the USA. Some clever people doing some clever stuff. I would love to copy a lot of what they are doing, and replicate it in the UAE office.

**14** *What's the best place you've traveled to?*

I've been lucky enough to travel to a lot of places over the years. Some have been amazing and some not so great. Iceland was amazing and certain parts of Asia were pretty cool. Best place in the world though is my little beach house in NZ.

**15** *What do you always want to try and never did?*

Sailing. I have always meant to learn and never have.

**16** *A quote that motivates you?*

**"You got to know when to hold em, know when to fold em, know when to walk away, know when to run. You never count your money when you're sitting at the table, there'll be time enough for counting when the dealings done."**

The late, great, Kenny Rogers.

**17** *What's one thing you're really bad at?*

Only one? Golf maybe? Probably the thing that I'm most famous for is not remembering people or names. This can be someone I have only just met or someone who I have supposedly known for a long time. Has led to several embarrassing moments over the years. Also very bad at singing.

**18** *What's one thing you're really good at?*

Saying the wrong thing at the wrong time. I seem to have a talent for it.

**19** *What would be the title of your autobiography?*

**The World Would be Different if I were In Charge.**





# www.escsteelstructures.com



## Get to know ESC employees!



Seiji has recently joined ESC Steel Philippines Inc. as a Procurement Officer. He has been working in the procurement field for a total of six years in the construction, real estate and hospitality industries handling various supply commodities. Seiji aims to continue improving his skills and gain more knowledge thru attending trainings/seminars on Purchasing Management.

Seiji graduated from Mindanao State University – Marawi City (Main Campus) where he obtained a degree in Civil Engineering. His interests include, music, performing arts, food and travel, hiking and some sports. He usually spends his free time checking various social media platforms and watching K-Drama series. One of his favorite life lessons is, “Do not follow your passion. Follow the opportunity you have. And whatever opportunity you have, bring passion with you.”

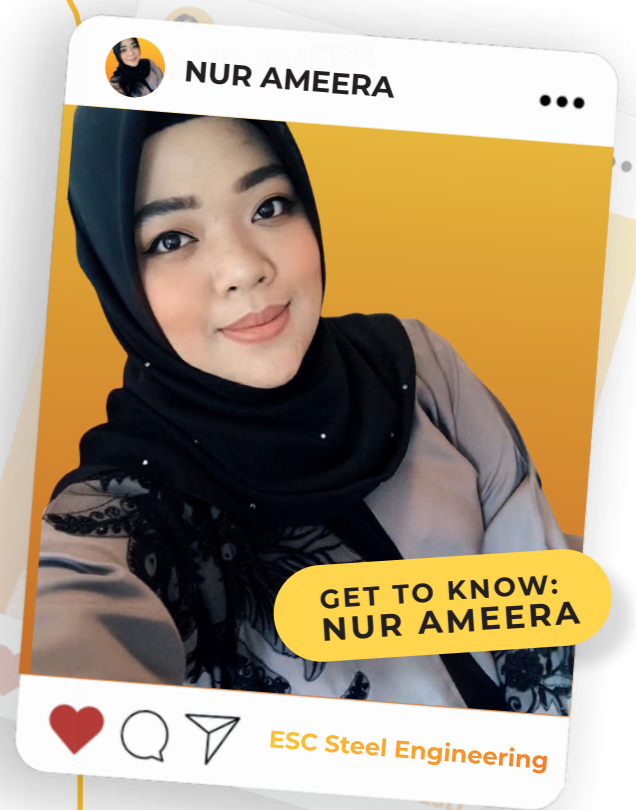


Namita Singh is the Sales Manager at ESC Group (Middle East.) She’s responsible for overall business development and revenue generation for the Dubai branch. At her former company, she worked as an operations manager that managed teams of people and developed a strong cliental base. Most of her work experience revolved around working with giant steel companies. She has completed her MBA at SP JAIN, with a major in marketing. As an employee, she strives to take ESC to new heights.

She joined the ESC team in October 2021 and has loved it ever since. She has shared that the team is very supportive and always encourages her to perform better. Her core motivation within the company is Kevin Ashdown, her MD, who inspires her to be the best at what she does. Namita has no spare time, because she has 2 kids and a dog but in the few minutes she gets in the day, she likes to read the newspaper. She also enjoys playing badminton.

Nur Ameera graduated from University Tenaga Nasional (UNITEN) in 2016 receiving her Bachelor’s Degree in Civil Engineering. After that she started her part time in Talent Corporation Sdn Bhd while pursuing her Master in Structural Engineering. Then, while studying for her master, she worked as a Facility Executive for two years and then covid happen, she started her own f&b business. Not long after, she got a job as a Sale Engineer in facility management company for another two and a half year. She manages to bring around 4Millions sale for the start-up company where she travelled all over peninsular Malaysia to meet the client, to see the site and to deal with the project. Then, in February 2023, she joined ESC Steel Engineering Sdn Bhd as Sale Executive, her roles are to promote and develop the market for ESC products in Malaysia.

Her life outside working is all about cats and cats. She has at least 18 cats at her home. The oldest one is about 14 years old and the youngest is around 3 Months. She also spent her free time baking and spent quality time with family and friends.



GET TO KNOW: NUR AMEERA



**A PENNY FOR YOUR THOUGHTS:**

*If you could meet anyone in the world dead or alive, who would it be and why?*

I would like to meet my brother again, he died 27yrs ago, it was sudden, and we didn't had the time to talk. I just want to check and hope he's doing good wherever he is now.

But for a known figure, I would like to meet Adolf Hitler, I simply ask him why? And what satisfaction did he get from the holocaust that he had caused.

**Jhot, ESC Philippines**

I want to meet the math teacher at my primary school and thank her, she really taught me a lot.

**Jason, ESC China**

I don't think there is anyone, if really has to be one, then one of my old friend who never contacted for long time.

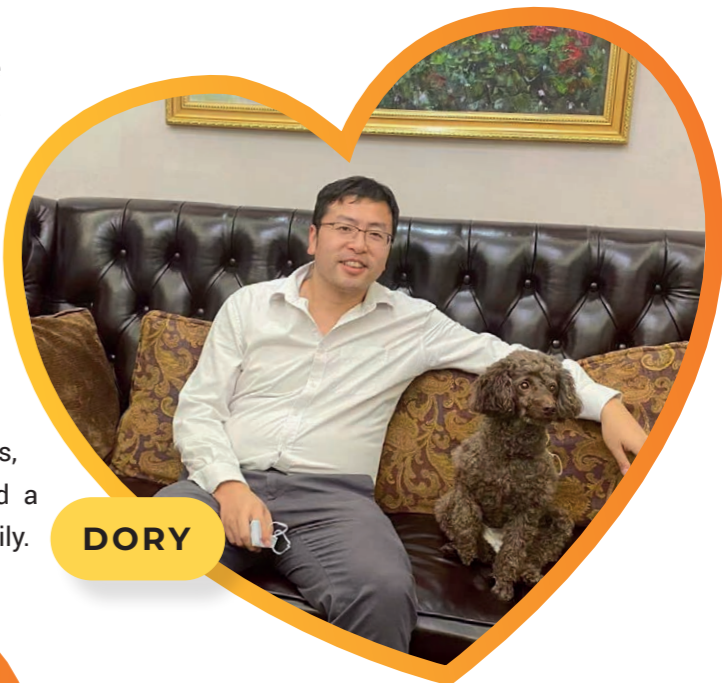
**Chew, ESC China**

Apolinario Mabini because I want to know what kind of person he is. How he thinks, acts, everything.

**Kristina, ESC Philippines**

**PET LOVERS: SHARE YOUR PET**

Say hello to Dory the poodle, Jason Lan's bestfriend. Dory had a profound love for a simple boiled chicken breast, which was not only delicious but also a healthy treat for him. He used to be clingy and fond of playing catch with his human buddies when he was younger. Currently, he is already 12 years old and has grown quiet. Nevertheless, he remains to be an irresistible companion and a cherished member of the family.



**DORY**



**XIAO HUANG & XIAO LV**

Meet Lei Xin's feathered friends, Xiao Huang and Xiao Lv. They both like to sing early in the morning. It is their way of expressing emotions and communicating with their owner. With their wide range of vocalizations, they keep themselves and their human companions entertained. More to this, they can say simple greetings such as a friendly "hello."



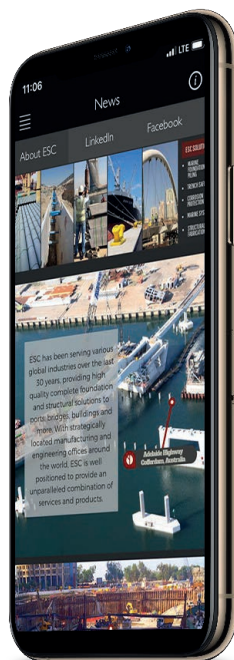
**ASHLEY**

Nur Ameera's oldest baby cat is Ashley, a 14-year-old female cat. When she was young, she's a physically active cat, acting like a big boss in the house. She is lovely, goofy, and playful until she was diagnosed with kidney failure. Although she is not as active, she continues to wait for Ameera from work to cuddle, eat, and sleep. Ameera loves her all her life. She wouldn't trade Ashley and her other cats for anything else in this world.





Many thanks to all contributors for the great job to help launched the issue.



Next volume will be issued November 2023, email anything you would like to contribute, or suggestions and comments to [sherryl@escpile.com](mailto:sherryl@escpile.com). Thank you.





**ESC GROUP APP**  
**DOWNLOAD NOW!**



 /escglobalgroup  
 @escpilesteel

 /escglobalgroup  
 /company/esc-global-group

 [www.escglobalgroup.com](http://www.escglobalgroup.com)  
 ESC Group