

TWR CONTROL TOWER, AUSTRALIA

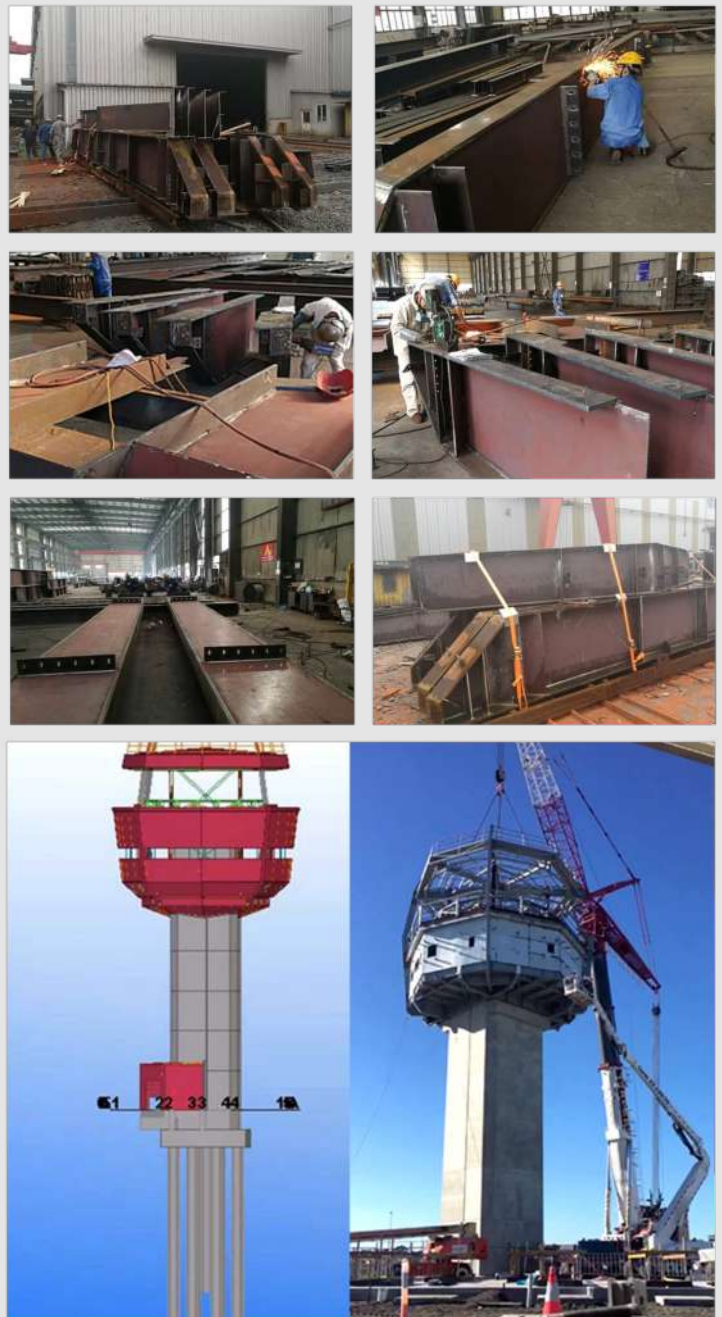
CASE STUDY

ESC Steel Structures was contracted to produce 100 metric tons of pre-engineered structural steel for a new air traffic control tower to be used for the RAAF Base Amberley, Australia.

The main project standard for the steel pre-engineering building structure was Australian Standard AS 4100 for materials, construction, fabrication and erection. The welds also required different extents of visual, radiographic and magnetic particle inspection as per AS 1554.1. The steel grades used for the sections and plates varied between Grade 250 and Grade 300.

Prior to production, ESC completed a comprehensive Inspection & Test Plan (ITP) with a breakdown of all the processes which included: welder qualification review, raw material inspection, component dimensional inspection, weld inspection and coating inspection. Strategic review, witness and certify hold points were incorporated for each of the stages. A 3rd party inspector was selected for the project as well by ESC and accepted by the client. After several iterations working with both the project client and consultant, the ITP was agreed and approved well before production started.

ESC successfully completed the full steel fabrication in September 2017. All components were carefully secured and packed in containers to be delivered to Queensland, Australia.



Get in Touch: T +852 8198 0239
E info@escsteelstructures.com
W www.escsteelstructures.com

ESC App available now on
all smartphones & tablets
Search for "ESC Group"

