



MODULAR TRANSPORT BEAM SYSTEM

MODULAR BEAM TRANSPORT PROJECT

Project Name	Modular Beam Transport System
Main Contractor	ALE Heavylift BV
Location	Netherlands, United Kingdom
Product	Transport Beams
Delivery Date	July 2013

INTRODUCTION

ESC was awarded the manufacture of an innovative heavy duty modular beam transport system with adjustable lengths, capable of carrying heavy assemblies for loadout such as container cranes, offshore towers. ESC carried out high precision, heavy duty fabrication.

There are 6 central beams with lugs on both ends and 4 end beams with lugs on one end only - to form a two sided 55 metre length platform that can be rolled along the ground.

Each of these beams was 1.55 metres height, 1.6 metres width and 10.7 metres in length. The steel grade high tensile steel grade S355J2G3. A complex configuration of lug holes that had to align in different planes meant the finished

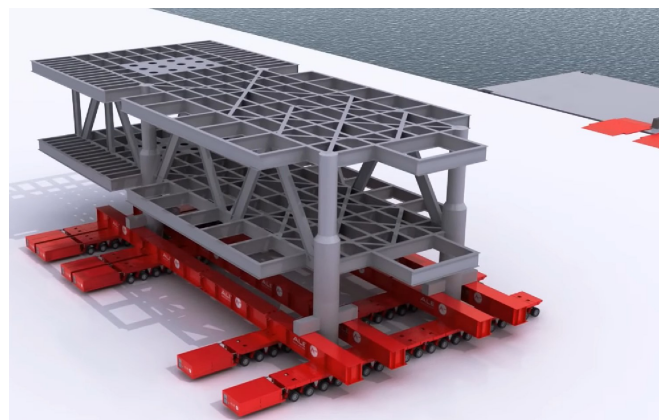
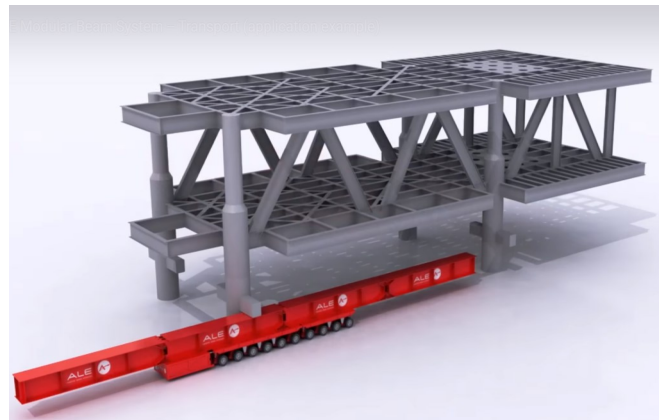
tolerances were critical in acceptance by the client of the steel beams. Qualified and highly skilled welders completed challenging welds due to difficult access within the beam structure. The beams were trial fitted in several configurations to ensure they mate together with no issues.

The project was successfully delivered in the United Kingdom in July 2013 and has since been reused for numerous heavy lifts.

ESC SCOPE OF SUPPLY

TRANSPORT BEAMS STRUCTURES

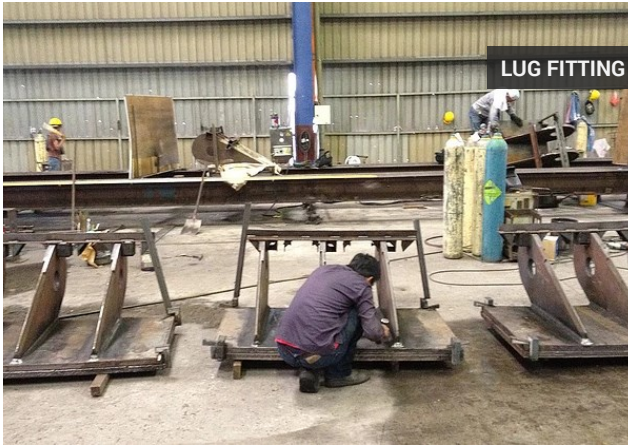
ESC's Malaysia facility was awarded the fabrication scope by globally respected heavy lifting and transport contractor ALE Heavylift BV based in the Netherlands in 2013 to produce 10 heavy transport beams, for a total of over 200 tons. These beams were to be utilised in a reusable platform for skidding large and heavy items for example, an oil platform on and off the sea.



Transport Beams Application Sample.



PROJECT PHOTOS



LUG FITTING



LUG FITTING



DRILLING LUG HOLES



DRILLING LUG HOLES



COATING COMPLETED



HEAVY LIFTING BEAM ON LOW LOADER



HEAVY LIFTING BEAM ON LOW LOADER