



DELIVERING TRENCH SHORING PRODUCTS TO THE GLOBAL MARKET

TRENCH SHORING SOLUTIONS CATALOGUE

2 0 2 4 E D I T I O N



A member of:



WWW.ESCTRENCHSHORING.COM



ESC TRENCH SAFETY SOLUTIONS

ESC has fully developed its Trench Shield Series (also known as Trench Boxes)

A two-sided, high-quality and economical excavation support system that provides a safe working environment in trenches up to 5.6 meters (40 feet) deep.

Produced in manufacturing facilities in Abu Dhabi, UAE, USA and Mexico. ESC's trench shields are a heavy duty

and robust product designed and manufactured in compliance with both National and International Standards.

All shields are certified by third party professional engineers, following the guidelines and recommendations of NAXSA (North American Excavation

Shoring Association), the requirements of requirements of the European Standards EN 131311 and comply with all OSHA Standards.

Table of CONTENTS

ESC Trench Safety Solutions	02
All About Trench Safety	04
Certificates & Design Verification	04
ESC Trench Shields	05
ESC Trench Shield Manhole Series	12
ESC Tapping Boxes	13
ESC Aluminium Trench Shields	14
ESC Modular Box Series	16
Spreader/Strut Solutions	17
Trench Shield Assembly Guide	18
Common Trench Sheets	20
Bedding Boxes	23
Product & Project Photos	22
ESC Product Catalogues	23

All About Trench Safety

The ESC trench boxes product range is specifically designed to cater to the requirements construction practices worldwide. ESC Trench Box Products have been verified and certified by a third-party professional Engineer.

Features

- ✓ Designed & manufactured in accordance with OSHA 29 CFR 1926.650, 29 CFR 1926.651 and CFR 1926.652, Sub-part P, Excavations.
- ✓ 3rd party product certificates available for all products.
- ✓ Heavy duty robust design.
- ✓ Flat pack delivery.
- ✓ Fixed or adjustable spreaders available in any required length.
- ✓ Custom box sizes are available.
- ✓ Follow NAXSA - Approved shoring shield Tab Data Sheet.
- ✓ All TSB Series panels are fully welded for maximum strength. No stitch welds or spot welds used.
- ✓ 3/4" standard push pads.
- ✓ Reinforced knife edge supplied as standard on 8ft and 10ft height shields. 4ft and 6ft shields supplied with flat bottoms as standard.
- ✓ Knife edge and flat bottom interchangeable on request.
- ✓ Heavy duty thick wall struts with articulated movements.
- ✓ High strength to weight ratio panel.
- ✓ Double reinforced top rail.
- ✓ Reinforced collar.
- ✓ Top box vertical connection.
- ✓ Through panel connection points with heavy duty locking pins.
- ✓ A four point through panel lifting system.
- ✓ Four-point lifting eye.
- ✓ Reinforced knife edge toe.
- ✓ Reinforced end channel.
- ✓ And all components are high strength steel.

Options

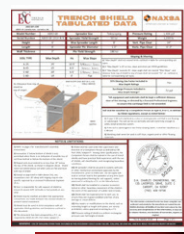
- ✓ Additional Stack pockets.
- ✓ Fifth lower spreader.
- ✓ Pulling Lugs.

Safety Guide

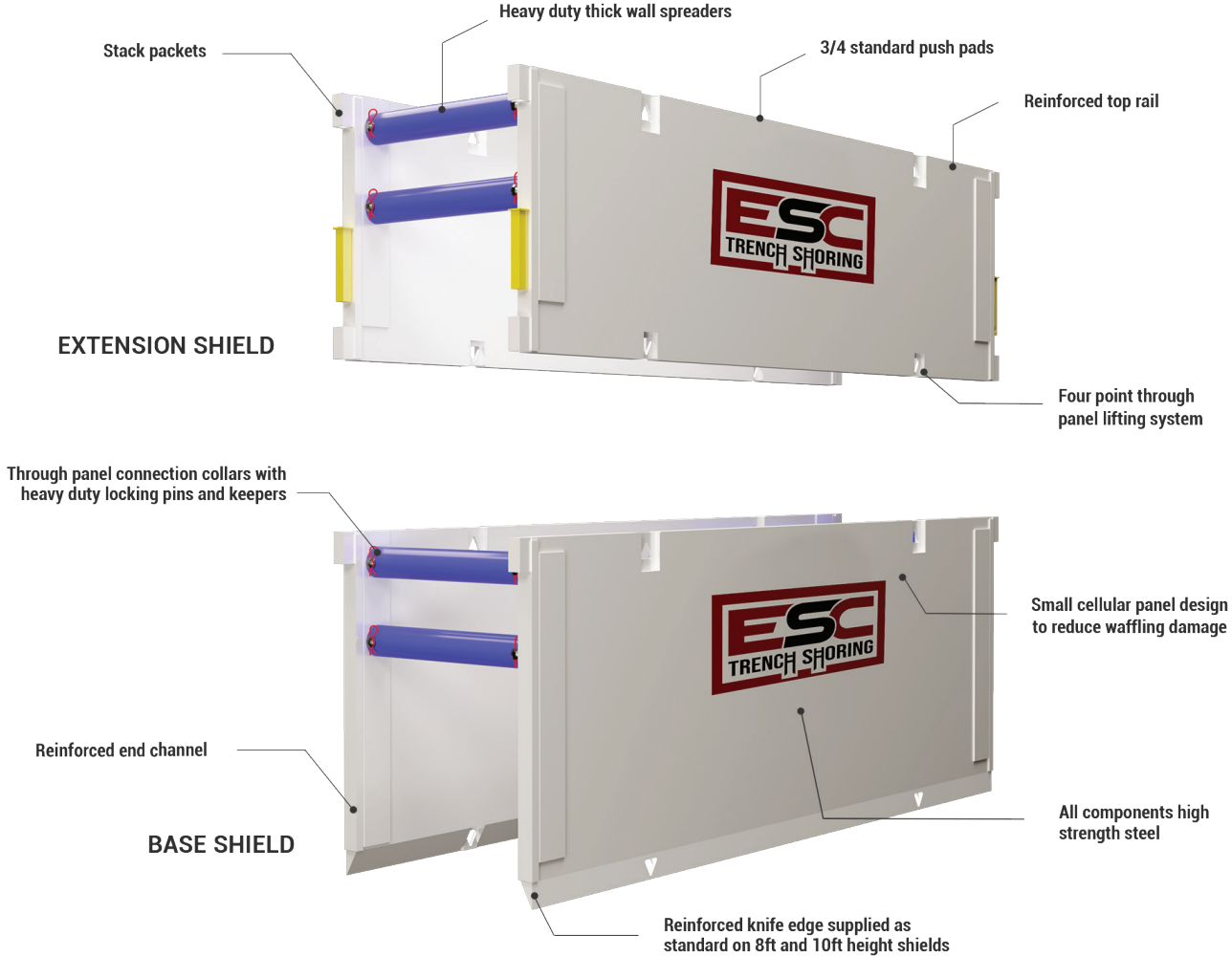
- ✓ Soil type to be determined by qualified competent person.
- ✓ Assembly as per ESC procedures.

- ✓ As member of NAXSA (North American Excavation Shoring Association), ESC adheres to all industry norms and regulations.
- ✓ Recommended maximum depth 5.6m (18.37 ft).

Certificates & Design Verification



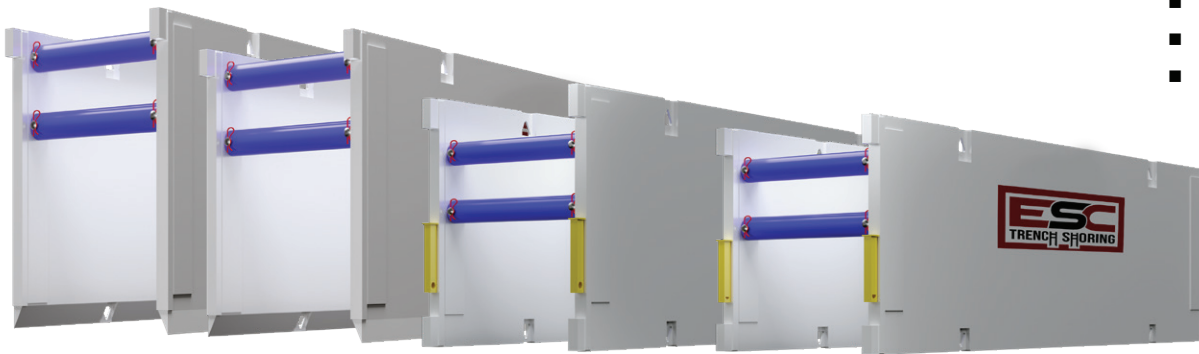
ESC TRENCH SHIELD



BUILT TO LAST
ROBUST CELLULAR DESIGN



- TSB4
- TSU4
- TSB6
- TSU6
- TSB8



ESC Trench Shield Series

ESC's trench shoring product line comprises of 1.2m, 1.8m and 2.4m (4ft, 6ft, 8ft and 10ft) panel heights and a range of panel lengths from 3m to 7.3m (10ft to 24ft). Each panel size is available in 101.6mm, 152.4mm, or 203.2mm (4", 6" or 8") thickness depending

on the end user requirements. All the shields are stackable and may be used as extension shields to achieve protection in deeper trench cuts.

Heavy duty spreaders are available in a

variety of fixed lengths, or alternatively adjustable length spreaders may be used to achieve a range of excavation widths.

ESC Trench Shield Series

4" TSB SERIES

TECHNICAL SPECIFICATIONS

SERIES	HEIGHT BY LENGTH		WEIGHT		PIPE CLEARANCE		LENGTH BETWEEN SPREADERS		SHIELD CAPACITY		MAX EXCAVATION DEPTH					
	H X L		(2 x panels)		CH		CL				B45-Soil		C-60 Soil		C-80 Soil	
	ft	m	lb	kg	in	mm	ft	m	psf	kPa	ft	m	ft	m	ft	m
TSB4-410	4 x 10	1.2 x 3.0	2992	1357	18	457	7'11"	2.41	4486	215	40	12.2	40	12.2	30	9.1
TSB4-412	4 x 12	1.2 x 3.7	3402	1543	18	457	9'11"	3.02	2871	137	40	12.2	40	12.2	30	9.1
TSB4-416	4 x 16	1.2 x 4.9	4221	1915	18	457	13'11"	4.24	1465	70	33	10.1	25	7.6	19	5.8
TSB4-420	4 x 20	1.2 x 6.1	5665	2570	18	457	17'11"	5.46	1053	50	24	7.3	18	5.5	14	4.3
TSB4-610	6 X 10	1.8 x 3.0	4074	1848	40	1016	7'11"	2.41	3000	144	40	12.2	40	12.2	30	9.1
TSB4-612	6 x 12	1.8 x 3.7	4594	2084	40	1016	9'11"	3.02	2748	132	40	12.2	40	12.2	30	9.1
TSB4-616	6 x 16	1.8 x 4.9	5738	2603	40	1016	13'11"	4.24	1402	67	33	10.1	25	7.6	20	6.1
TSB4-620	6 x 20	1.8 x 6.1	7871	3570	40	1016	17'11"	5.46	1020	49	24	7.3	19	5.8	15	4.6
TSB4-810	8 x 10	2.4 x 3.0	4906	2225	60	1524	7'11"	2.41	2150	103	40	12.2	39	11.9	30	9.1
TSB4-812	8 x 12	2.4 x 3.7	5627	2552	60	1524	9'11"	3.02	1780	85	40	12.2	32	9.8	25	7.6
TSB4-816	8 x 16	2.4 x 4.9	7068	3206	60	1524	13'11"	4.24	1334	64	40	12.2	25	7.6	20	6.1
TSB4-820	8 x 20	2.4 x 6.1	9923	4501	60	1524	17'11"	5.46	971	46	24	7.3	19	5.8	15	4.2

- ✓ All 1.2m and 1.8m (4ft and 6ft) shields can be used as Extension Shields.
- ✓ Depth ratings include consideration of surcharge load of 351.5kg/m² (72 psf).
- ✓ As per NAXSA recommendations, depth of cut has been limited to 40ft for types A, B and C60 soil, and 30ft for C80 soil regardless of the capacity of the shield. If deeper cuts are required, it is recommended that a professional engineer is engaged to evaluate the site and soil conditions and specify a suitable trench shield or other shoring solution.



ESC Trench Box Series

4" TSU SERIES

TECHNICAL SPECIFICATIONS

SERIES	HEIGHT BY LENGTH		WEIGHT		PIPE CLEARANCE		LENGTH BETWEEN SPREADERS		SHIELD CAPACITY		MAX EXCAVATION DEPTH					
	H X L		(2 x panels)		CH		CL				B-45 Soil		C-60 Soil	C-80 Soil		
	ft	m	lb	kg	in	mm	ft	m	psf	kg/ m ²	ft	m	ft	m	ft	m
TSU4-416	4 x 16	1.22 x 4.88	4259	1932	16"	406	13'-11"	4.24	1651	8060	37	11.2	28	8.5	22	6.7
TSU4-420	4 x 20	1.22 x 6.10	5122	2323	16"	406	17'-11"	5.46	977	4770	22	6.7	17	5.2	13	3.9
TSU4-612	6 x 12	1.8 x 3.7	4533	2056	40"	1016	9'-11"	3.02	2820	13768	40	12.2	40	12.1	30	9.1
TSU4-616	6 x 16	1.8 x 4.9	5736	2601	40"	1016	13'-11"	4.24	1620	7909	37	11.2	29	8.8	22	6.7
TSU4-620	6 x 20	1.8 x 6.1	6887	3123	40"	1016	17'-11"	5.46	959	4682	23	7.01	18	5.4	14	4.2
TSU4-624	6 x 24	1.8 x 7.3	8046	3649	40"	1016	21'-11"	6.68	643	3139	16	4.87	13	3.9	10	3
TSU4-810	8 x 10	2.4 x 3.1	5261	2386	64"	1626	7'-11"	2.41	2400	11717	40	12.2	40	12.1	30	9.1
TSU4-812	8 x 12	2.4 x 3.7	5918	2684	64"	1626	9'-11"	3.02	2409	11761	40	12.2	40	12.1	30	9.1
TSU4-816	8 x 16	2.4 x 4.9	7658	3473	64"	1626	13'-11"	4.24	1560	7616	37	11.2	29	8.8	23	7.01
TSU4-820	8 x 20	2.4 x 6.1	8997	4080	64"	1626	17'-11"	5.46	950	4638	24	7.3	19	5.8	15	1.5
TSU4-824	8 x 24	2.4 x 7.3	10709	4857	64"	1626	21'-11"	6.68	650	4638	17	5.1	14	4.2	11	3.3
TSU4-1020	10 x 20	3.0 x 6.1	10999	4988	84"	2134	17'-11"	5.46	930	4540	24	7.3	19	5.8	16	4.8

Options

- ✓ Knife edge or flat bottom
- ✓ 5th spreader collar



ESC Trench Box Series

6" TSB SERIES

TECHNICAL SPECIFICATIONS

SERIES	HEIGHT BY LENGTH		WEIGHT		PIPE CLEARANCE		LENGTH BETWEEN SPREADERS		SHIELD CAPACITY		MAX EXCAVATION DEPTH					
	H X L		(2 x panels)		CH		CL				B45-Soil		C-60 Soil	C-80 Soil		
	ft	m	lb	kg	in	mm	ft	m	psf	kpa	ft	m	ft	m	ft	m
TSB6-416	4 x 16	1.2 x 4.9	4896	2221	18	457	13'11"	4.24	2518	121	40	12.2	40	12.2	30	9.1
TSB6-420	4 x 20	1.2 x 6.1	5857	2657	18	457	17'11"	5.46	1523	73	34	10.4	26	7.9	20	6.1
TSB6-424	4 x 24	1.2 x 7.3	7605	3450	18	457	21'11"	6.68	1181	57	27	8.2	20	6.1	16	4.9
TSB6-616	6 X 16	1.8 x 4.9	6532	2963	40	1016	13'11"	4.24	2358	113	40	12.2	40	12.2	30	9.1
TSB6-620	6 x 20	1.8 x 6.1	7842	3557	40	1016	17'11"	5.46	1426	68	33	10.1	26	7.9	20	6.1
TSB6-624	6 x 24	1.8 x 7.3	10411	4722	40	1016	21'11"	6.68	1127	54	26	7.9	21	6.4	16	4.9
TSB6-816	8 x 16	2.4 x 4.9	7922	3593	64	1626	13'11"	4.24	2030	97	40	12.2	37	11.3	28	8.5
TSB6-820	8 x 20	2.4 x 6.1	10897	4943	64	1626	17'11"	5.46	1573	75	37	11.3	29	8.8	23	7.0
TSB6-824	8 x 24	2.4 x 7.3	12762	5789	64	1626	21'11"	6.68	1053	50	26	7.9	20	6.1	16	4.9
TSB6-1016	10 x 16	3.0 x 4.9	9403	4265	76	1930	13'11"	4.24	1501	72	37	11.3	29	8.8	23	7.0
TSB6-1020	10 x 20	3.0 x 6.1	13330	6046	76	1930	17'11"	5.46	1338	64	33	10.1	26	7.9	21	6.4
TSB6-1024	10 x 24	3.0 x 7.3	15624	7087	76	1930	21'11"	6.68	1046	50	27	8.2	21	6.4	17	5.2

- ✓ All 1.2m and 1.8m (4' and 6') shields can be used as Extension Shields.
- ✓ Depth ratings include consideration of surcharge load of 351.5kg/m² (72 psf).
- ✓ As per NAXSA recommendations, depth of cut has been limited to 40ft for types A, B and C60 soil, and 30ft for C80 soil regardless of the capacity of the shield. If deeper cuts are required, it is recommended that a professional engineer is engaged to evaluate the site and soil conditions and specify a suitable trench shield or other shoring solution.



ESC TSU Trench Box Series

6" TSU SERIES

TECHNICAL SPECIFICATIONS																
MODEL	HEIGHT BY LENGTH		WEIGHT		PIPE CLEARANCE		LENGTH BETWEEN SPREADERS		SHIELD CAPACITY		MAX EXCAVATION DEPTH					
	H	L	(2 x panels)		CH		CL				B-45 Soil		C-60 Soil		C-80 Soil	
	ft	m	lb	kg	in	mm	ft	m	psf	kg/m ²	ft	m	ft	m	ft	m
TSU6-820	8 x 20	2.4 x 6.1	10080	4571	64"	1626	17'-11"	5.46	1550	7567	37	11.2	29	8.8	22	6.7
TSU6-824	8 x 24	2.4 x 7.3	11797	5350	64"	1626	21'-11"	6.68	1009	4926	25	7.6	20	6.1	16	4.8
TSU6-1012	10 x 12	3.0 x 3.7	8142	3693	84"	2134	13'-11"	4.24	2020	9862	40	12.2	37	11.2	29	8.8
TSU6-1020	10 x 20	3.0 x 6.1	12075	5476	84"	2134	17'-11"	5.46	1170	5712	29	8.8	23	7.01	19	5.8

Options

- ✓ Knife edge or flat bottom
- ✓ 5th spreader collar

ESC Trench Box Series

8" TSB SERIES

TECHNICAL SPECIFICATIONS

SERIES	HEIGHT BY LENGTH		WEIGHT		PIPE CLEARANCE		LENGTH BETWEEN SPREADERS		SHIELD CAPACITY		MAX EXCAVATION DEPTH					
	H X L		(2 x panels)		CH		CL				B45 - Soil		C-60 Soil		C-80 Soil	
	ft	m	lb	kg	in	mm	ft	m	psf	kpa	ft	m	ft	m	ft	m
TSB8-416	4 x 16	1.2 x 4.9	5720	2595	18	457	13'11"	4.24	3878	186	40	12.2	40	12.2	30	9.1
TSB8-420	4 x 20	1.2 x 6.1	6876	3119	18	457	17'11"	5.46	2346	112	40	12.2	40	12.2	30	9.1
TSB8-424	4 x 24	1.2 x 7.3	8033	3644	18	457	21'11"	6.68	1571	75	35	10.7	27	8.2	21	6.4
TSB8-616	6 X 16	1.8 x 4.9	7563	3431	40	1016	13'11"	4.24	3150	151	40	12.2	40	12.2	30	9.1
TSB8-620	6 x 20	1.8 x 6.1	9119	4136	40	1016	17'11"	5.46	2172	104	40	12.2	38	11.6	29	8.8
TSB8-624	6 x 24	1.8 x 7.3	10676	4843	40	1016	21'11"	6.68	1454	70	34	10.4	26	7.9	20	6.1
TSB8-816	8 x 16	2.4 x 4.9	9175	4162	64	1626	13'11"	4.24	2030	97	40	12.2	37	11.3	28	8.5
TSB8-820	8 x 20	2.4 x 6.1	12380	5615	64	1626	17'11"	5.46	1620	78	38	11.6	30	9.1	23	7.0
TSB8-824	8 x 24	2.4 x 7.3	14526	6589	64	1626	21'11"	6.68	1350	65	32	9.8	25	7.6	20	6.1
TSB8-1016	10 x 16	3.0 x 4.9	11252	5104	76	1930	13'11"	4.24	1680	80	40	12.2	32	9.8	25	7.6
TSB8-1020	10 x 20	3.0 x 6.1	13547	6145	76	1930	17'11"	5.46	1345	64	33	10.1	26	7.9	21	6.4
TSB8-1024	10 x 24	3.0 x 7.3	18142	8229	76	1930	21'11"	6.68	1120	54	28	8.5	22	6.7	18	5.5

- ✓ All 1.2m and 1.8m (4' and 6') shields can be used as Extension Shields.
- ✓ Depth ratings include consideration of surcharge load of 351.5kg/m² (72 psf).
- ✓ As per NAXSA recommendations, depth of cut has been limited to 12m (40ft) for types A, B and C60 soil, and 9m (30ft) for C80 soil regardless of the capacity of the shield. If deeper cuts are required, it is recommended that a professional engineer is engaged to evaluate the site and soil conditions and specify a suitable trench shield or other shoring solution.



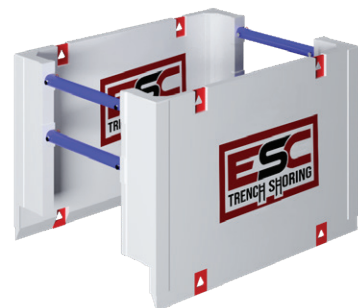
ESC Trench Shield Manhole Series

4" MANHOLE SERIES

TECHNICAL SPECIFICATION																
SERIES	HEIGHT BY LENGTH		WEIGHT		PIPE CLEARANCE		LENGTH BETWEEN SPREADERS		SHIELD CAPACITY		MAX EXCAVATION DEPTH					
	H X L		(2 x panels)		CH		CL				B45-Soil		C-60 Soil		C-80 Soil	
	ft	m	lb	kg	in	mm	ft	m	psf	kg/m ²	ft	m	ft	m	ft	m
MSB4-48	4 x 8	1.2 x 2.4	2826	1281	24	609	7'2"	2.20	2400	11712	53	16.15	40	12.19	30	9.14
MSB4-410	4 x 10	1.2 x 3.1	3143	1425	24	609	9'2"	2.79	2400	11712	53	16.15	40	12.19	30	9.14
MSB4-68	6 x 8	2.4 x 2.4	3775	1712	48	1219	7'2"	2.20	2200	10741	49	14.93	37	11.27	28	8.53
MSB4-610	6 X 10	2.4 x 3.1	4276	1940	48	1219	9'2"	2.79	2200	10741	49	14.93	37	11.27	28	8.53
MSB4-88	8 x 8	2.4 x 2.4	4672	2119	52	1320	7'2"	2.20	2100	10248	47	14.33	35	10.67	25	7.62
MSB4-810	8 X 10	2.4 x 3.1	5358	2430	52	1320	9'2"	2.79	2100	10248	47	14.33	35	10.67	25	7.62
MSB4-1010	10 X 10	3.1 x 3.1	6442	2922	76	1930	9'2"	2.79	2000	9764	47	14.33	35	10.67	25	7.62

ESC Manhole Boxes provide a four-wall shield for utmost worker safety. They are specially built for maintenance hole installations, tie-ins, and repair work. ESC Manhole Boxes offer the flexibility you need with the protection compliant with OSHA requirements. Manhole boxes can be used in combination with the standard trench shields for different applications.

12.7mm (.5") sch 80 spreaders



ESC X Series 4-Sided Manhole Boxes

4" MANHOLE SERIES

TECHNICAL SPECIFICATIONS																
SERIES	HEIGHT BY LENGTH		WEIGHT		PIPE CLEARANCE		LENGTH BETWEEN SPREADERS		SHIELD CAPACITY		MAX EXCAVATION DEPTH					
	H X L		(2 x panels)		CH		CL				B45-Soil		C-60 Soil		C-80 Soil	
	ft	m	lb	kg	in	mm	ft	m	psf	kPa	ft	m	ft	m	ft	m
XMH4-48	4x8	1.2 x 2.4	3000	1361	15"	381	6' 11.75"	2.13	2500	120	30'	9.15	35'	10.67	30'	9.15
XMH4-410	4x10	1.2 x 3.1	3500	1588	15"	381	8' 11.75"	2.74	2500	120	30'	9.15	35'	10.67	30'	9.15
XMH4-412	4x12	1.2 x 3.7	4000	1815	15"	381	10' 11.75"	3.35	2500	120	30'	9.15	35'	10.67	30'	9.15
XMH4-88	8x8	2.4 x 2.4	5200	2359	63"	1600	6' 11.75"	2.13	3012	145	40'	12.2	40'	12.2	30'	9.15
XMH4-810	8x10	2.4 x 3.1	5700	2586	63"	1600	8' 11.75"	2.74	1934	93	40'	12.2	32'	9.76	24'	7.32
XMH4-812	8x12	2.4 x 3.7	6100	2767	63"	1600	10' 11.75"	3.35	1628	78	36'	10.98	27'	8.23	20'	7.32



ESC X Series 4-Sided Tapping Boxes AND STACKERS

TECHNICAL SPECIFICATIONS														
SERIES	HEIGHT BY LENGTH		WEIGHT		LENGTH BETWEEN SPREADERS		CAPACIDAD DEL ENTIBADO		MAX EXCAVATION DEPTH					
	H X L		(2 x panels)		CL				B45-Soil		C-60 Soil		C-80 Soil	
	ft		lb	kg	ft	m	psf	kPa	ft	m	ft	m	ft	m
XTB4-48	4x8	1.2 x 2.4	3500	1588	7' 4"	2.54	2900	139	40'	12.2	40'	12.2	40'	12.2
XTB4-410	4x10	1.2 x 3.1	3800	1724	9' 4"	2.85	2900	139	40'	12.2	40'	12.2	40'	12.2
XTB4-412	4x12	1.2 x 3.7	4100	1860	11' 4"	3.46	2900	139	40'	12.2	40'	12.2	40'	12.2
XTB4-88	8x8	2.4 x 2.4	5000	2268	7' 4"	2.54	2909	140	40'	12.2	40'	12.2	30'	9.15
XTB4-810	8x10	2.4 x 3.1	6000	2722	9' 4"	2.85	2304	111	40'	12.2	37'	11.28	27'	8.23
XTB4-812	8x12	2.4 x 3.7	7000	3176	11' 4"	3.46	2000	96	40'	12.2	31'	9.45	25'	7.62



Options

- ✓ Optional knife edge or flat bottom
- ✓ Trapezoid cutouts 9.8m x 16.4m (3' x 5')



ESC Aluminium Trench Shield Series

ESC Trench Shoring's ABX Aluminium Trench Shields are lightweight and high strength. Built from high grade tempered aluminium, ESC offer a standard range or can custom build a shield to suit your requirements.



Features & Benefits

- ✓ Certified by US Professional Engineer.
- ✓ Constructed from 6061-T6 Aluminium Alloy.
- ✓ 76.2mm (3") wall thickness.
- ✓ 101.6mm (4") steel spreader thickness.
- ✓ Custom lengths on request.
- ✓ Lifting lugs.
- ✓ Largest working range in the industry.
- ✓ Adjustable vertical height clearance.
- ✓ Lengths up to 4.9m (16ft).
- ✓ 1.8m and 2.4m (6ft and 8ft) panel heights.
- ✓ Easy to install.
- ✓ Light weight.
- ✓ Ideal for minor construction activities such as routine maintenance work and basic repairs.
- ✓ Foam filling is standard on all Aluminium Boxes.

 **ABX3-6**

 **ABX3-8**



6' ALUMINIUM TRENCH SHIELD SERIES 3" WALL

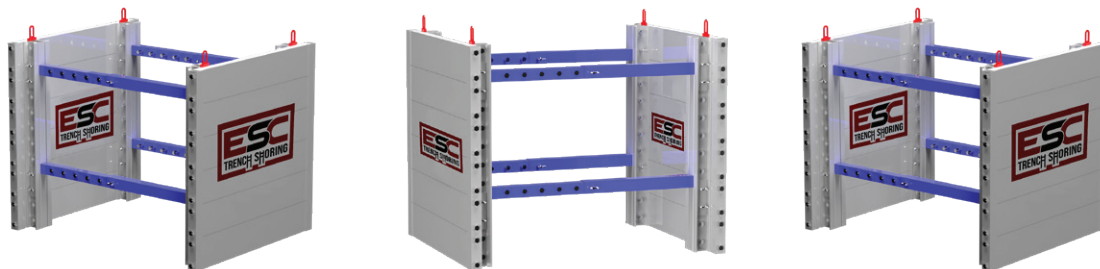
TECHNICAL SPECIFICATIONS

SERIES	HEIGHT BY LENGTH		WEIGHT		PIPE CLEARANCE		LENGTH BETWEEN SPREADERS		SHIELD CAPACITY		MAX EXCAVATION DEPTH					
	H X L		(2 x panels)		CH		CL		psf	kg/m ²	B45-Soil		C-60 Soil		C-80 Soil	
	ft	m	lb	kg	in	mm	ft	m			ft	m	ft	m	ft	m
ABX3-68	6 x 8	2.1 x 2.7	1,031	468	34	863	6'2"	1.9	1404	6851	25	7.62	20	6.1	18	5.5
ABX3-610	6 x 10	2.1 x 3.4	1,200	545	34	863	8'2"	2.5	1124	5485	25	7.62	20	6.1	16	4.9
ABX3-612	6 x 12	2.1 x 4.1	1,369	621	34	863	10'2"	3.1	936	4567	22	7.62	17	5.2	14	4.3
ABX3-614	6 x 14	2.1 x 4.8	1,538	698	34	863	12'2"	3.7	803	3918	19	5.79	15	4.6	12	3.7
ABX3-616	6 x 16	2.1 x 5.5	1,707	775	34	863	14'2"	4.3	634	3093	15	4.57	12	3.7	10	3.1

8' ALUMINIUM TRENCH SHIELD SERIES 3" WALL

TECHNICAL SPECIFICATIONS

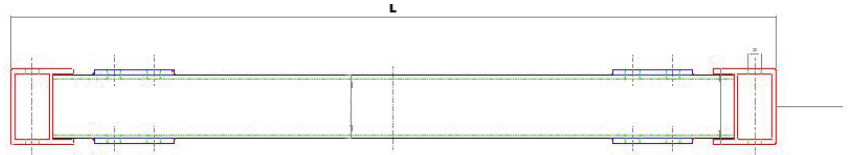
SERIES	HEIGHT BY LENGTH		WEIGHT		PIPE CLEARANCE		LENGTH BETWEEN SPREADERS		SHIELD CAPACITY		MAX EXCAVATION DEPTH					
	H X L		(2 x panels)		CH		CL		psf	kg/m ²	B45-Soil		C-60 Soil		C-80 Soil	
	ft	m	lb	kg	in	mm	ft	m			ft	m	ft	m	ft	m
ABX3-88	8 x 8	2.7 x 2.7	1,371	622	40	1016	6'2"	1.9	1,229	5997	25	7.6	20	6.1	18	5.5
ABX3-810	8 x 10	2.7 x 3.4	1,597	725	40	1016	8'2"	2.5	982	4792	24	7.3	19	5.8	15	4.6
ABX3-812	8 x 12	2.7 x 4.1	1,823	827	40	1016	10'2"	3.1	819	3996	21	6.4	16	4.9	13	4.0
ABX3-814	8 x 14	2.7 x 4.8	2,048	929	40	1016	12'2"	3.7	640	3123	17	5.2	13	4.0	11	3.4
ABX3-816	8 x 16	2.7 x 5.5	2,274	1,032	40	1016	14'2"	4.3	475	2318	13	4.0	11	3.4	9	2.7





ESC Modular Box Series

2.8" PANEL SERIES



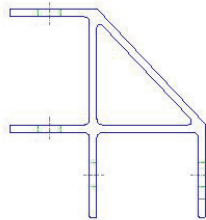
TECHNICAL SPECIFICATIONS

SERIES	HEIGHT BY LENGTH		WEIGHT		SHIELD CAPACITY		MAX EXCAVATION DEPTH					
	H X L		(2 x panels)		psf	kg/m ²	B-45 Soil		C-60 Soil		C-80 Soil	
	ft	m	lb	kg			ft	m	ft	m	ft	m
AP3-22	2 x 2	0.6 x 0.6	35	15.8	2250	10,985	50	15.2	40	12.1	30	9.1
AP3-24	2 x 4	0.6 x 1.2	63	28.5	2237	10,921	50	15.2	40	12.1	30	9.1
AP3-26	2 x 6	0.6 x 1.8	92	41.7	1491	7,297	50	15.2	40	12.1	30	9.1
AP3-28	2 x 8	0.6 x 2.4	120	54.4	1119	5,463	37	11.2	28	8.5	21	6.4
AP3-210	2 x 10	0.6 x 3.0	148	67.1	895	4,369	23	7.0	18	5.4	13	3.9
AP3-212	2 x 12	0.6 x 3.6	177	80.2	746	3,642	16	4.8	12	3.6	9	2.7
AP3-214	2 x 14	0.6 x 4.2	205	92.9	558	2,742	12	3.6	9	2.7	7	2.1
AP3-216	2 x 16	0.6 x 4.8	233	105.6	425	2,075	9	2.7	7	2.1	5	1.5

CORNER END POSTS

TECHNICAL SPECIFICATIONS

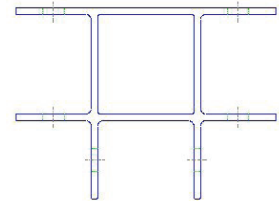
SERIES	LENGTH		WEIGHT	
	ft	m	lb	kg
ACC-2	2	0.6	14	6.3
ACC-4	4	1.2	29	13.1
ACC-6	6	1.8	43	19.5
ACC-8	8	2.4	57	25.8
ACC-10	10	3.0	72	32.6
ACC-12	12	3.6	86	39.0



THREE WAY T POSTS

TECHNICAL SPECIFICATIONS

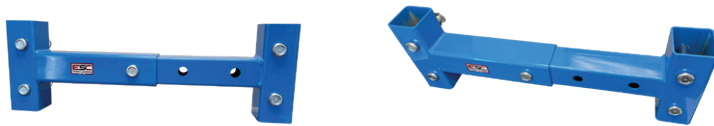
SERIES	LENGTH		WEIGHT	
	ft	m	lb	kg
ATC-2	2	0.6	19	8.6
ATC-4	4	1.2	38	17.2
ATC-6	6	1.8	57	25.8
ATC-8	8	2.4	76	34.4
ATC-10	10	3.0	95	43.0
ATC-12	12	3.6	114	51.7



Spreader/Strut Solutions



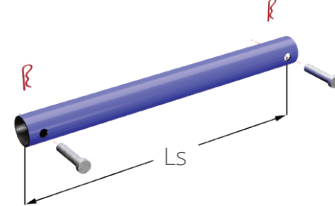
AS SERIES ALUMINIUM TRENCH SHIELDS



AS SERIES COMMON ADJUSTABLE STRUTS

AS SPREADER RANGE						
REFERENCE	MIN LENGTH		MAX LENGTH		WEIGHT	
	in	mm	in	mm	lb	Kg
	AS3 +AS4					
AS-3036	30	762	36	914	78.59	35.65
AS-3648	36	914	48	1219	92.52	41.97
AS-4260	42	1066	60	1524	108.76	49.33
AS-5484	54	1371	84	2133	136.60	61.96
AS-6096	60	1524	96	2438	150.52	68.27
AS-72120	72	1828	120	3048	183.04	83.03
AS-84144	84	2133	144	3657	210.90	95.66

SN8 SERIES STEEL TRENCH SHIELDS



SN8 SERIES FIXED LENGTH SPREADERS

TECHNICAL SPECIFICATIONS				
MODEL	LENGTH		WEIGHT	
	Ls		(per spreader)*	
	in	mm	lb	kg
SN8-24	24	610	87	39
SN8-30	30	762	108	49
SN8-36	36	914	130	59
SN8-42	42	1067	152	69
SN8-48	48	1219	174	79
SN8-54	54	1372	195	88
SN8-60	60	1524	217	98
SN8-66	66	1676	239	108
SN8-72	72	1829	260	118
SN8-78	78	1981	282	128
SN8-84	84	2134	304	138
SN8-96	96	2438	347	157
SN8-108	108	2743	391	177
SN8-120	120	3048	434	197
SN8-144	144	3658	521	236
SN8-168	168	4267	607	275

* *SN Series* spreaders are for standard steel trench shields;

* *AS Series* spreaders are for aluminium trench shields.

* spreader weights exclude weights of pins and keepers

ESC Trench Shield Assembly Guide

ESC Trench Shields are easy to assemble. It is advisable for users to strictly follow the procedures supplied by ESC.

A. Flat pack delivery.



B. Cut packing straps/lift top panel.



C. Erect 4 spreaders, insert pin and R-clip.

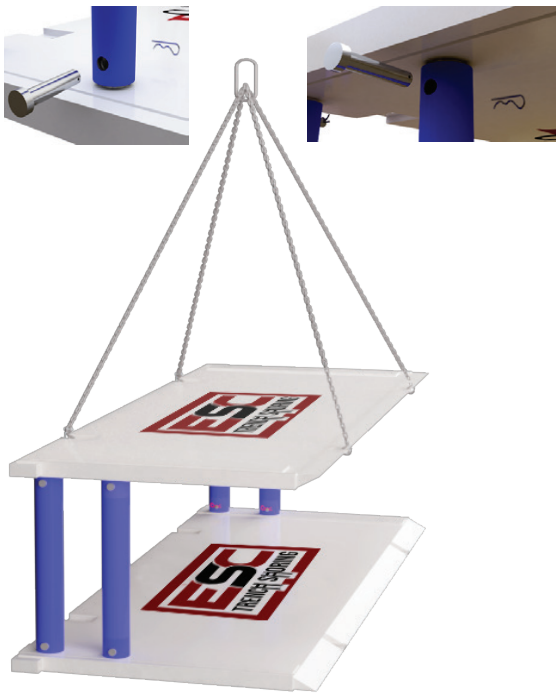


SAFETY TIPS

- ✓ Remember to inspect lifting points prior to every lifting operation and ensure that all personnel are well informed of the operation.
- ✓ Ensure all pins and retaining clips are correctly fitted.
- ✓ Use only certified lifting slings.
- ✓ Assemble on flat ground.

Assembly Guide

D. Place top panel, pins and R-clips.



E. Rotate shield.



F. Install completed shield on site.



SAFETY TIPS

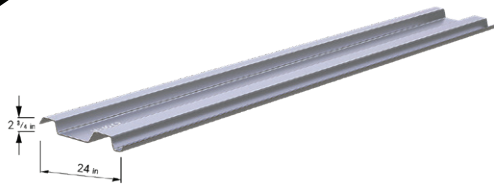
- ✓ Do not allow personnel to enter the box/shield while excavator is moving the trench shield/box.
- ✓ Always ensure the shield/box is evenly supported by the ground to avoid shield/box becoming unstable.
- ✓ Do not use box if panel, pins or spreaders are damaged.
- ✓ Use only components supplied by ESC.



Common Trench Sheets

ESC trench sheet products offer a highly efficient retention system for shallow excavations. ESC trench sheets can be used to support earth banks for the safety of construction workers, and are ideal for reinforcement of waterway banks and services trenches. The strength, speed and flexibility of light trench sheets makes them ideal for all forms of temporary and permanent works. The trench sheets also offer good durability and ease of installation and extraction allows sustainable construction.

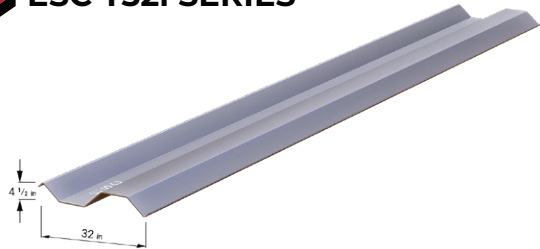
ESC T24i SERIES



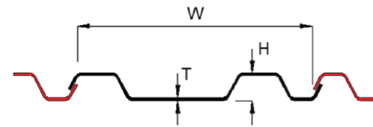
ESC T30i SERIES



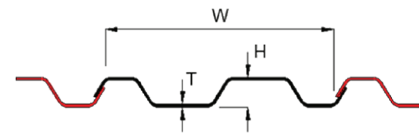
ESC T32i SERIES



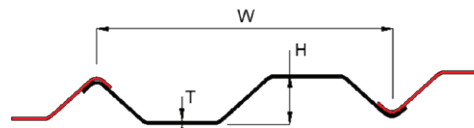
TECHNICAL SPECIFICATIONS							
SECTION	WIDTH	HEIGHT	THICKNESS	UNIT WEIGHT		SECTION MODULUS	MOMENT OF INERTIA
	W	H	T	Section	Wall		
	in	in	in	lb/ft	lb/ft ²	in ³	in ⁴
	mm	mm	mm	kg/m	kg/m ²	cm ³	cm ⁴



ESC-T24iA	23 3/4 603.25	2 3/4 69.58	3/16 4.76	18.8 28.04	9.5 46.38	4.3 70.46	5.8 241.41
ESC-T24iB	23 3/4 603.25	2 3/4 69.58	1/4 6.35	25.1 37.35	12.7 62.01	5.6 91.77	7.6 316.34
ESC-T24iC	23 5/8 600.08	2 7/8 73.03	5/16 7.94	31.7 47.10	16.1 78.61	6.9 113.07	10.0 416.23



ESC-T30iA	30 762	3 3/4 95.25	1/4 6.35	33.5 49.85	13.4 65.42	10.2 167.15	18.4 765.87
ESC-T30iB	30 762	3 3/4 95.25	3/8 9.53	50.3 74.85	20.1 98.14	13.9 227.78	26.1 1,086.36



ESC-T32i	32 812.80	4 1/2 114.30	3/8 9.53	50.2 74.71	18.8 91.79	17.3 283.50	38.1 1,585.84
----------	--------------	-----------------	-------------	---------------	---------------	----------------	------------------



ESC Bedding Boxes

ESC Trench Shoring bedding boxes offer you a convenient way to manage your trench bedding materials wisely. Utilizing a bedding box allows you to move the material quickly and efficiently to and from the trench precisely when and where needed.

ESC heavy-duty bedding boxes are reinforced to provide you with durability and reusability to ensure high performance on every job.

ESC bedding boxes can accommodate all of your multipurpose construction requirements. Made with sturdy high tensile steel, well equipped to suit your every project need, maximizing efficiency at the job site.

Features

- ✓ Heavy-duty design;
- ✓ Welded lifting bar;
- ✓ Lifting lugs;
- ✓ Stackable;

Benefits

- ✓ Production safety;
- ✓ Eliminates project delays;
- ✓ Reduces costly labors;
- ✓ Multipurpose construction use;

Options

- ✓ Adjustable lift bar;
- ✓ Wheel Kit;
- ✓ Custom Sizes and Designs Available;

TECHNICAL SPECIFICATIONS										
MODEL NUMBER	OUTSIDE DIMENSION (in)			ID	WEIGHT	CAPACITY	INSIDE DIMENSIONS (in)			GRAB BAR
	LENGTH	WIDTH	HEIGHT				in	lbs	cu. yds.	
ESC-BB-2	8' 3"	4' 0"	3' 0"	40"	2,340	2	1/4"	3/8"	3/8"	5" SCH 80
ESC-BB-3	10' 0"	4' 9"	3' 6"	42"	2,730	3	1/4"	3/8"	3/8"	5" SCH 80
ESC-BB-5	13' 6"	5' 4"	3' 6"	54"	3,975	5	1/4"	3/8"	5/8"	6" SCH 80
ESC-BB-7	14' 6"	5' 9"	4' 0"	60"	5,100	7	1/4"	3/8"	5/8"	8" SCH 80
ESC-BB-7W	13' 4"	7' 0"	4' 0"	72"	5,850	7	1/4"	3/8"	5/8"	8" SCH 80
ESC-BB-9	15' 6"	6' 7"	4' 0"	69"	5,990	9	1/4"	3/8"	5/8"	8" SCH 80
ESC-BB-12	18' 6"	7' 2"	4' 0"	76"	8,700	12	1/2"	1/2"	3/4"	8" SCH 120

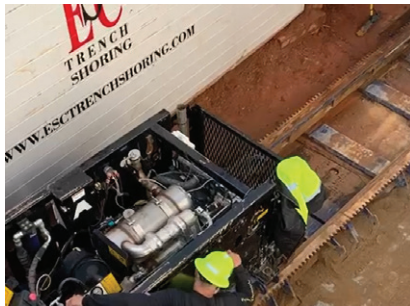


BUILT FOR THE TOUGHEST WORKING CONDITIONS

Product & Project Photos



Product & Project Photos



Product & Project Photos



ESC Product Catalogues

You may download all our product catalogues on this <https://www.estrenchshoring.com/downloads> or request via email: info@estrenchshoring.com. If you are viewing online, you may click on the image below to download.



ESC Capability Statement



Marine & Foundation Piling Catalogue



Vinyl Sheet Pile Catalogue



Vinyl Sheet Pile Installation Guide



Sheet Pile Installation Procedures



Steel Structures Brochure



Marine Mooring Bollards Catalogue



Port & Offshore Structures
Capability Statement



Marine Fender Catalogue



Project Case Study - Book I



Project Case Study - Book II



Project Case Study - Book III



Combination Walls Project
Case Study



Steel Pipes Projects
Case Study

ESC CAPABILITY
STATEMENT

MARINE & FOUNDATION
PILING CATALOGUE

SHEET PILE
INSTALLATION
PROCEDURES

VINYL SHEET PILE
CATALOGUE

VINYL SHEET PILE
INSTALLATION GUIDE

STEEL STRUCTURES
CAPABILITIES

MOORING BOLLARDS
CATALOGUE

MARINE FENDERS
CATALOGUE

PORTS & OFFSHORE
STRUCTURES

ESC PROJECT CASE
STUDIES

COMBINATION WALL
PROJECTS

STEEL PIPE PILING
PROJECTS



ESC TRENCH SHORING, INC.

18805 W CATAWBA AVE, SUITE #207,
CORNELIUS, 28031, NC, USA

Charlotte Office - (Headquarters)

E don@estrenchshoring.com
T +1 (980) 892 2486

E andrew@estrenchshoring.com
T +1 (860) 965 3270

E brucecolson@estrenchshoring.com
T +1 (704) 654 0321

US Sales & Distribution Yard

A 2185 Salisbury Highway
Statesville, North Carolina, 28677, USA

Manufacturing Locations

Abu Dhabi, UAE
New Jersey, USA
Ohio, USA
Irapuato, Mexico

Canada Office

E don@estrenchshoring.com
T +1 (902) 442 0800

Colombia Office

Km 10 Via a Tubara, Parque Industrial Zilog,
Bodecal 4 Galapa Atlántico
Barranquillo, Colombia

Para solicitudes en español, por favor contactar a

E samuel@estrenchshoring.com
T +1(401) 206 8727

WWW.ESC TRENCHSHORING.COM



Download the "ESC Group" App